

## Product datasheet for **RC204252**

### CD27 (NM\_001242) Human Tagged ORF Clone

#### Product data:

Product Type:	Expression Plasmids
Product Name:	CD27 (NM_001242) Human Tagged ORF Clone
Tag:	Myc-DDK
Symbol:	CD27
Synonyms:	S152; S152. LPFS2; T14; TNFRSF7; Tp55
Mammalian Cell Selection:	Neomycin
Vector:	pCMV6-Entry (PS100001)
E. coli Selection:	Kanamycin (25 ug/mL)
ORF Nucleotide Sequence:	>RC204252 ORF sequence Red=Cloning site Blue=ORF Green=Tags(s)

TTTGTAAATACGACTCACTATAGGGCGGCCGGAATTCGTCGACTGGATCCGGTACCGAGGAGATCTGCC  
 GCC**CGATCGCC**

ATGGCACGGCCACATCCCTGGTGGCTGTGCGTTCTGGGACCCTGGTGGGGCTCTCAGCTACTCCAGCCC  
 CCAAGAGCTGCCCAGAGAGGCACTACTGGGCTCAGGGAAAGCTGTGCTGCCAGATGTGTAGCCAGGAAC  
 ATTCCTCGTGAAGGACTGTGACCAGCATAGAAAGGCTGCTCAGTGTGATCCTTGCATACCGGGGTCTCC  
 TTCTCTCCTGACCACCACACCCGGCCCCACTGTGAGAGCTGTGGCACTGTAACCTCTGGTCTTCTCGTTC  
 GCAACTGCACCATCACTGCCAATGCTGAGTGTGCCTGTGCAATGGCTGGCAGTGCAGGGACAAGGAGTG  
 CACCGAGTGTGATCCTCTTCAAACCTTCGCTGACCGCTCGGTCTCAGGCCCTGAGCCACACCCCT  
 CAGCCCACTTACCTTATGTGAGTGTGAGTGTGAGGCGCAGGACAGCTGGGCACATGCAGACTCTGG  
 CTGACTTCAGGCAGCTGCCTGCCCGGACTCTCTACCCACTGGCCACCCCAAAGATCCCTGTGCAGCTC  
 CGATTTTATTGCGATCCTTGTGATCTTCTCTGGAATGTTCTTGTTCACCCCTGGCCGGGGCCCTGTTC  
 CTCCATCAACGAAGGAAATATAGATCAAACAAAGGAGAAAGTCTGTGGAGCCTGCAGAGCCTTGTCTGT  
 ACAGCTGCCCCAGGGAGGAGGAGGCGAGCACCATCCCATCCAGGAGGATTACCGAAAACCGGAGCCTGC  
 CTGCTCCCC

**ACGCGT**ACGCGGCGCTCGAGCAGAACTCATCTCAGAAGAGGATCTGGCAGCAAATGATATCTGGATT  
 ACAAGGATGACGACGATAAGGTTTAA


[View online »](#)

**Protein Sequence:** >RC204252 protein sequence  
 Red=Cloning site Green=Tags(s)

MARPHPWWLCVLGTLVGLSATPAKSCPERHYWAQGKLCCQMCEPGTFLVKDCDQHRKAAQCDPCIPGVS  
 FSPDHHTRPHCESCRHCNSGLLVRNCTITANAECACRNGWQCRDKECTCDPLNPPLTARSSQALSPHP  
 QPHTLPYVSEMLEARTAGHMQLADFRQLPARTLSTHWPPQRLCSDSDFIRILVIFSGMFLVFTLAGALF  
 LHQRRKYRSNKGESPVPAEPCRYSCPREEEGSTIPIQEDYRKPEPACSP

TRTRPLEQKLISEEDLAANDILDYKDDDDKV

**Chromatograms:** [https://cdn.origene.com/chromatograms/mk6059\\_f06.zip](https://cdn.origene.com/chromatograms/mk6059_f06.zip)

**Restriction Sites:** SgfI-MluI

**Cloning Scheme:**



**ACCN:** NM\_001242

**ORF Size:** 780 bp

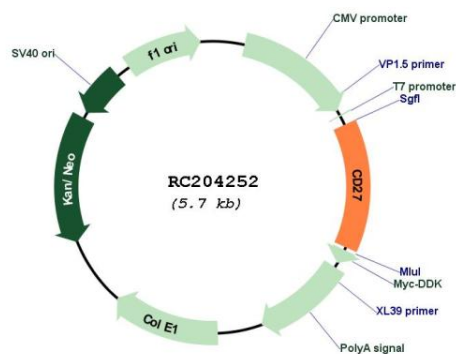
**OTI Disclaimer:** Due to the inherent nature of this plasmid, standard methods to replicate additional amounts of DNA in E. coli are highly likely to result in mutations and/or rearrangements. Therefore, OriGene does not guarantee the capability to replicate this plasmid DNA. Additional amounts of DNA can be purchased from OriGene with batch-specific, full-sequence verification at a reduced cost. Please contact our customer care team at [custsupport@origene.com](mailto:custsupport@origene.com) or by calling 301.340.3188 option 3 for pricing and delivery.

The molecular sequence of this clone aligns with the gene accession number as a point of reference only. However, individual transcript sequences of the same gene can differ through naturally occurring variations (e.g. polymorphisms), each with its own valid existence. This clone is substantially in agreement with the reference, but a complete review of all prevailing variants is recommended prior to use. [More info](#)

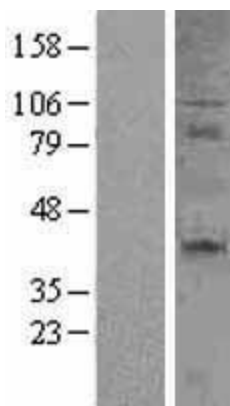
**OTI Annotation:** This clone was engineered to express the complete ORF with an expression tag. Expression varies depending on the nature of the gene.

<b>Components:</b>	The ORF clone is ion-exchange column purified and shipped in a 2D barcoded Matrix tube containing 10ug of transfection-ready, dried plasmid DNA (reconstitute with 100 ul of water).
<b>Reconstitution Method:</b>	<ol style="list-style-type: none"> <li>1. Centrifuge at 5,000xg for 5min.</li> <li>2. Carefully open the tube and add 100ul of sterile water to dissolve the DNA.</li> <li>3. Close the tube and incubate for 10 minutes at room temperature.</li> <li>4. Briefly vortex the tube and then do a quick spin (less than 5000xg) to concentrate the liquid at the bottom.</li> <li>5. Store the suspended plasmid at -20°C. The DNA is stable for at least one year from date of shipping when stored at -20°C.</li> </ol>
<b>Note:</b>	Plasmids are not sterile. For experiments where strict sterility is required, filtration with 0.22um filter is required.
<b>RefSeq:</b>	<a href="#">NM_001242.4</a>
<b>RefSeq Size:</b>	1320 bp
<b>RefSeq ORF:</b>	783 bp
<b>Locus ID:</b>	939
<b>UniProt ID:</b>	<a href="#">P26842</a>
<b>Cytogenetics:</b>	12p13.31
<b>Protein Families:</b>	Druggable Genome, Transmembrane
<b>Protein Pathways:</b>	Cytokine-cytokine receptor interaction
<b>MW:</b>	29.2 kDa
<b>Gene Summary:</b>	The protein encoded by this gene is a member of the TNF-receptor superfamily. This receptor is required for generation and long-term maintenance of T cell immunity. It binds to ligand CD70, and plays a key role in regulating B-cell activation and immunoglobulin synthesis. This receptor transduces signals that lead to the activation of NF-kappaB and MAPK8/JNK. Adaptor proteins TRAF2 and TRAF5 have been shown to mediate the signaling process of this receptor. CD27-binding protein (SIVA), a proapoptotic protein, can bind to this receptor and is thought to play an important role in the apoptosis induced by this receptor. [provided by RefSeq, Jul 2008]

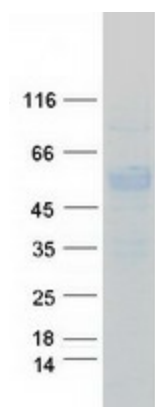
## Product images:



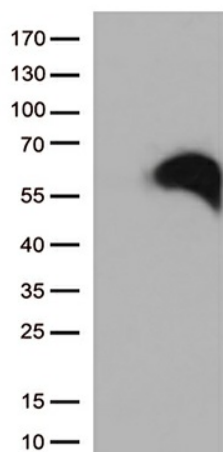
Circular map for RC204252



Western blot validation of overexpression lysate (Cat# [LY400496]) using anti-DDK antibody (Cat# [TA50011-100]). Left: Cell lysates from untransfected HEK293T cells; Right: Cell lysates from HEK293T cells transfected with RC204252 using transfection reagent MegaTran 2.0 (Cat# [TT210002]).



Coomassie blue staining of purified CD27 protein (Cat# [TP304252]). The protein was produced from HEK293T cells transfected with CD27 cDNA clone (Cat# RC204252) using MegaTran 2.0 (Cat# [TT210002]).



HEK293T cells were transfected with the pCMV6-ENTRY control (Cat# [PS100001], Left lane) or pCMV6-ENTRY CD27 (Cat# RC204252, Right lane) cDNA for 48 hrs and lysed. Equivalent amounts of cell lysates (5 ug per lane) were separated by SDS-PAGE and immunoblotted with anti-CD27 (Cat# [TA812556])(1:500).