

Product datasheet for **RC204244**

SEPTIN6 (NM_145802) Human Tagged ORF Clone

Product data:

Product Type:	Expression Plasmids
Product Name:	SEPTIN6 (NM_145802) Human Tagged ORF Clone
Tag:	Myc-DDK
Symbol:	SEPTIN6
Synonyms:	SEP2; SEPT2; SEPT6
Mammalian Cell Selection:	Neomycin
Vector:	pCMV6-Entry (PS100001)
E. coli Selection:	Kanamycin (25 ug/mL)



[View online »](#)

ORF Nucleotide
Sequence:

>RC204244 ORF sequence
Red=Cloning site Blue=ORF Green=Tags(s)

TTTTGTAATACGACTCACTATAGGGCGGCCGGGAATTCGTCGACTGGATCCGGTACCGAGGAGATCTGCC
GCCCGCATCGCC

ATGGCAGCGACCGATATAGCTCGCCAGGTGGTGAAGTTGCCGAACGTCCCCCTGGCTGGACATGTGG
GGTTTGACAGCTTGCTGACCAGCTGGTGAATAAGTCCGTCAGCCAGGGCTTCTGCTTCAACATCCTGTG
CGTGGGAGAGACAGTGGGCAAGTCCACCCTCATGGACACCCTGTTCAACACCAAATTCGAAGGGGAG
CCAGCCACCCACACAGCCGGGTGCCAGCTCCAGTCTAATACCTATGACCTCCAAGAGAGCAACGTGA
GGCTAAAGCTCACGATCGTTAGCACAGTTGGCTTTGGGGACCAGATCAACAAAGAGGACAGCTACAAGCC
TATCGTGAATTCATCGATGCACAATTCGAGGCCACCTGCAGGAAGAGCTAAAGATCCGAAGAGTGCTA
CACACCTACCATGACTCCCGAATCCATGTCTGCTTGTATTTTCATTGCCCCACGGGTCATTCCCTGAAGT
CTCTGGACCTAGTACTATGAAGAAGCTGGACAGTAAGGTGAACATCATCCCATCATTGCCAAAGCAGA
TGCCATTTTGAAGAGTGAGCTAACAAAGTTCAAATCAAATCACCAGCGAGCTTGTGAGCAACGGAGTC
CAGATCTATCAGTTTCTACAGATGATGAGTCGGTGGCAGAGATCAATGGAACCATGAACGCCACCTGC
CGTTTGCTGTCTATTGGCAGCACAGAAGAACTGAAGATAGGCAACAAGATGATGAGGGCGCGGAGTATCC
TTGGGGCACTGTGCGAGTTGAAAACGAGGCCCACTGCGACTTTGTGAAGCTGCGGGAGATGCTGATTCCG
GTCAACATGGAGGATCTGCGGGAGCAGACCCACACCCGGCACTATGAGCTGTATCGCCGCTGAAGCTGG
AGGAGATGGGCTTCAAGGACACCCGACCTGACAGCAAACCTTCAGTTTACAGGAGACATATGAGGCCAA
AAGGAACGAGTTCTAGGGAACTCCAGAAAAAGAAGAGGAGATGAGACAGATGTTTCGTCACGCGAGTC
AAAGAGAAAGAAGCGGAGCTCAAAGAGGCAGAGAAAGAGCTGCACGAGAAGTTTGACCGTCTGAAGAAAC
TGCACCGAGCAGAGAAGAAGAACTGGAGGATAAGAAGAAATCCCTGGATGATGAAGTGAATGCTTTCAA
GCAAAGAAAGACGGCGGCTGAGCTCCAGTCCAGGGCTCCAGGCTGGAGGCTCACAGACTCTGAAG
AGAGACAAAGAGAAGAAAACTTTTTT

ACGCGTACGCGGCCGCTCGAGCAGAACTCATCTCAGAAGAGGATCTGGCAGCAATGATATCCTGGATT
ACAAGGATGACGACGATAAGGTTTAA

Protein Sequence:

>RC204244 protein sequence
Red=Cloning site Green=Tags(s)

MAATDIARQVGEGRVPLAGHVGFDLSDLPDQVNVSVSQGFCFNILCVGETGLGKSTLMDTLFNTKFEGE
PATHTQPGVQLQSNTYDLQESNVRLLKTIIVSTVGFQDQINKEDSYKPIVEFIDAQFEAYLQEELKIRRVL
HTYHDSRIHVCLYFIAPTGHSLKSLDLVTMKKLDSKVNIIPIIAKADAIKSELTKFKIKITSELVSNV
QIYQFPTDDESVAEINGTMNAHLPFVAVIGSTEELKIGNKMMRARQYPWGTVOVENEAHCDFVKLREMLIR
VNMEDLREQTHRHYELYRRCKLEEMGFKDTDPDSKPSLQETYEAKRNEFLGELQKKEEMRQMFVQRV
KEKEAELKEAEKELHEKFDRLKHLHQDEKKKLEDKKSLDDEVNAFKQRKTAELLQSQGSQAGGSQTLK
RDKEKKNFF

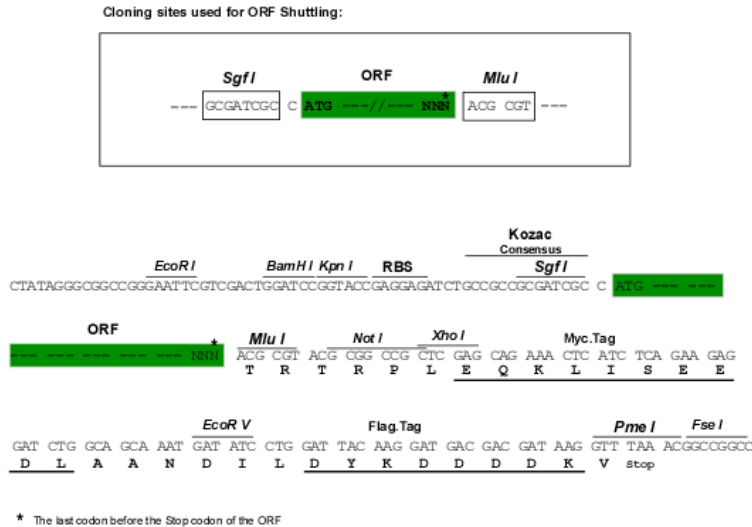
TRTRPLEQKLISEEDLAANDILDYKDDDDKV

Chromatograms:

https://cdn.origene.com/chromatograms/mk6673_d06.zip

Restriction Sites:

SgfI-MluI

Cloning Scheme:


ACCN: NM_145802

ORF Size: 1287 bp

OTI Disclaimer: The molecular sequence of this clone aligns with the gene accession number as a point of reference only. However, individual transcript sequences of the same gene can differ through naturally occurring variations (e.g. polymorphisms), each with its own valid existence. This clone is substantially in agreement with the reference, but a complete review of all prevailing variants is recommended prior to use. [More info](#)

OTI Annotation: This clone was engineered to express the complete ORF with an expression tag. Expression varies depending on the nature of the gene.

Components: The ORF clone is ion-exchange column purified and shipped in a 2D barcoded Matrix tube containing 10ug of transfection-ready, dried plasmid DNA (reconstitute with 100 ul of water).

Reconstitution Method:

1. Centrifuge at 5,000xg for 5min.
2. Carefully open the tube and add 100ul of sterile water to dissolve the DNA.
3. Close the tube and incubate for 10 minutes at room temperature.
4. Briefly vortex the tube and then do a quick spin (less than 5000xg) to concentrate the liquid at the bottom.
5. Store the suspended plasmid at -20°C. The DNA is stable for at least one year from date of shipping when stored at -20°C.

RefSeq: [NM_145802.4](#)

RefSeq Size: 2564 bp

RefSeq ORF: 1290 bp

Locus ID: 23157

UniProt ID: [Q14141](#)

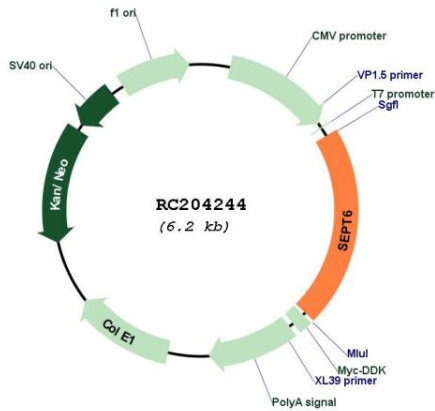
Cytogenetics: Xq24

Domains: GTP_CDC

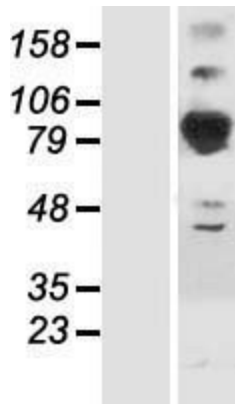
MW: 49.2 kDa

Gene Summary: This gene is a member of the septin family of GTPases. Members of this family are required for cytokinesis. One version of pediatric acute myeloid leukemia is the result of a reciprocal translocation between chromosomes 11 and X, with the breakpoint associated with the genes encoding the mixed-lineage leukemia and septin 2 proteins. This gene encodes four transcript variants encoding three distinct isoforms. An additional transcript variant has been identified, but its biological validity has not been determined. [provided by RefSeq, Jul 2008]

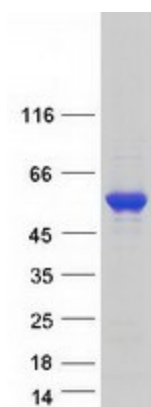
Product images:



Circular map for RC204244



Western blot validation of overexpression lysate (Cat# [LY407885]) using anti-DDK antibody (Cat# [TA50011-100]). Left: Cell lysates from untransfected HEK293T cells; Right: Cell lysates from HEK293T cells transfected with RC204244 using transfection reagent MegaTran 2.0 (Cat# [TT210002]).



Coomassie blue staining of purified SEPTIN6 protein (Cat# [TP304244]). The protein was produced from HEK293T cells transfected with SEPTIN6 cDNA clone (Cat# RC204244) using MegaTran 2.0 (Cat# [TT210002]).