

Product datasheet for **RC204243L4V**

Tcl1 (TCL1A) (NM_021966) Human Tagged ORF Clone Lentiviral Particle

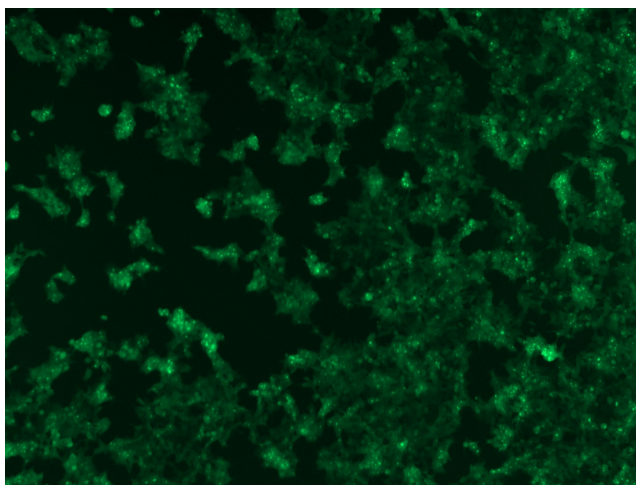
Product data:

Product Type:	Lentiviral Particles
Product Name:	Tcl1 (TCL1A) (NM_021966) Human Tagged ORF Clone Lentiviral Particle
Symbol:	Tcl1
Synonyms:	TCL1
Mammalian Cell Selection:	Puromycin
Vector:	pLenti-C-mGFP-P2A-Puro (PS100093)
Tag:	mGFP
ACCN:	NM_021966
ORF Size:	342 bp
ORF Nucleotide Sequence:	The ORF insert of this clone is exactly the same as(RC204243).
OTI Disclaimer:	The molecular sequence of this clone aligns with the gene accession number as a point of reference only. However, individual transcript sequences of the same gene can differ through naturally occurring variations (e.g. polymorphisms), each with its own valid existence. This clone is substantially in agreement with the reference, but a complete review of all prevailing variants is recommended prior to use. More info
OTI Annotation:	This clone was engineered to express the complete ORF with an expression tag. Expression varies depending on the nature of the gene.
RefSeq:	NM_021966.1
RefSeq Size:	1410 bp
RefSeq ORF:	345 bp
Locus ID:	8115
UniProt ID:	P56279
Cytogenetics:	14q32.13
Protein Families:	Druggable Genome
MW:	13.5 kDa


[View online »](#)

Gene Summary:

Overexpression of the TCL1 gene in humans has been implicated in the development of mature T cell leukemia, in which chromosomal rearrangements bring the TCL1 gene in close proximity to the T-cell antigen receptor (TCR)-alpha (MIM 186880) or TCR-beta (MIM 186930) regulatory elements (summarized by Virgilio et al., 1998 [PubMed 9520462]). In normal T cells TCL1 is expressed in CD4-/CD8- cells, but not in cells at later stages of differentiation. TCL1 functions as a coactivator of the cell survival kinase AKT (MIM 164730) (Laine et al., 2000 [PubMed 10983986]).[supplied by OMIM, Jul 2010]

Product images:


[RC204243L4] was used to prepare Lentiviral particles using [TR30037] packaging kit. HEK293T cells were transduced with RC204243L4V particle to overexpress human TCL1A-mGFP fusion protein.