

## Product datasheet for **RC204243**

### Tcl1 (TCL1A) (NM\_021966) Human Tagged ORF Clone

#### Product data:

**Product Type:** Expression Plasmids  
**Product Name:** Tcl1 (TCL1A) (NM\_021966) Human Tagged ORF Clone  
**Tag:** Myc-DDK  
**Symbol:** Tcl1  
**Synonyms:** TCL1  
**Mammalian Cell Selection:** Neomycin  
**Vector:** pCMV6-Entry (PS100001)  
**E. coli Selection:** Kanamycin (25 ug/mL)  
**ORF Nucleotide Sequence:** >RC204243 ORF sequence  
Red=Cloning site Blue=ORF Green=Tags(s)

TTTTGTAATACGACTCACTATAGGGCGGCCGGAATTCGTCGACTGGATCCGGTACCGAGGAGATCTGCC  
GCC**CGATCGCC**

ATGGCCGAGTGCCCGACACTCGGGGAGGCAGTCACCGACCACCCGGACCGCCTGTGGCCTGGGAGAAGT  
TCGTGTATTTGGACGAGAAGCAGCACGCCTGGCTGCCCTTAACCATCGAGATAAAGGATAGGTTACAGTT  
ACGGGTGCTCTTGCCTCGGAAGACGTCGCTCTGGGGAGGCCTATGACCCCAACCCAGATAGGCCAAGC  
CTGCTGCCTATCATGTGGCAGCTCTACCCTGATGGACGATACCGATCCTCAGACTCCAGTTCTGGCGCT  
TAGTGACCACATCAAGATTGACGGCGTGGAGGACATGCTTCTCGAGCTGCTGCCAGATGAC

**ACGCGT**ACGCGGCCGCTCGAGCAGAAACTCATCTCAGAAGAGGATCTGGCAGCAAATGATATCCTGGATT  
ACAAGGATGACGACGATAAGGTTTAA

**Protein Sequence:** >RC204243 protein sequence  
Red=Cloning site Green=Tags(s)  
MAECPTLGEAVTDHPDRLWAWKEFVYLDEKQHAWLPLTIEIKDRLQLRVLLRREDVVLGRPMTPTQIGPS  
LLPIMWQLYPDGRYRSDSSFWRLVYHIKIDGVEDMLLELLPDD

**TR**TRPLEQKLISEEDLAANDILDYKDDDDKV

**Chromatograms:** [https://cdn.origene.com/chromatograms/mk6555\\_c10.zip](https://cdn.origene.com/chromatograms/mk6555_c10.zip)

**Restriction Sites:** SgfI-MluI



[View online »](#)

**Cloning Scheme:**


**ACCN:** NM\_021966

**ORF Size:** 342 bp

**OTI Disclaimer:** The molecular sequence of this clone aligns with the gene accession number as a point of reference only. However, individual transcript sequences of the same gene can differ through naturally occurring variations (e.g. polymorphisms), each with its own valid existence. This clone is substantially in agreement with the reference, but a complete review of all prevailing variants is recommended prior to use. [More info](#)

**OTI Annotation:** This clone was engineered to express the complete ORF with an expression tag. Expression varies depending on the nature of the gene.

**Components:** The ORF clone is ion-exchange column purified and shipped in a 2D barcoded Matrix tube containing 10ug of transfection-ready, dried plasmid DNA (reconstitute with 100 ul of water).

- Reconstitution Method:**
1. Centrifuge at 5,000xg for 5min.
  2. Carefully open the tube and add 100ul of sterile water to dissolve the DNA.
  3. Close the tube and incubate for 10 minutes at room temperature.
  4. Briefly vortex the tube and then do a quick spin (less than 5000xg) to concentrate the liquid at the bottom.
  5. Store the suspended plasmid at -20°C. The DNA is stable for at least one year from date of shipping when stored at -20°C.

**RefSeq:** [NM\\_021966.3](#)

**RefSeq Size:** 1410 bp

**RefSeq ORF:** 345 bp

**Locus ID:** 8115

UniProt ID: [P56279](#)

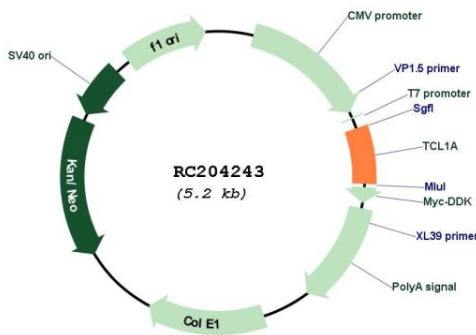
Cytogenetics: 14q32.13

Protein Families: Druggable Genome

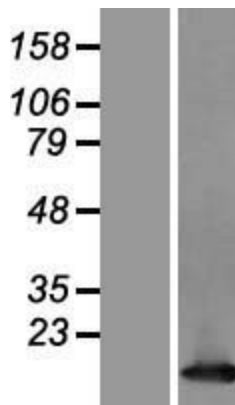
MW: 13.5 kDa

**Gene Summary:** Overexpression of the TCL1 gene in humans has been implicated in the development of mature T cell leukemia, in which chromosomal rearrangements bring the TCL1 gene in close proximity to the T-cell antigen receptor (TCR)-alpha (MIM 186880) or TCR-beta (MIM 186930) regulatory elements (summarized by Virgilio et al., 1998 [PubMed 9520462]). In normal T cells TCL1 is expressed in CD4-/CD8- cells, but not in cells at later stages of differentiation. TCL1 functions as a coactivator of the cell survival kinase AKT (MIM 164730) (Laine et al., 2000 [PubMed 10983986]).[supplied by OMIM, Jul 2010]

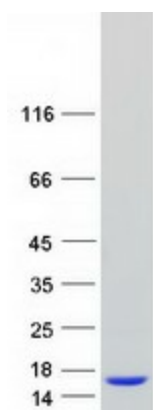
**Product images:**



Circular map for RC204243



Western blot validation of overexpression lysate (Cat# [LY420669]) using anti-DDK antibody (Cat# [TA50011-100]). Left: Cell lysates from untransfected HEK293T cells; Right: Cell lysates from HEK293T cells transfected with [RC213051] using transfection reagent MegaTran 2.0 (Cat# [TT210002]).



Coomassie blue staining of purified TCL1A protein (Cat# [TP304243]). The protein was produced from HEK293T cells transfected with TCL1A cDNA clone (Cat# RC204243) using MegaTran 2.0 (Cat# [TT210002]).