

Product datasheet for **RC204237**

DPP2 (DPP7) (NM_013379) Human Tagged ORF Clone

Product data:

Product Type:	Expression Plasmids
Product Name:	DPP2 (DPP7) (NM_013379) Human Tagged ORF Clone
Tag:	Myc-DDK
Symbol:	DPP2
Synonyms:	DPP2; DPPII; QPP
Mammalian Cell Selection:	Neomycin
Vector:	pCMV6-Entry (PS100001)
E. coli Selection:	Kanamycin (25 ug/mL)



[View online »](#)

ORF Nucleotide Sequence:

>RC204237 ORF sequence
 Red=Cloning site Blue=ORF Green=Tags(s)

TTTTGTAATACGACTCACTATAGGGCGGCCGGAATTCGTCGACTGGATCCGGTACCGAGGAGATCTGCC
 GCC**GCGATCGCC**

ATGGGCTCCGCTCCCTGGCCCCGGTCTGCTGCTGGCGCTCGGGCTGCGCGCCTCCAGCGGGGGCC
 GCAGGGCCCCGGACCCCGCTTCCAGGAGCGCTTCTTCCAGCAGCGTCTGGACCCTTCAACTTCGAGCG
 CTTCCGGCAACAAGACCTTCCCCAGCGCTTCTGGTGTCCGACAGGTTCTGGGTCCGGGGCGAGGGGCC
 ATCTTCTTCTACTGGAACGAGGGCGACGTGTGGCCTTCGCCAAACTCGGGCTTCGTCGCGGAGC
 TGGCGGCCGAGCGGGGGCTCTACTGGTCTTCGCGGAGCACCGCTACTACGGGAAGTCGCTGCCGTTCCG
 TGCGCAGTCCACGACGCGGGCACACGGAGTGTGACGGTGGAGCAGGCCCTGGCCGACTTCGCAGAG
 CTGCTCCGCGCTACGACGCGACCTCGGGGCCAGGATGCCCCGCCATCGCTTCGGTGAAGTTATG
 GGGGATGCTCAGTGCCTACCTGAGGATGAAGTATCCCCACCTGGTGGCGGGGGCGTGGCGCCAGCGC
 GCCGTTCTAGCTGTGGCAGGCCTCGGCGACTCCAACCAGTCTTCCGGGACGTACGGCGGACTTTGAG
 GGCAGAGTCCCAAATGCACCCAGGGTGTGCGGGAAGCGTTCGACAGATCAAGGACTTGTCTACAGG
 GAGCCTACGACACGGTCCGCTGGGAGTTCGGCACCTGCCAGCCGCTGTCAGACGAGAAGGACCTGACCCA
 GCTCTTATGTTCCGCCGAATGCCTTACCGTGTGGCCATGATGGACTACCCCTACCCCACTGACTTC
 CTGGGTCCCTCCCTGCCAACCCGTCGAAGTGGGCTGTGATCGGCTGCTGAGTGAGGCCAGAGGATCA
 CGGGGCTGCGAGCACTGGCAGGGCTGGTCTACAACGCCTCGGGCTCCGAGCACTGCTACGACATCTACCG
 GCTTACCACAGTGTGCTGACCCACTGGTGGCGCACCGGCCCGACGCCAGGGCCTGGGACTACCAG
 GCCTGCACCGAGATCAACTGACCTTCGCCAGCAACAATGTGACCGATATGTTCCCGACCTGCCCTTCA
 CTGACAGCTCCGCCAGCGGTACTGCCTGGACACCTGGGGCGTGTGGCCCCGGCCGACTGGCTGCTGAC
 CAGCTTCTGGGGGGTGATCTCAGAGCCGCCAGCAACATCATCTTCTCCAACGGGAACCTGGACCCCTGG
 GCAGGGGGCGGGATTTCGAGGAACCTGAGTGCCTCAGTCATCGCCGTACCCATCCAGGGGGAGCGCAC
 ACCTCGACCTCAGAGCCTCCACCCAGAAGATCTGCTCCGTGGTTGAGGCGCGGAAGCTGGAGGCCAC
 CATCATCGCGAGTGGTAAAGGCAGCCAGGCGTGAGCAGCAGCCAGCTCTGCGTGGGGGCCAGACTC
 AGCCTC

ACGCGTACGCGGCCGCTCGAGCAGAACTCATCTCAGAAGAGGATCTGGCAGCAAATGATATCTGGATT
 ACAAGGATGACGACGATAAGGTTTAA

Protein Sequence:

>RC204237 protein sequence
 Red=Cloning site Green=Tags(s)

MGSAPWAPVLLLLALGLRGLQAGARRAPDPGFQERFFQQLDHFNFERFNGKTFPQRFLVSDRFVVRGEGP
 IFFYTGNEGDVWAFANNSGFVAELAAERGALLVFAEHRYYGKSLPFGAQSTQRGHTTELLTVEQALADFAE
 LLRALRRDLGAQDAPAIAFGGSYGGMLSAYLRMKYPHLVAGALAAAPVLAAGLSDSNQFFRDVTADE
 GQSPKCTQGVREAFRQIKDLFLQGAYDVRWFGTCQPLSDEKDLTQLFMFARNAFTVLAMMDYPYPTDF
 LGPLPANPVKVGCDRLLEAQRITGLRALAGLVYNASGSEHCYDIYRLYHSCADPTGCGTGPDARAWDYQ
 ACTEINLTFASNNVDMFPDLPTDELQRQYCLDTGWVWPRPDWLLTSFWGGDLRAASNIIFSNGLDPW
 AGGGIRRNLASVIAVTIQGGAHHLDLRASHPEDPASVVEARKLEATIIGEWVKAARREQPALRGGPRL
 SL

TRTRPLEQKLISEEDLAANDILDYKDDDDKV

Chromatograms:

https://cdn.origene.com/chromatograms/mk6174_g11.zip

Restriction Sites:

Sgfl-Mlul

Cloning Scheme:



ACCN: NM_013379

ORF Size: 1476 bp

OTI Disclaimer: The molecular sequence of this clone aligns with the gene accession number as a point of reference only. However, individual transcript sequences of the same gene can differ through naturally occurring variations (e.g. polymorphisms), each with its own valid existence. This clone is substantially in agreement with the reference, but a complete review of all prevailing variants is recommended prior to use. [More info](#)

OTI Annotation: This clone was engineered to express the complete ORF with an expression tag. Expression varies depending on the nature of the gene.

Components: The ORF clone is ion-exchange column purified and shipped in a 2D barcoded Matrix tube containing 10ug of transfection-ready, dried plasmid DNA (reconstitute with 100 ul of water).

- Reconstitution Method:
1. Centrifuge at 5,000xg for 5min.
 2. Carefully open the tube and add 100ul of sterile water to dissolve the DNA.
 3. Close the tube and incubate for 10 minutes at room temperature.
 4. Briefly vortex the tube and then do a quick spin (less than 5000xg) to concentrate the liquid at the bottom.
 5. Store the suspended plasmid at -20°C. The DNA is stable for at least one year from date of shipping when stored at -20°C.

RefSeq: [NM_013379.3](#)

RefSeq Size: 1633 bp

RefSeq ORF: 1479 bp

Locus ID: 29952

UniProt ID: [Q9UHL4](#)

Cytogenetics: 9q34.3

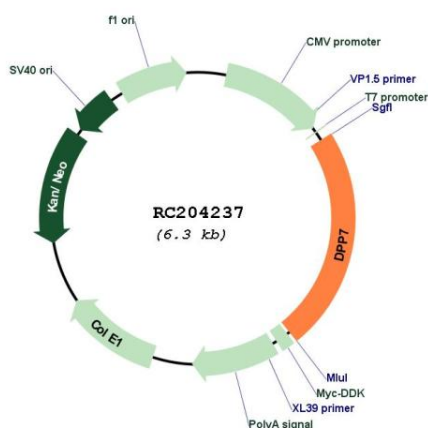
Domains: abhydrolase

Protein Families: Protease

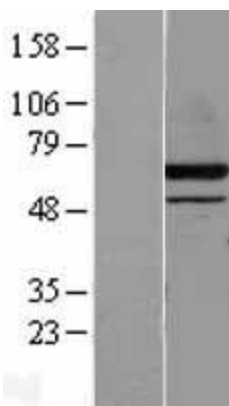
MW: 54.3 kDa

Gene Summary: The protein encoded by this gene is a post-proline cleaving aminopeptidase expressed in quiescent lymphocytes. The resting lymphocytes are maintained through suppression of apoptosis, a state which is disrupted by inhibition of this novel serine protease. The enzyme has strong sequence homology with prolylcarboxypeptidase and is active at both acidic and neutral pH. [provided by RefSeq, Jul 2008]

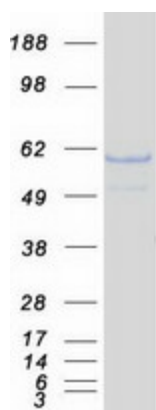
Product images:



Circular map for RC204237



Western blot validation of overexpression lysate (Cat# [LY402258]) using anti-DDK antibody (Cat# [TA50011-100]). Left: Cell lysates from untransfected HEK293T cells; Right: Cell lysates from HEK293T cells transfected with RC204237 using transfection reagent MegaTran 2.0 (Cat# [TT210002]).



Coomassie blue staining of purified DPP7 protein (Cat# [TP304237]). The protein was produced from HEK293T cells transfected with DPP7 cDNA clone (Cat# RC204237) using MegaTran 2.0 (Cat# [TT210002]).