

Product datasheet for **RC204228**

SPOCK3 (NM_001040159) Human Tagged ORF Clone

Product data:

Product Type:	Expression Plasmids
Product Name:	SPOCK3 (NM_001040159) Human Tagged ORF Clone
Tag:	Myc-DDK
Symbol:	SPOCK3
Synonyms:	HSAJ1454; TES-3; TICN3
Mammalian Cell Selection:	Neomycin
Vector:	pCMV6-Entry (PS100001)
E. coli Selection:	Kanamycin (25 ug/mL)



[View online »](#)

ORF Nucleotide Sequence:

>RC204228 ORF sequence
 Red=Cloning site Blue=ORF Green=Tags(s)

TTTTGTAATACGACTCACTATAGGGCGGCCGGGAATTCGTCGACTGGATCCGGTACCGAGGAGATCTGCC
 GCC**CGCATCGCC**

ATGCTCAAGGTGTCAGCCGACTGTGTGTGTGTGCAGCCGCTTGGTGCAGTCAGTCTCTCGCAGCTGCCG
 CGGCGGTGGCTGCAGCCGGGGCGGTTCGACCGCGTAATTTCTGGATGATAAACAATGGCTCACCCAC
 AATCTCCCAAGTATGACAAGGAAGTCGGACAGTGGAAACAATTCGAGACGATGATTATTTCCGCACTTGG
 AGTCCAGGAAAACCCCTTCGATCAGGCTTTAGATCCAGCTAAGGATCCATGCTTAAAGATGAAATGTAGTC
 GCCATAAAGTATGCATTGCTCAAGATTCTCAGACTGCAGTCTGCATTAGTCACCGGAGGCTTACACACAG
 GATGAAAGAAGCAGGAGTAGACCATAGGCAGTGGAGGGTCCCATTATCCACCTGCAAGCAGTGCCCA
 GTGGTCTATCCCAGCCCTGTTTGTGGTTCAGATGGTCATACCTACTCTTTTCAGTGCAAAGTGAATATC
 AGGCATGTGCTTAGGAAAACAGATCTCAGTCAAATGTGAAGGACATTGCCCATGCTTTCAGATAAGCC
 CACCGATACAAGCAGAAATGTTAAGAGAGCATGCAGTGCCTGGAGTTCAGGGAAGTGGCAAACAGATTG
 CGGGACTGGTTCAAGGCCCTTCATGAAAGTGGAAGTCAAAACAAGAAGACAAAAACATTGCTGAGGCCTG
 AGAGAAGCAGATTCGATACCAGCATCTTGCCAATTTGCAAGGACTCACTTGGCTGGATGTTTAAACAGACT
 TGATACAAACTATGACCTGCTATTGGACCAGTCAGAGCTCAGAAGCATTTACCTTGATAAGAATGAACAG
 TGTACCAAGGCATTCTTCAATTCTGTGACACATACAAGGACAGTTAATATCTAATAATGAGTGGTGTCT
 ACTGCTTCCAGAGACAGCAAGACCCACCTTGCAGACTGAGCTCAGCAATATTCAGAAGCGGCAAGGGGT
 AAAGAAGTCTTAGGACAGTATATCCCCTGTGTGATGAAGATGGTTACTACAAGCCAACACAATGTCAT
 GGCAGTGTGGACAGTGTGGTGTGTGACAGATATGAAATGAAGTATGGGATCCAGAATAAATGGTG
 TTGCAGATTGTGCTATAGATTTTGGATCTCCGGAGATTTTGTAGTGGCGATTTTCATGAATGGACTGA
 TGATGAGGATGATGAAGACGATATTATGAATGATGAAGATGAAATGAAGATGATGATGAAGATGAAGGG
 GATGATGATGATGGTGGTGTGACCATGATGTATACATT

ACGCGTACGCGGCCGCTCGAGCAGAAACTCATCTCAGAAGAGGATCTGGCAGCAAATGATATCCTGGATT
 ACAAGGATGACGACGATAAGGTTTAA

Protein Sequence:

>RC204228 protein sequence
 Red=Cloning site Green=Tags(s)

MLKVSAVLCVCAAAWCSQSLAAAAVAAGGRSDGGNFLDDKQWLTTISQYDKEVGQWNKFRDDDYFRTW
 SPGKPFQDALDPAKDPCLKMKCSRHKVCI AQDSQTAVCISHRRL THRMKEAGVDHRQWRGPILSTCKQCP
 VVYVSPVCGSDGHTYSFQCKLEYQACVLGKQISVKCEGHCPSPDKPTSTSRNVKRACSDLEFREVANRL
 RDWFKALHESGSQNKKTLLRPERSRFDTSILPICKDSL GWMFNRLDTNYDLLLDQSELRSIYLDKNEQ
 CTKAFFNSCDTYKDSLISNNEWYCFQRQQDPPCQTELSNIQKRQGVKLLGQYIPLCDEDGYKPTQCH
 GSVGQCWCVDYRGNVEMGSRINGVADCAIDFEISGDFASGDFHEWTDDEDEDDIMNDEDEIEDDEDEDEG
 DDDGGDDHDVYI

TRTRPLEQKLISEEDLAANDILDYKDDDDKV

Chromatograms:

https://cdn.origene.com/chromatograms/mk6568_a06.zip

Restriction Sites:

Sgfl-Mlul

Cloning Scheme:


ACCN: NM_001040159

ORF Size: 1299 bp

OTI Disclaimer: The molecular sequence of this clone aligns with the gene accession number as a point of reference only. However, individual transcript sequences of the same gene can differ through naturally occurring variations (e.g. polymorphisms), each with its own valid existence. This clone is substantially in agreement with the reference, but a complete review of all prevailing variants is recommended prior to use. [More info](#)

OTI Annotation: This clone was engineered to express the complete ORF with an expression tag. Expression varies depending on the nature of the gene.

Components: The ORF clone is ion-exchange column purified and shipped in a 2D barcoded Matrix tube containing 10ug of transfection-ready, dried plasmid DNA (reconstitute with 100 ul of water).

Reconstitution Method:

1. Centrifuge at 5,000xg for 5min.
2. Carefully open the tube and add 100ul of sterile water to dissolve the DNA.
3. Close the tube and incubate for 10 minutes at room temperature.
4. Briefly vortex the tube and then do a quick spin (less than 5000xg) to concentrate the liquid at the bottom.
5. Store the suspended plasmid at -20°C. The DNA is stable for at least one year from date of shipping when stored at -20°C.

RefSeq: [NM_001040159.1](#), [NP_001035249.1](#)

RefSeq Size: 2980 bp

RefSeq ORF: 1302 bp

Locus ID: 50859

UniProt ID: [Q9BQ16](#)

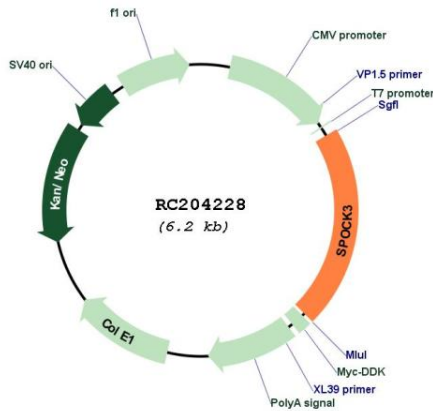
Cytogenetics: 4q32.3

Protein Families: Secreted Protein, Transmembrane

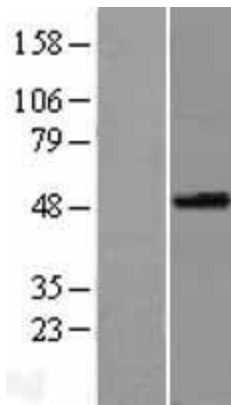
MW: 49.1 kDa

Gene Summary: This gene encodes a member of a novel family of calcium-binding proteoglycan proteins that contain thyroglobulin type-1 and Kazal-like domains. The encoded protein and may play a role in adult T-cell leukemia by inhibiting the activity of membrane-type matrix metalloproteinases. Alternatively spliced transcript variants encoding multiple isoforms have been observed for this gene. [provided by RefSeq, Oct 2011]

Product images:



Circular map for RC204228



Western blot validation of overexpression lysate (Cat# [LY421701]) using anti-DDK antibody (Cat# [TA50011-100]). Left: Cell lysates from untransfected HEK293T cells; Right: Cell lysates from HEK293T cells transfected with RC204228 using transfection reagent MegaTran 2.0 (Cat# [TT210002]).