

Product datasheet for RC204226

HAUS1 (NM_138443) Human Tagged ORF Clone

Product data:

Product Type:	Expression Plasmids
Product Name:	HAUS1 (NM_138443) Human Tagged ORF Clone
Tag:	Myc-DDK
Symbol:	HAUS1
Synonyms:	CCDC5; HEI-C; HEIC; HsT1461
Mammalian Cell Selection:	Neomycin
Vector:	pCMV6-Entry (PS100001)
E. coli Selection:	Kanamycin (25 ug/mL)
ORF Nucleotide Sequence:	>RC204226 ORF sequence Red=Cloning site Blue=ORF Green=Tags(s)

TTTTGTAATACGACTCACTATAGGGCGGCCGGAATTCGTCGACTGGATCCGGTACCGAGGAGATCTGCC
GCC**CGATCGCC**

ATGGAGCCGCAGGAGGAGAGAGAAACGCAGGTTGCTGCGTGGTTAAAAAATATTTGGAGATCATCCTA
TTCCACAGTATGAGGTGAACCCACGGACCACAGAGATTTACATCACCTTTCAGAACGCAACAGGGTCCG
GGACAGGGATGTCTACCTGGTAATAGAGGACTTGAAGCAGAAAGCAAGTGAATACGAGTCAGAAGCCAAG
TATCTTCAAGACCTTCTCATGGAGAGTGTGAATTTTTCCCGCCAATCTCTCTAGCACTGGTCCAGGT
ATCTGAATGCTTTGGTTGACAGTGGCGTGGCCCTTGAACAAAGGATACCTCGCTAGCTAGTTTTATCCC
TGCAGTGAATGATTTGACCTCTGATCTCTTTCGTACCAAATCCAAAAGTGAAGAAATCAAGATTGAACTG
GAAAACTTGAAAAATTTAACTGCAACTTTAGTATTAGAAAAATGTCTACAAGAGGATGTCAAGAAAG
CAGAGTTGCATCTGTCTACAGAAAGGCCAAAGTTGATAATCGTCGTCAGAACATGGACTTTCTAAAAGC
AAAGTCAGAGGAATTCAGATTTGGAATCAAGGCTGCAGAGGAGCAACTTTCAGCCAGAGGCATGGATGCT
TCTCTGTCTCATCAGTCTTAGTAGCACTATCAGAGAACTGGCAAGATTAAGCAACAGACTATACCTT
TGAAGAAAAATTTGGAGTCTATTTAGACTTAATGCCGAATCCGTCTCTTGCTCAAGTAAAAATTGAAGA
AGCAAAGCGAGAAGTATAGCATTGAAGCTGAAGTACAAGAAGAGTAGACATGATGGAAGT

ACGCGTACGCGGCCGCTCGAGCAGAACTCATCTCAGAAGAGGATCTGGCAGCAAATGATATCCTGGATT
ACAAGGATGACGACGATAAGGTTTAA



[View online »](#)

Protein Sequence: >RC204226 protein sequence
Red=Cloning site Green=Tags(s)

MEPQEERETQVAAWLKKIFGDHPIPQYEVNPRTEILHHLSENRVDRDRVYLVIEDLKQKASEYESEAK
 YLQDLLMESVNFSPANL SSTGSRYLNALVDSAVALETKDTSLASFIPAVNDLTSDFRTKSKSEEIKIEL
 EKLEKNLTATLVLEKCLQEDVKKAELHLSTERAKVDNRRQNMDFLKAKSEEFRFGIKAAEEQLSARGMDA
 SLSHQSLVALSEKLARLKQQTIP LKKKLESYLDLMPNPSLAQVKIEEAKRELD SIEAELTRRVDMMEL

TRTRPLEQKLISEEDLAANDILDYKDDDDKV

Chromatograms: https://cdn.origene.com/chromatograms/mk6432_f07.zip

Restriction Sites: SgfI-MluI

Cloning Scheme:

Cloning sites used for ORF Shuttling:



* The last codon before the Stop codon of the ORF

ACCN: NM_138443

ORF Size: 834 bp

OTI Disclaimer: The molecular sequence of this clone aligns with the gene accession number as a point of reference only. However, individual transcript sequences of the same gene can differ through naturally occurring variations (e.g. polymorphisms), each with its own valid existence. This clone is substantially in agreement with the reference, but a complete review of all prevailing variants is recommended prior to use. [More info](#)

OTI Annotation: This clone was engineered to express the complete ORF with an expression tag. Expression varies depending on the nature of the gene.

Components: The ORF clone is ion-exchange column purified and shipped in a 2D barcoded Matrix tube containing 10ug of transfection-ready, dried plasmid DNA (reconstitute with 100 ul of water).

Reconstitution Method:

1. Centrifuge at 5,000xg for 5min.
2. Carefully open the tube and add 100ul of sterile water to dissolve the DNA.
3. Close the tube and incubate for 10 minutes at room temperature.
4. Briefly vortex the tube and then do a quick spin (less than 5000xg) to concentrate the liquid at the bottom.
5. Store the suspended plasmid at -20°C. The DNA is stable for at least one year from date of shipping when stored at -20°C.

RefSeq: [NM_138443.4](#)

RefSeq Size: 1145 bp

RefSeq ORF: 837 bp

Locus ID: 115106

UniProt ID: [Q96CS2](#)

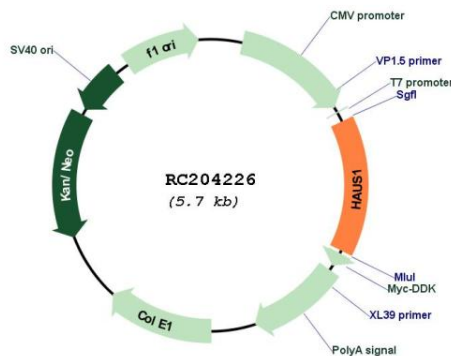
Cytogenetics: 18q21.1

Protein Families: Stem cell - Pluripotency

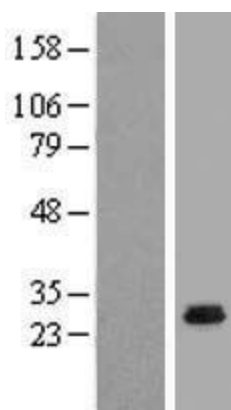
MW: 31.9 kDa

Gene Summary: HAUS1 is 1 of 8 subunits of the 390-kD human augmin complex, or HAUS complex. The augmin complex was first identified in Drosophila, and its name comes from the Latin verb 'augmentare,' meaning 'to increase.' The augmin complex is a microtubule-binding complex involved in microtubule generation within the mitotic spindle and is vital to mitotic spindle assembly (Goshima et al., 2008 [PubMed 18443220]; Uehara et al., 2009 [PubMed 19369198]). [supplied by OMIM, Jun 2010]

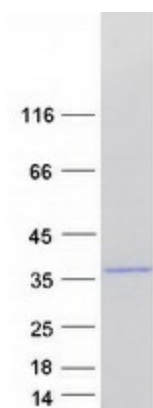
Product images:



Circular map for RC204226



Western blot validation of overexpression lysate (Cat# [LY408697]) using anti-DDK antibody (Cat# [TA50011-100]). Left: Cell lysates from untransfected HEK293T cells; Right: Cell lysates from HEK293T cells transfected with RC204226 using transfection reagent MegaTran 2.0 (Cat# [TT210002]).



Coomassie blue staining of purified HAUS1 protein (Cat# [TP304226]). The protein was produced from HEK293T cells transfected with HAUS1 cDNA clone (Cat# RC204226) using MegaTran 2.0 (Cat# [TT210002]).