

Product datasheet for RC204225

WDFY2 (NM_052950) Human Tagged ORF Clone

Product data:

Product Type:	Expression Plasmids
Product Name:	WDFY2 (NM_052950) Human Tagged ORF Clone
Tag:	Myc-DDK
Symbol:	WDFY2
Synonyms:	PROF; WDF2; ZFYVE22
Mammalian Cell Selection:	Neomycin
Vector:	pCMV6-Entry (PS100001)
E. coli Selection:	Kanamycin (25 ug/mL)
ORF Nucleotide Sequence:	>RC204225 ORF sequence Red=Cloning site Blue=ORF Green=Tags(s)

TTTTGTAATACGACTCACTATAGGGCGGCCGGAATTCGTCGACTGGATCCGGTACCGAGGAGATCTGCC
GCC**CGATCGC**C

ATGGCGGCGGAGATCCAGCCCAAGCCTCTGACCCGAAGCCGATCCTGCTGCAGCGGATGGAGGGTCCC
AGGAGGTGGTGAATATGGCCGTGATCGTGCCCAAAGAGGAGGGCGTCATCAGCGTCTCCGAGGACAGGAC
AGTTCGTGTTGGTTAAAGAGAGACAGTGGACAGTATTGGCCAAGCGTATACCATGCAATGCCTTCTCCA
TGTTTCATGCATGTCTTTAACCCGAAACAAGAAGACTGTCCATAGGTCTAGACAATGGTACAATCTCAG
AGTTTATATTGTCAGAAGATTATAACAAGATGACTCCTGTGAAAACTATCAAGCGCATCAGAGCAGAGT
GACGATGATCCTGTTTGTCTGGAGCTGGAGTGGGTGCTGAGCACAGGACAGGACAAGCAATTTGCCTGG
CACTGCTCTGAGAGTGGGAGCGCCTGGGAGGTTATCGGACCAAGTGTGTGGCCTCAGGCCGTCAATTTG
ATGTTGAAACCCGGCATGTGTTTATCGGTGACCACTCAGGCCAAGTAACAATCCTCAAATGGAGCAAGA
AACTGCACCCCTGGTCACAACATTCAGAGGACACACAGGTGGGGTGACCGCTCTCTGTTGGGACCCAGTC
CAGCGGTGTTGTTCTCAGGCAGTTCAGATCACTCTGTATCATGTGGGACATCGGTGGGAGAAAAGGAA
CAGCCATCGAGCTCAAGGACACAACGACAGAGTCCAGGCCCTCTCTATGCACAGCACACGCGACAATT
GATCTCCTGTGGCGGTGATGGTGGGATTGTCGTCTGGAACATGGACGTGGAGAGGAGAGACCCCTGAA
TGTTGGACAGTATTCTGCCAAAAGTGTGATCAGCCTTTCTTCTGGAACCTCAAGCAAATGTGGGACA
GTAAGAAAATTGGTCTAAGACAGCACCCTGCCGCAAGTGTGGGAAGCCGTCTGTGGCAAGTGCAGCTC
CAAGCGCTCCTCCATCCCCTGATGGGCTTCGAGTTTGAAGTGAAGGCTGTGTGACAGCTGCCACGAGGCC
ATCACAGATGAAGAAGTGCACCCACAGCCACCTTCCATGACAGTAAACATAACATTGTGCATGTGCATT
TCGATGCAACCAGAGGATGGTTACTGACTTCTGGAAGTGAACAAGTTATTAAGTTGTGGGATATGACCCC
AGTCGTGTCT

ACGCGTACGCGGCCGCTCGAGCAGAAACTCATCTCAGAAGAGGATCTGGCAGCAAATGATATCCTGGATT
ACAAGGATGACGACGATAAGGTTTAA



[View online >](#)

Reconstitution Method:

1. Centrifuge at 5,000xg for 5min.
2. Carefully open the tube and add 100ul of sterile water to dissolve the DNA.
3. Close the tube and incubate for 10 minutes at room temperature.
4. Briefly vortex the tube and then do a quick spin (less than 5000xg) to concentrate the liquid at the bottom.
5. Store the suspended plasmid at -20°C. The DNA is stable for at least one year from date of shipping when stored at -20°C.

RefSeq: [NM_052950.4](#)

RefSeq Size: 3809 bp

RefSeq ORF: 1203 bp

Locus ID: 115825

UniProt ID: [Q96P53](#)

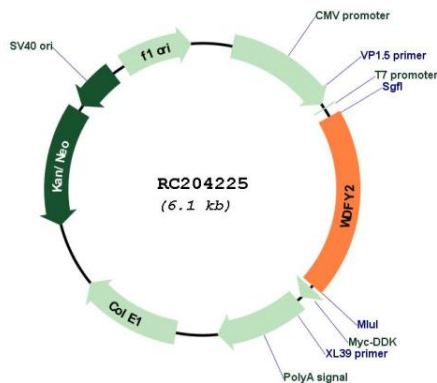
Cytogenetics: 13q14.3

Domains: FYVE, WD40

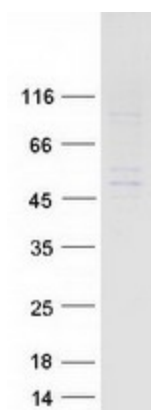
MW: 45.2 kDa

Gene Summary: This gene encodes a protein that contains two WD domains and an FYVE zinc finger region. The function of this gene is unknown. An alternatively spliced transcript variant of this gene may exist. [provided by RefSeq, Jul 2008]

Product images:



Circular map for RC204225



Coomassie blue staining of purified WDFY2 protein (Cat# [TP304225]). The protein was produced from HEK293T cells transfected with WDFY2 cDNA clone (Cat# RC204225) using MegaTran 2.0 (Cat# [TT210002]).