

Product datasheet for RC204211

TOMM40 (NM_006114) Human Tagged ORF Clone

Product data:

Product Type:	Expression Plasmids
Product Name:	TOMM40 (NM_006114) Human Tagged ORF Clone
Tag:	Myc-DDK
Symbol:	TOMM40
Synonyms:	C19orf1; D19S1177E; PER-EC1; PEREC1; TOM40
Mammalian Cell Selection:	Neomycin
Vector:	pCMV6-Entry (PS100001)
E. coli Selection:	Kanamycin (25 ug/mL)
ORF Nucleotide Sequence:	>RC204211 representing NM_006114 Red=Cloning site Blue=ORF Green=Tags(s)

TTTTGTAATACGACTCACTATAGGGCGCCGGGAATTCGTCGACTGGATCCGGTACCGAGGAGATCTGCC
GCC**CGATCGCC**

ATGGGGAACGTGTTGGCTGCCAGCTCGCCGCCCGCAGGGCCGCCACCGCCGCTGCGCCGGCCCTCGTGG
GGCTGCCGCCACCTCCGCCCTCGCCGCCGGCTTACGCTGCCGCCGCTGGGAGGCAGCCTGGGCGCCGG
CACCAGTACGAGTCGAAGTTCGGAACGGACCCCGGGGCTGCAACCGCCAGCGCCTCAGGGGCCCGGAG
GATGGGGCCTGCGGCTGCTGCCAACCAGGGCATTGAGGAGTGCCACCGGAAGTGAAGGAGCTGT
TTCCATTTCAGATGGAGGTGTCAAGCTCACAGTCAACAAGGGTTGAGTAACCATTTTCAGGTCAACCA
CACAGTAGCCCTCAGCACAATCGGGGAGTCCAACCTACCACTTCGGGGTACATATGTGGGACAAAGCAG
CTGAGTCCCACAGAGGCTTCCCTGTAAGTGGTGGTGACATGGACAACAGTGGCAGTCTCAACGCTCAGG
TCATTCACCAGCTGGGCCCGGTCTCAGGTCCAAGATGGCCATCCAGACCCAGCAGTCAAGTTTGTGAA
CTGGCAGGTGGACGGGGAGTATCGGGGCTGACTTCACAGCAGCCGTCACCCCTGGGGAACCCAGACGTC
CTCGTGGGTTCAGGAATCCTCGTAGCCACTACCTCCAGAGCATCACGCCTTGCCCTGGCCCTGGGTGGAG
AGCTGGTCTACCACCGCGGCCCTGGAGAGGAGGGCACTGTCATGTCTCTAGCTGGGAAATACACATTGAA
CAACTGGTTGGCAACGGTAACGTTGGGCCAGCCGGCATGCACGCAACATACTACCACAAAGCCAGTGAC
CAGCTGCAGGTGGGTGTGGAGTTTGAGGCCAGCACAAGGATGCAGGACACCAGCGTCTCCTCGGGTACC
AGCTGGACCTGCCAAGGCCAACCTCCTTTCAAAGGCTCTGTGGATAGCAACTGGATCGTGGGTGCCAC
GCTGGAGAAGAAGCTCCACCCCTGCCCTGACTGGCCCTTGGGGCCTTCTGAATCACCGCAAGAAC
AAGTTTCAGTGTGGCTTTGGCCTCACCATCGGC

ACGCGTACGCGGCCGCTCGAGCAGAACTCATCTCAGAAGAGGATCTGGCAGCAATGATATCCTGGATT
ACAAGGATGACGACGATAAGGTTTAA



[View online »](#)

Protein Sequence: >RC204211 representing NM_006114
Red=Cloning site Green=Tags(s)

MGNVLAASSPPAGPPPPAPALVGLPPPPSPPGFTLPPLGGSLGAGTSTSRSSERTPGAATASASGAAE
 DGACGCLPNPGTFEECHRKCKELFPIQMEGVKLTVNKGLSNHFQVNHTVALSTIGESNYHFGVTVYVGTKQ
 LSPTEAFPVLVGDMDNSGSLNAQVIHQGLPGLRSKMAIQTSKFVNWQVDGEYRGSDFTAAVTLGNPDV
 LVGSGILVAHYLQSIPTCLALGGELVYHRRPGEETVMSLAGKYTLNNWLATVTLGQAGMHATYYHKASD
 QLQVGVFEASTRMQDTSVSYFGYQLDLPKANLLFKGSVDSNWIVGATLEKKLPLPLTLALGAFLNHRKN
 KFQCGFGLTIG

TRTRPLEQKLISEEDLAANDILDYKDDDDKV

Chromatograms: https://cdn.origene.com/chromatograms/mg3950_h05.zip

Restriction Sites: SgfI-MluI

Cloning Scheme:



* The last codon before the Stop codon of the ORF

ACCN: NM_006114

ORF Size: 1083 bp

OTI Disclaimer: The molecular sequence of this clone aligns with the gene accession number as a point of reference only. However, individual transcript sequences of the same gene can differ through naturally occurring variations (e.g. polymorphisms), each with its own valid existence. This clone is substantially in agreement with the reference, but a complete review of all prevailing variants is recommended prior to use. [More info](#)

OTI Annotation: This clone was engineered to express the complete ORF with an expression tag. Expression varies depending on the nature of the gene.

Components: The ORF clone is ion-exchange column purified and shipped in a 2D barcoded Matrix tube containing 10ug of transfection-ready, dried plasmid DNA (reconstitute with 100 ul of water).

Reconstitution Method:

1. Centrifuge at 5,000xg for 5min.
2. Carefully open the tube and add 100ul of sterile water to dissolve the DNA.
3. Close the tube and incubate for 10 minutes at room temperature.
4. Briefly vortex the tube and then do a quick spin (less than 5000xg) to concentrate the liquid at the bottom.
5. Store the suspended plasmid at -20°C. The DNA is stable for at least one year from date of shipping when stored at -20°C.

RefSeq: [NM_006114.3](#)

RefSeq Size: 1700 bp

RefSeq ORF: 1086 bp

Locus ID: 10452

UniProt ID: [O96008](#)

Cytogenetics: 19q13.32

Domains: Euk_porin

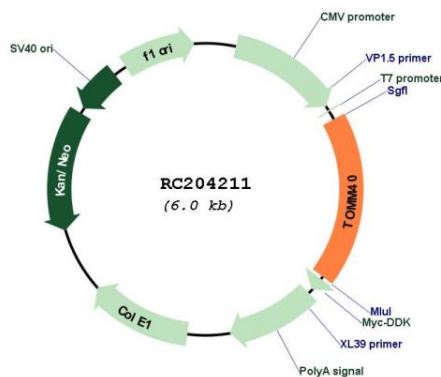
Protein Families: Druggable Genome, Ion Channels: Other

Protein Pathways: Amyotrophic lateral sclerosis (ALS)

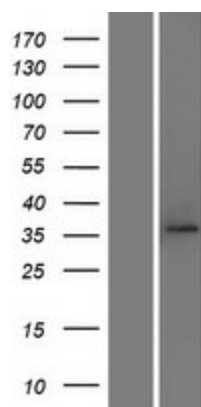
MW: 37.7 kDa

Gene Summary: The protein encoded by this gene is localized in the outer membrane of the mitochondria. It is the channel-forming subunit of the translocase of the mitochondrial outer membrane (TOM) complex that is essential for import of protein precursors into mitochondria. Alternatively spliced transcript variants have been found for this gene. [provided by RefSeq, Aug 2015]

Product images:



Circular map for RC204211



Western blot validation of overexpression lysate (Cat# [LY427019]) using anti-DDK antibody (Cat# [TA50011-100]). Left: Cell lysates from untransfected HEK293T cells; Right: Cell lysates from HEK293T cells transfected with [RC225543] using transfection reagent MegaTran 2.0 (Cat# [TT210002]).