

Product datasheet for **RC204210**

TNIP1 (NM_006058) Human Tagged ORF Clone

Product data:

Product Type:	Expression Plasmids
Product Name:	TNIP1 (NM_006058) Human Tagged ORF Clone
Tag:	Myc-DDK
Symbol:	TNIP1
Synonyms:	ABIN-1; NAF1; nip40-1; VAN
Mammalian Cell Selection:	Neomycin
Vector:	pCMV6-Entry (PS100001)
E. coli Selection:	Kanamycin (25 ug/mL)



[View online »](#)

ORF Nucleotide
Sequence:

>RC204210 ORF sequence
Red=Cloning site Blue=ORF Green=Tags(s)

TTTTGTAATACGACTCACTATAGGGCGGCCGGGAATTCGTCGACTGGATCCGGTACCGAGGAGATCTGCC
GCCGCGATCGCC

ATGGAAGGGAGAGACCGTACCGGATCTACGACCTGGGGCAGCGTGCCCTCAGGAGAGGCATCCGCAG
CTTTTGTAGCGCCTAGTGAAGGAGAATCCCGGCTGAAGGAAAAAATGCAAGGGATAAAGATGTTAGGGGA
GCTTTTGAAGAGTCCCAGATGGAAGCGACCAGGCTCCGGCAGAAGGCAGAGGAGCTAGTGAAGGACAAC
GAGCTGCTCCCACCACCTTCTCCCTCCTTGGGCTCCTTCGACCCCTGGCTGAGCTCACAGGAAAGGACT
CAAATGTCACAGCATCTCCACAGCCCCTGCATGCCCCAGTGACAAGCCAGCACCAGTCCAGAAGCCTCC
ATCCAGTGGCACCTCCTCTGAATTTGAAGTGGTCACTCCTGAGGAGCAGAATTCACCAGAGAGCAGCAGC
CATGCCAATGCGATGGCGCTGGACCCCTGCCCGTGAGGACGGCAACCTGATGCTGCACCTGCAGCGCC
TGGAGACCACGCTGAGTGTGTGTCGAGGAGCCGGACCAGGCCAGCTTTCACCCACCTGGGCCGCAT
GGCCCTGGAGTTC AACCGACTGGCATCCAAGGTGCACAAGAATGAGCAGCGCACCTCCATTCTGCAGACC
CTGTGTGAGCAGCTTCGGAAGGAGAACGAGGCTCTGAAGGCCAAGTTGGATAAAGGGCCTGGAACAGCGGG
ATCAGGCTGCCGAGAGGCTGCCGGAGGAAAAATTTGGAGCTCAAGAAGTTGTTGATGAGCAATGGCAACA
AGAGGGTGCCTCTGGCGGCCAGGCTCACCGAAGATGGAAGGGACAGGCAAGAAGGCAGTGGCTGGACAG
CAGCAGGCTAGTGTGACGGCAGGTAAGGTCCCAGAGGTGGTGGCCTTGGGCGCAGCCGAGAAGAAGGTGA
AGATGCTGGAGCAGCAGCGCAGTGAAGTGAACAAGCAGTGGGACCAGCATTTCGGTCCAT
GAAGCAGCAGTATGAGCAGAAGTCACTGAGCTGCGTCAGAAGCTGGCTGATTTGCAGAAGCAGGTGACT
GACCTGGAGGCCGAGCGGAGCAGAAGCAGCGTGACTTTGACCGCAAGCTCCTCCTGGCCAAGTCCAAGA
TTGAAATGGAGGAGACCACAAGGAGCAGCTGACAGCAGAGGCCAAGGAGCTGCCCAAAAGGTCAAGTA
CCTGCAGGATCAGCTGAGCCCACTCACCCGACAGCGTGAGTACCAGGAAAAGGAGATCCAGCGGCTCAAC
AAGGCCCTGGAGGAAGCACTGAGCATCCAAACCCGCCATCATCTCCACCAACAGCATTGGGAGCCAG
AAGGAGCAGGGGCCCTCCTAAGGAAACAGGAGCTGGTCACGCAGAATGAGTTGCTGAAACAGCAGGTGAA
GATCTTCGAGGAGGACTTCAGAGGGAGCGCAGTATCGTGAGCGCATGAATGAGGAGAAGGAAAGAGCTG
AAGAAGCAAGTGGAGAAGCTGCAGGCCAGGTACCCCTGTCAAATGCCCAGCTAAAAGCATTCAAAGATG
AGGAGAAGGCAAGAGAAGCCCTCAGACAGCAGAAGAGGAAAGCAAAGGCCTCAGGAGAGCGTTACCATGT
GGAGCCCCACCCAGAACATCTCTGCGGGGCTACCCCTACGCCTACCCGCCATGCCAGCCATGGTGCCA
CACCATGGCTTCGAGGACTGGTCCAGATCCGCTACCCCTCCCCCATGGCCATGGAGCACCCGCCCC
CACTCCCAACTCGCGCCTCTTCCATCTGCCGGAATACACTGGCGTCTACCCCTGTGGAGGGGTTGAAA
TCCAAATCAGAGCTCCCAAGTGATGGACCTCCCACAGCCAGGCCTACAGAACCAGAGTCTCCAAAAAT
GACCGTGAGGGGCTCAG

ACGCGTACGCGGCCGCTCGAGCAGAACTCATCTCAGAAGAGGATCTGGCAGCAATGATATCCTGGATT
ACAAGGATGACGACGATAAGGTTTAA

Protein Sequence: >RC204210 protein sequence
Red=Cloning site Green=Tags(s)

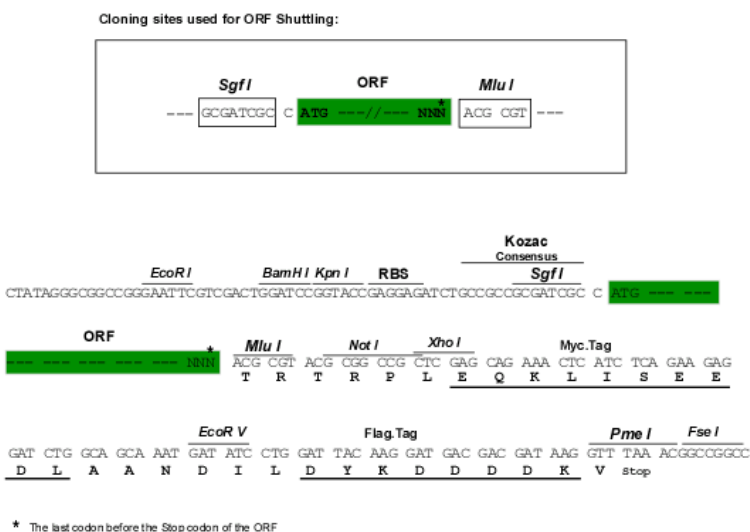
```
MEGRGPYRIYDPGGSVPSGEASAAFERLVKENSRLKEKMQGKMLGELLEESQMEATRLRQKAEELVKDN
ELLPPPSPLGSFDPDLAELTGKDSNVTASPTAPACPSDKPAPVQKPPSSGTSSEFEVVTPEEQNSPESSS
HANAMALDPLPREDGNLMLHLQRLETTLSVCAEEPDPHGQLFTHLGRMALEFNRLASKVHKNEQRTSILQT
LCEQLRKENEALKAKLDKGLEQRDQAAERLREENLELKKLLMSNGNKEGASGRPGSPKMEGTGKKAVAGQ
QQASVTAGKVPEVVALGAAEKVKMLEQQRSELELVNKQWDQHFHRSMKQQYEQKITELRQKLDLQKQVT
DLEAEREQKQRDFDKLLLAKSКИEEMEETDKEQLTAEAKELRQKVKYLDQQLSPLTRQREYQEKEIQRLN
KALEEALSIQTPPSSPPTAFGSPEGAGALLRKQELVTQNELLKQVKIFEEDFQRERSDRERMNEEKEEL
KKQVEKLQAQVTL SNAQLKAFKDEEKAREALRQQRKAKASGERYHVPHPEHLGCAYPYAYPPMPAMVP
HHGFEDWSQIRYPPPPMAMEHPPPLPNSRFLHLP EYTWRLPCGGVRNPNQSSQVMDPPTARPTPESPKN
DREGPQ
```

TRTRPLEQKLISEEDLAANDILDYKDDDDKV

Chromatograms: https://cdn.origene.com/chromatograms/mk6231_b05.zip

Restriction Sites: SgfI-MluI

Cloning Scheme:



ACCN: NM_006058

ORF Size: 1908 bp

OTI Disclaimer: The molecular sequence of this clone aligns with the gene accession number as a point of reference only. However, individual transcript sequences of the same gene can differ through naturally occurring variations (e.g. polymorphisms), each with its own valid existence. This clone is substantially in agreement with the reference, but a complete review of all prevailing variants is recommended prior to use. [More info](#)

OTI Annotation: This clone was engineered to express the complete ORF with an expression tag. Expression varies depending on the nature of the gene.

Components: The ORF clone is ion-exchange column purified and shipped in a 2D barcoded Matrix tube containing 10ug of transfection-ready, dried plasmid DNA (reconstitute with 100 ul of water).

Reconstitution Method:

1. Centrifuge at 5,000xg for 5min.
2. Carefully open the tube and add 100ul of sterile water to dissolve the DNA.
3. Close the tube and incubate for 10 minutes at room temperature.
4. Briefly vortex the tube and then do a quick spin (less than 5000xg) to concentrate the liquid at the bottom.
5. Store the suspended plasmid at -20°C. The DNA is stable for at least one year from date of shipping when stored at -20°C.

RefSeq: [NM_006058.5](#)

RefSeq Size: 2933 bp

RefSeq ORF: 1911 bp

Locus ID: 10318

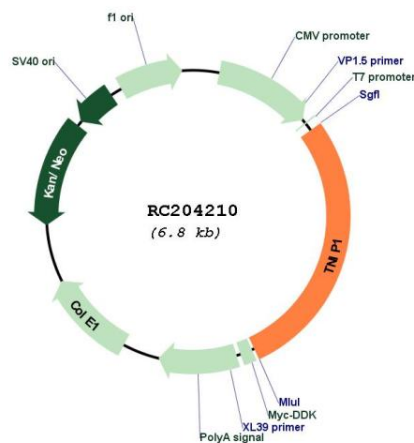
UniProt ID: [Q15025](#)

Cytogenetics: 5q33.1

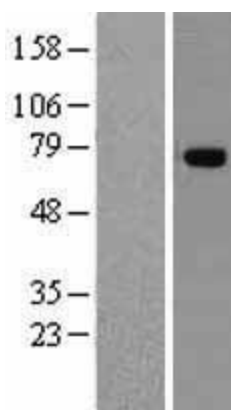
MW: 71.9 kDa

Gene Summary: This gene encodes an A20-binding protein which plays a role in autoimmunity and tissue homeostasis through the regulation of nuclear factor kappa-B activation. Mutations in this gene have been associated with psoriatic arthritis, rheumatoid arthritis, and systemic lupus erythematosus. Multiple transcript variants encoding different isoforms have been found for this gene. [provided by RefSeq, Nov 2011]

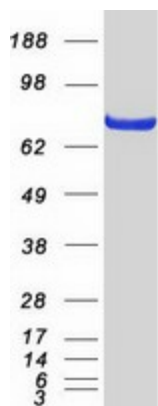
Product images:



Circular map for RC204210



Western blot validation of overexpression lysate (Cat# [LY416891]) using anti-DDK antibody (Cat# [TA50011-100]). Left: Cell lysates from untransfected HEK293T cells; Right: Cell lysates from HEK293T cells transfected with RC204210 using transfection reagent MegaTran 2.0 (Cat# [TT210002]).



Coomassie blue staining of purified TNIP1 protein (Cat# [TP304210]). The protein was produced from HEK293T cells transfected with TNIP1 cDNA clone (Cat# RC204210) using MegaTran 2.0 (Cat# [TT210002]).