

Product datasheet for **RC204208**

Dysbindin (DTNBP1) (NM_032122) Human Tagged ORF Clone

Product data:

Product Type:	Expression Plasmids
Product Name:	Dysbindin (DTNBP1) (NM_032122) Human Tagged ORF Clone
Tag:	Myc-DDK
Symbol:	Dysbindin
Synonyms:	BLOC1S8; DBND; HPS7; My031; SDY
Mammalian Cell Selection:	Neomycin
Vector:	pCMV6-Entry (PS100001)
E. coli Selection:	Kanamycin (25 ug/mL)
ORF Nucleotide Sequence:	>RC204208 ORF sequence Red=Cloning site Blue=ORF Green=Tags(s)

TTTTGTAATACGACTCACTATAGGGCGGCCGGAATTCGTCGACTGGATCCGGTACCGAGGAGATCTGCC
GCC**CGATCGCC**

ATGCTGGAGACCCTTCGCGAGCGGCTGCTGAGCGTGCAGCAGGATTTACCTCCGGGCTGAAGACTTTAA
GTGACAAGTCAAGAGAAGCAAAGTAAAAAGCAAACCCAGGACTGTTCCATTTTTGCCAAAGTACTCTGC
TGGATTAGAATTACTTAGCAGGTATGAGGATACATGGGCTGCACTTCACAGAAGAGCCAAAGACTGTGCA
AGTCTGGAGAGCTGGTGGATAGCGAGGTGGTCATGCTTTCTGCGCACTGGGAGAAGAAAAAGACAAGCC
TCGTGGAGCTGCAAGAGCAGCTCCAGCAGCTCCAGCTTTAATCGCAGACTTAGAATCCATGACAGCAAA
TCTGACTCATTTAGAGGCGAGTTTTGAGGAGGTAGAGAACAACCTGCTGCATCTGGAAGACTTATGTGGG
CAGTGTGAATTAGAAAGATGCAAACATATGCAGTCCCAGCAACTGGAGAATTACAAGAAAAATAAGAGGA
AGGAACTTGAAACCTTCAAAGCTGAACTAGATGCAGAGCACGCCAGAAAGTCTGGAAATGGAGCACAC
CCAGCAAATGAAGCTGAAGGAGCGGCAGAAAGTTTTTTGAGGAAGCCTTCCAGCAGGACATGGAGCAGTAC
CTGTCCACTGGCTACCTGCAGATTGCAGAGCGGCAGAGCCATAGGCAGCATGTCATCCATGGAAGTGA
ACGTGGACATGCTGGAGCAGATGGACCTGATGGACATATCGGACCAGGAGGCCCTGGACGTCTTCTGAA
CTCTGGAGGAGAAGAGAACAACACTGTGCTGTCCCCCGCCTTAGGGCCTGAATCCAGTACCTGTCAGAATGAG
ATTACCCTCCAGTTCCAAATCCCTCAGAATTAAGAGCCAAGCCACCTTCTTCTCCACCTGCACCCG
ACTCGGCCACCCGGGACATCAGTGAGGGTGGGGAGTCCCCGTTGTTTCAGTCCGATGAGGAGGAAGTTCA
GGTGGACTGTCCTGGCCACATCACACACTGACAGAGAGCCACTCCGGATGGTGGTGGAGACAGCGAC
TCT

ACGCGTACGCGGCCGCTCGAGCAGAAACTCATCTCAGAAGAGGATCTGGCAGCAATGATATCCTGGATT
ACAAGGATGACGACGATAAGGTTTAA



[View online »](#)

Protein Sequence: >RC204208 protein sequence
Red=Cloning site Green=Tags(s)

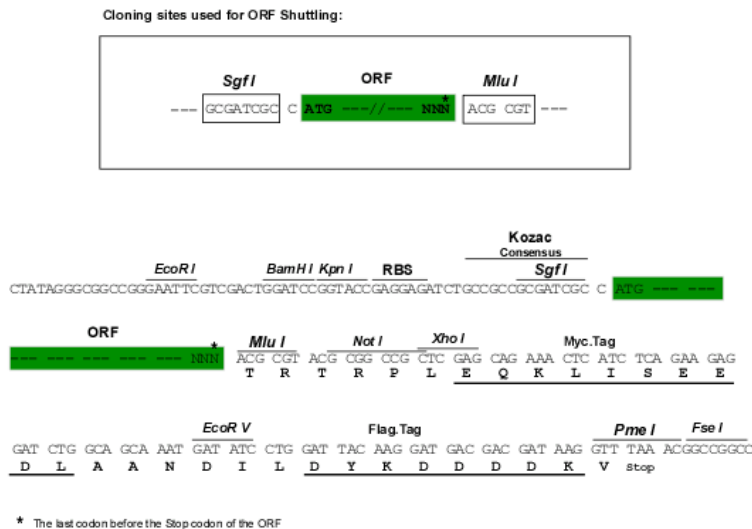
MLETLRERLLSVQQDFTSGLKTLSDKSREAKVKSQPRTVPFLPKYSAGLELLSRYEDTWAALHRRRAKDCA
 SAGELVDSEVVMLSAHWEKKKTSLVELQEQLQQLPALIADLESMTANLTHLEASFEEVENLLHLEDLCG
 QCELERCKHMQSQQLENYKKNRKELETFKAELDAEHAQKVLMEHTQQMKLKERQKFFEEAFQQDMEQY
 LSTGYLQIAERREPIGSMSSMEVNVDMLEQMDLMDISDQEALDVFLNSGGEENTVLSPALGPESSTCQNE
 ITLQVPNPSELRAKPPSSSTCTDSATRDISEGGESPVVQSDSEEVQVDTALATSHTDREATPDGGEDSD
 S

TRTRPLEQKLISEEDLAANDILDYKDDDDKV

Chromatograms: https://cdn.origene.com/chromatograms/mk6059_a07.zip

Restriction Sites: SgfI-MluI

Cloning Scheme:



ACCN: NM_032122

ORF Size: 1053 bp

OTI Disclaimer: The molecular sequence of this clone aligns with the gene accession number as a point of reference only. However, individual transcript sequences of the same gene can differ through naturally occurring variations (e.g. polymorphisms), each with its own valid existence. This clone is substantially in agreement with the reference, but a complete review of all prevailing variants is recommended prior to use. [More info](#)

OTI Annotation: This clone was engineered to express the complete ORF with an expression tag. Expression varies depending on the nature of the gene.

Components: The ORF clone is ion-exchange column purified and shipped in a 2D barcoded Matrix tube containing 10ug of transfection-ready, dried plasmid DNA (reconstitute with 100 ul of water).

Reconstitution Method:

1. Centrifuge at 5,000xg for 5min.
2. Carefully open the tube and add 100ul of sterile water to dissolve the DNA.
3. Close the tube and incubate for 10 minutes at room temperature.
4. Briefly vortex the tube and then do a quick spin (less than 5000xg) to concentrate the liquid at the bottom.
5. Store the suspended plasmid at -20°C. The DNA is stable for at least one year from date of shipping when stored at -20°C.

RefSeq: [NM_032122.5](#)

RefSeq Size: 1429 bp

RefSeq ORF: 1056 bp

Locus ID: 84062

UniProt ID: [Q96EV8](#)

Cytogenetics: 6p22.3

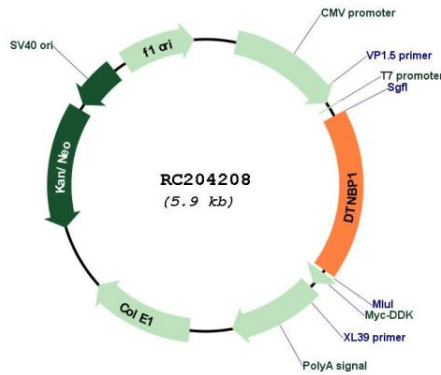
Domains: DUF546

Protein Families: Druggable Genome

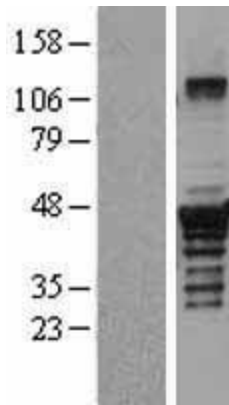
MW: 39.5 kDa

Gene Summary: This gene encodes a protein that may play a role in organelle biogenesis associated with melanosomes, platelet dense granules, and lysosomes. A similar protein in mouse is a component of a protein complex termed biogenesis of lysosome-related organelles complex 1 (BLOC-1), and binds to alpha- and beta-dystrobrevins, which are components of the dystrophin-associated protein complex (DPC). Mutations in this gene are associated with Hermansky-Pudlak syndrome type 7. This gene may also be associated with schizophrenia. Multiple transcript variants encoding distinct isoforms have been identified for this gene. [provided by RefSeq, Jul 2008]

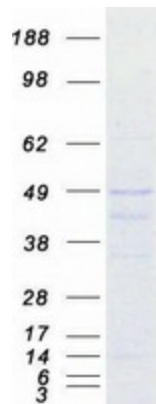
Product images:



Circular map for RC204208



Western blot validation of overexpression lysate (Cat# [LY403167]) using anti-DDK antibody (Cat# [TA50011-100]). Left: Cell lysates from untransfected HEK293T cells; Right: Cell lysates from HEK293T cells transfected with RC204208 using transfection reagent MegaTran 2.0 (Cat# [TT210002]).



Coomassie blue staining of purified DTNBP1 protein (Cat# [TP304208]). The protein was produced from HEK293T cells transfected with DTNBP1 cDNA clone (Cat# RC204208) using MegaTran 2.0 (Cat# [TT210002]).