

Product datasheet for **RC204207**

ZNF689 (NM_138447) Human Tagged ORF Clone

Product data:

Product Type:	Expression Plasmids
Product Name:	ZNF689 (NM_138447) Human Tagged ORF Clone
Tag:	Myc-DDK
Symbol:	ZNF689
Synonyms:	TIPUH1
Mammalian Cell Selection:	Neomycin
Vector:	pCMV6-Entry (PS100001)
E. coli Selection:	Kanamycin (25 ug/mL)



[View online »](#)

ORF Nucleotide Sequence:

>RC204207 ORF sequence
 Red=Cloning site Blue=ORF Green=Tags(s)

TTTTGTAATACGACTCACTATAGGGCGGCCGGGAATTCGTCGACTGGATCCGGTACCGAGGAGATCTGCC
 GCC**CGCATCGCC**

ATGGCGCCACCTTCGGCTCCGCTCCCTGCGCAGGGACCAGGAAAGCCAGACCCAGTCGGAAAAGGGGCA
 GGAGGCCGAGGGCTCTGAAGTTCGTGGACGTGGCCGTGTACTTCTCCCGGAGGAGTGGGCTGCCTGCG
 GCCCGCGCAGAGGGCCCTGTACCGGACGTGATGCGGGAGACCTACGGTACCTGGGCGCGCTCGGGTGC
 GCAGGTCCCAAACCAGCCCTCATCTCCTGGTTGGAACGAAACACCGATGACTGGGAACCGGCTGCTCTAG
 ATCCGAGGAGTACCGAGAGGGCTAACAGTCCAGAGAAAAAGCAGAACCAGAAAGAAGAATGGGGAGAA
 GGAAGTATCCCGCTAAGGAGGCACCCCGAAAGGGGAAGCGAGGCCGGAGGCCAGCAAACCCCGACTG
 ATTCTAGGCAGACGTCCGGGGGCCCATCTGCCCTGACTGCGGTGTACCTTCCCTGATCATCAGGCC
 TGGAGAGCCACAAGTGCGCCAGAATCTAAAAAGCCTTACCCTTGCCAGACTGTGGCGCCGCTTTTC
 CTATCCATCCCTGCTGGTCAGTACCGGGCGGCACACTCCGGCGAGTGCCCTATGTTTGTGACCAGTGT
 GGCAAACGTTTCTCCAGCGCAAGAACCTCTCCAGCACCAGGTATCCATACAGGGGAGAAGCCCTATC
 ACTGCCCTGACTGTGGTGCCTGCTTCCGGAGGAGCCGGTCTTGCCCAATCACCGGACCACACACAGG
 TGAAAAACCCACCAGTGCCTAGCTGTGGACGTGCTTCCGCTACCCCTCCCTGCTAGCCATCCACCAG
 CGTACACACACGGGAGAGAAGCCCTACACTTGCCTCGAGTGCAACCGCCGCTTCCGCCAGCGCACGGCC
 TCGTATCCACCAGCGCATCCACACGGGCGAGAAGCCCTACCCGTGCCGGACTGCGAGCGGGCGCTTCTC
 CTCTCTCTCGCTGGTCACTACCGCGGTGTGCACTCTGGGGAGCGTCCCTATGCCTGCGAGCACTGT
 GAGGCCCGCTTCTCCAGCGCAGCACGCTGCTCCAGCACCAGCTTTGCACACCGGAGAGAAGCCCTACC
 CCTGCCAGACTGTGGCGTGCCTTCCGGCGGAGCGGCTCCCTGGCCATCCATCGCAGCAGCACACAGA
 GGAGAAGCTGCACGCTGCGACGACTGTGGTCCGCGCTTTGCTACCCCTCACTGCTGGCCAGCCACCGG
 CGCGTGCCTCGGGCAGCGGCCCTATGCCTGCGACCTTTGCTCAAGCGTTTTGCTCAGTGAGGCCACC
 TGGCCAGCACCAGTGTGCACACGGGGAGAAGCCTTTCCCTGCCTCGAGTGTGGCCGTGCTTCCG
 CCAGAGGTGGTCTCTGGCTGTCCACAAGTGTAGCCCAAGGCCCAAACTGTAGCCCTAGATCTGCTATC
 GGGGGCTCCAGTCAGAGGGGCAACGCCAT

ACGCGTACGCGGCCGCTCGAGCAGAAACTCATCTCAGAAGAGGATCTGGCAGCAAATGATATCTGGATT
 ACAAGGATGACGACGATAAGGTTTAA

Protein Sequence:

>RC204207 protein sequence
 Red=Cloning site Green=Tags(s)

MAPPAPLPAQPGKARPSRKRGRPRALKFVDVAVYFSPEEWGCLRPAQRALYRDVMRETYGHLGALGC
 AGPKPALISWLERNTDDWEPAALDPQEYPRGLTVQRKSRTRKNGEKEVFPPEAPRKGRGRRRSPKRL
 IPRQTSGGPICPDCGCTFPDHQALESHKCAQNLKPYPCDCGRRFSYPSLLVSHRRAHSGECPYVCDQC
 GKRFQRKNSLQHQVIHTGKPYHPCDCGRFRRSRSLANHRTHHTGKPHQCPSCGRRFAYPSSLAIHQ
 RTHHTGKPYTCLCNRRFRQRTALVIHQRIHTGKPYPCDCERRFSSSSRLVSHRRVHSGERPYACEHC
 EARFSQRSTLLQHQLLHTGKPYPCDCGRAFRSSGLAIHRSTHTEKLAHACDDCGRRFAYPSSLASHR
 RVHSGERPYACDLCSKRFAQWSHLAQHLLHTGKPFPCLECGRCFRQRWSLAVHKCSPKAPNCSPRSAI
 GGSSQRGNAH

TRTRPLEQKLISEEDLAANDILDYKDDDDKV

Chromatograms:

https://cdn.origene.com/chromatograms/mk6432_b01.zip

Restriction Sites:

Sgfl-Mlul

Cloning Scheme:


ACCN: NM_138447

ORF Size: 1500 bp

OTI Disclaimer: The molecular sequence of this clone aligns with the gene accession number as a point of reference only. However, individual transcript sequences of the same gene can differ through naturally occurring variations (e.g. polymorphisms), each with its own valid existence. This clone is substantially in agreement with the reference, but a complete review of all prevailing variants is recommended prior to use. [More info](#)

OTI Annotation: This clone was engineered to express the complete ORF with an expression tag. Expression varies depending on the nature of the gene.

Components: The ORF clone is ion-exchange column purified and shipped in a 2D barcoded Matrix tube containing 10ug of transfection-ready, dried plasmid DNA (reconstitute with 100 ul of water).

Reconstitution Method:

1. Centrifuge at 5,000xg for 5min.
2. Carefully open the tube and add 100ul of sterile water to dissolve the DNA.
3. Close the tube and incubate for 10 minutes at room temperature.
4. Briefly vortex the tube and then do a quick spin (less than 5000xg) to concentrate the liquid at the bottom.
5. Store the suspended plasmid at -20°C. The DNA is stable for at least one year from date of shipping when stored at -20°C.

RefSeq: [NM_138447.3](#)

RefSeq Size: 3565 bp

RefSeq ORF: 1503 bp

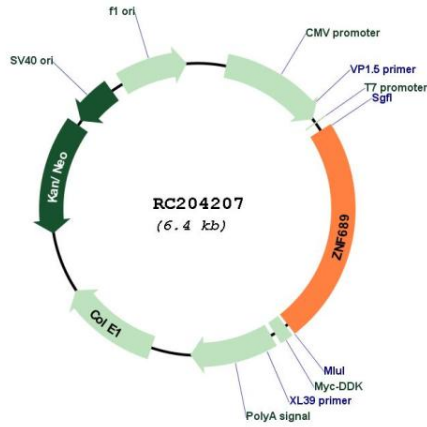
Locus ID: 115509

UniProt ID: [Q96CS4](#)

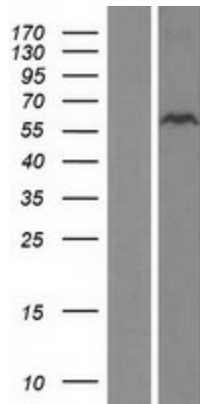
Cytogenetics: 16p11.2

Protein Families: Transcription Factors
 MW: 56.9 kDa
 Gene Summary: May be involved in transcriptional regulation.[UniProtKB/Swiss-Prot Function]

Product images:



Circular map for RC204207



Western blot validation of overexpression lysate (Cat# [LY408598]) using anti-DDK antibody (Cat# [TA50011-100]). Left: Cell lysates from untransfected HEK293T cells; Right: Cell lysates from HEK293T cells transfected with RC204207 using transfection reagent MegaTran 2.0 (Cat# [TT210002]).