

Product datasheet for **RC204201**

RHBDF1 (NM_022450) Human Tagged ORF Clone

Product data:

Product Type:	Expression Plasmids
Product Name:	RHBDF1 (NM_022450) Human Tagged ORF Clone
Tag:	Myc-DDK
Symbol:	RHBDF1
Synonyms:	C16orf8; Dist1; EGFR-RS; gene-89; gene-90; hDist1
Mammalian Cell Selection:	Neomycin
Vector:	pCMV6-Entry (PS100001)
E. coli Selection:	Kanamycin (25 ug/mL)



[View online »](#)

**ORF Nucleotide
Sequence:**

>RC204201 ORF sequence
 Red=Cloning site Blue=ORF Green=Tags(s)

TTTTGTAATACGACTCACTATAGGGCGGCCGGGAATTCGTCGACTGGATCCGGTACCGAGGAGATCTGCC
 GCC**CGGATCGCC**

ATGAGTGAGGCCCGCAGGGACAGCACGAGCAGCCTGCAGCGCAAGAAGCCACCCTGGCTAAAGCTGGACA
 TTCCTCTGCGGTGCCCTGACGGCAGAAGAGCCAGCTTCTGCAGCCCTGAGGCGACAGGCTTTCCT
 GAGGAGTGTGAGTATGCCAGCCGAGACAGCCACATCTTCCACCCACCATGAGCTCCGGCGGCCGGTG
 CTGCAACGCCAGACGTCCATCACACAGACCATCCGCAGGGGGACCGCCGACTGGTTTGGAGTGAGCAAGG
 ACAGTGACAGCACCCAGAAATGGCAGCGCAAGAGCATCCGTACTGCAGCCAGCGCTACGGGAAGCTGAA
 GCCCAGGTCTCCGGGAGCTGGACCTGCCAGCCAGGACAACGTGTGCTGACCAGCACCGAGACGCCA
 CCCCCACTCTACGTGGGGCCATGCCAGCTGGGCATGCAGAAGATCATAGACCCCTGGCCGTGGCCGTG
 CCTTCCGTGTGGCAGATGACACTGCGGAAGGCCTGAGTGCCCCACACACTCCCGTACGCCGGGTGCTGC
 CTCCTCTGCTCCTTCTCCAGCTCCCGCTCAGGTTTCCACGGCTCCCGCGGCCGCAAGCGAGAGTGC
 GTGGCCAAAGATGAGCTTCCGGGGCGCCGACGCGCTGATGAAAGGCCGCTCCGTTAGGGATGGCACCTTC
 GCCGGGACCGGCTCGAAGCTTCACTCCAGCTAGCTTCTGGAGGAGGACACAATGATTTCCCCGATGA
 GCTGGACACATCCTTCTTGGCCGGGAAGGTATCCTCCATGAAGAGCTGTCCACATACCCGGATGAAGTT
 TTCGAGTCCCCATCGGAGGCAGCGCTAAAGGACTGGGAGAAGGCACCGGAGCAGGCGGACCTCACCGGG
 GGGCCCTGGACCGCAGCGAGCTTGGAGCGAGCCACCTGATGCTGCCCTTGGAGCGAGGCTGGCGGAAGCA
 GAAGGAGGGCGCCGACGCCCCGACGCCAAGGTGCGGCTCCGACAGGAGGTGGTGAACCGCGGGGCCG
 CGACGGGGCCAGCGTATCGCGGTGCCGTGCGCAAGCTTTCGCCGGGAGAAGCGGCCGATAGGGCTGG
 GCATGGTGGGACGGCTACCAACCGCACCTACCGCAAGCGCATCGACAGCTTTCGTAAGCGCCAGATCGA
 GGACATGGACGACCACAGGCCCTTCTTCACTACTGGCTTACCTTCGTGCACTCGCTCGTACCATCCTA
 GCCGTGTGCATCTATGGCATCGCGCCCGTGGGCTTCTCGCAGCATGAGACGGTGGACTCGGTGCTGCGGA
 ACCGCGGGGTCTACGAGAAGCTCAAGTACGTGCAGCAGGAGAACTTCTGGATCGGGCCAGCTCGGAGGC
 CCTCATCCACCTGGGCGCAAGTTTTCGCCCTGCATGCGCCAGGACCCGAGGTGCACAGCTTATTTCG
 TCGGCGCGGAGCGGAGAAGCACTCCGCTGCTGCGTGCACACGAGGTGGGCTGCGTGCAGACCT
 CGGAGGAGGAGTGTCTCCACGCTGGCAGTGTGGGTGAAGTGGCCATCCATCCAGCGCCCCAGAGCT
 TGCGGGCCACAAGAGACAGTTTGGCTCTGTCTGCCACCAGGATCCAGGGTGTGTGATGAGCCCTCTCC
 GAAGACCTCATGAGTGGCCAGAAGACATACCAAGTGGCCGATCTGCACAAAAACAGCGCTGGGAACC
 ACACCAACCATCCCACATGGACTGTGTATCACAGGACGGCCCTGCTGCATTGGACCAAGGGCAGGTG
 TGAGATCACTCCCGGGAGTACTGTGACTTATGAGGGGCTACTTCCATGAGGAGGCCACGCTCTGCTCT
 CAGGTGCACTGCATGGATGATGTGTGGGCTCCTGCCTTTTCTCAACCCGAGGTGCCTGACCAGTTCT
 ACCGCCTGTGGTATCCCTTCTTCTGCACGCCGGGATCTTGCAGTGCCTGGTGTCCATCTGCTTCCAGAT
 GACTGTCTGCGGGACCTGGAGAAGCTGGCAGGCTGGCACCGCATAGCCATCATCTACCTGCTGAGTGGT
 GTCACCGGCAACCTGGCCAGTGCATCTTCTGCCATACCGAGCAGAGGTGGGCTCCTGCTGGCTCCCAGT
 TCGGCATCCTGGCTGCCTTCTCGTGGAGCTCTCCAGAGCTGGCAGATCCTGGCGGCCCTGGCGTGC
 CTTCTTCAAGCTGCTGGCTGTGGTGTCTTCTCTTACCTTTGGGCTGCTGCCGTGGATTGACAACCTTT
 GCCACATCTCGGGTTTCATCAGTGGCCTTCTCCTCTCCTTCGCTTCTTGGCCTACATCAGCTTTGGCA
 AGTTTCAGCTGTACCGAAACGCTGCCAGATCATCATTTTCAAGTGGTCTTCTGGGCTCCTGGCTGG
 CCTGGTGGTCTTCTACGTCTATCCTGTCCGCTGTGAGTGGTGTGAGTTCTCACCTGCATCCCTTC
 ACTGACAAGTTCTGTGAGAAGTACGAAGTGGACGCTCAGCTCCAC

ACGCGTACGCGGGCGCTCGAGCAGAAACTCATCTCAGAAGAGGATCTGGCAGCAATGATATCCTGGATT
 ACAAGGATGACGACGATAAGGTTTAA

Protein Sequence: >RC204201 protein sequence
 Red=Cloning site Green=Tags(s)

MSEARRDSTSSLQRKPPWLKLDIPSAVPLTAEEPSFLQPLRRQAFLRVSMPTAETAHISSPHHELRRPV
 LQRQTSITQTIRRGADWFGVSKDSDSTQKWQRKSI RHCSQRYGKLPQVLRDLPSQDNVSLTSTETP
 PPLYVGPCQLGMQKIIDPLARGRAFRVADDTAEGLSAPHTPVTPGAASLCSFSSSRSGFHRLPRRRKRES
 VAKMSFRAAAAALMKGRSVRDGTFRRARRRSFTPASFLEEDTTDFPDELDTFFAREGILHEELSTYPDEV
 FESPSEAALKDWEKAPEQADLTGGALDRSELERSHLMLPLERGWKQKEGAAAPQPKVRLRQEVVSTAGP
 RRGQRIAVPVRKLFAREKRPYGLGMVGRLTNRTYRKRIDSFVKRQIEDMDDHRPFFTYWLTFFVHSLVTIL
 AVCIYGIAPVGFSGHETVDSVLRNRGVYENKYYQQENFWIGPSSEAL IHLGAKFSPCMRQDPQVHSFIR
 SAREREKHSACVNRNDRSGCVQTSEECSSTLAVWKWPIHPSAPELAGHKRQFGSVCHQDPRVCDEPSS
 EDPHEWPEDITKWPICTKNSAGNHTNHPHMDCVITGRPCCIGTKGRCEITSREYCDFMRGYFHHEATLCS
 QVHCMDVCGLLPFLNPEVPDQFYRLWLSLFLHAGILHCLVSI CFQMTVLRDLEKLAGWHRIAI IYLLSG
 VTGNLASAIFLPYRAEVPAGSQFGILACLVELFQSWQILARPWRAFFKLLAVVLF LFTFGLLPWIDNF
 AHISGFI SGLFLSFAFLPYISFGKFDLYRKRQCI IIFQVVFLGLLAGLVVLFYVYPVRCWECEFLTCIPF
 TDKFCEKYELDAQLH

TRTRPLEQKLISEEDLAANDILDYKDDDDKV

Chromatograms: https://cdn.origene.com/chromatograms/mk6567_b03.zip

Restriction Sites: SgfI-MluI

Cloning Scheme:

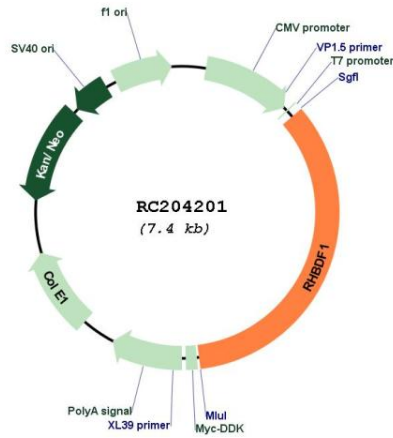
Cloning sites used for ORF Shuttling:



* The last codon before the Stop codon of the ORF

ACCN:	NM_022450
ORF Size:	2565 bp
OTI Disclaimer:	The molecular sequence of this clone aligns with the gene accession number as a point of reference only. However, individual transcript sequences of the same gene can differ through naturally occurring variations (e.g. polymorphisms), each with its own valid existence. This clone is substantially in agreement with the reference, but a complete review of all prevailing variants is recommended prior to use. More info
OTI Annotation:	This clone was engineered to express the complete ORF with an expression tag. Expression varies depending on the nature of the gene.
Components:	The ORF clone is ion-exchange column purified and shipped in a 2D barcoded Matrix tube containing 10ug of transfection-ready, dried plasmid DNA (reconstitute with 100 ul of water).
Reconstitution Method:	<ol style="list-style-type: none">1. Centrifuge at 5,000xg for 5min.2. Carefully open the tube and add 100ul of sterile water to dissolve the DNA.3. Close the tube and incubate for 10 minutes at room temperature.4. Briefly vortex the tube and then do a quick spin (less than 5000xg) to concentrate the liquid at the bottom.5. Store the suspended plasmid at -20°C. The DNA is stable for at least one year from date of shipping when stored at -20°C.
RefSeq:	NM_022450.2 , NP_071895.2
RefSeq Size:	3091 bp
RefSeq ORF:	2568 bp
Locus ID:	64285
UniProt ID:	Q96CC6
Cytogenetics:	16p13.3
Domains:	Rhomboid
Protein Families:	Druggable Genome, Protease, Transmembrane
MW:	97.4 kDa
Gene Summary:	Regulates ADAM17 protease, a sheddase of the epidermal growth factor (EGF) receptor ligands and TNF, thereby plays a role in sleep, cell survival, proliferation, migration and inflammation. Does not exhibit any protease activity on its own.[UniProtKB/Swiss-Prot Function]

Product images:



Circular map for RC204201



Coomassie blue staining of purified RHBDF1 protein (Cat# [TP304201]). The protein was produced from HEK293T cells transfected with RHBDF1 cDNA clone (Cat# RC204201) using MegaTran 2.0 (Cat# [TT210002]).