

Product datasheet for **RC204199**

Claudin 2 (CLDN2) (NM_020384) Human Tagged ORF Clone

Product data:

Product Type:	Expression Plasmids
Product Name:	Claudin 2 (CLDN2) (NM_020384) Human Tagged ORF Clone
Tag:	Myc-DDK
Symbol:	Claudin 2
Synonyms:	OAZON
Mammalian Cell Selection:	Neomycin
Vector:	pCMV6-Entry (PS100001)
E. coli Selection:	Kanamycin (25 ug/mL)
ORF Nucleotide Sequence:	>RC204199 ORF sequence Red=Cloning site Blue=ORF Green=Tags(s)

TTTTGTAATACGACTCACTATAGGGCGCCGGAATTCGTCGACTGGATCCGGTACCGAGGAGATCTGCC
GCC**CGATCGCC**

ATGGCCTCTCTTGGCCTCCAACCTGTGGGCTACATCCTAGGCCTTCTGGGGCTTTTGGGCACACTGGTTG
CCATGCTGCTCCCAGCTGGAAAACAAGTTCTTATGTCGGTGCCAGCATTGTGACAGCAGTTGGCTTCTC
CAAGGGCCTCTGGATGGAATGTGCCACACAGCACAGGCATCACCCAGTGTGACATCTATAGCACCCCTT
CTGGGCCTGCCCGCTGACATCCAGGCTGCCAGGCCATGATGGTACATCCAGTGAATCTCCTCCCTGG
CCTGCATTATCTCTGTGGTGGGCATGAGATGCACAGTCTTCTGCCAGGAATCCCGAGCCAAGACAGAGT
GGCGGTAGCAGGTGGAGTCTTTTTCATCCTTGGAGGCCTCCTGGGATTCAATCCTGTTGCCGTGAATCTT
CATGGGATCCTACGGGACTTCTACTCACCCTGGTGCCTGACAGCATGAAATTTGAGATTGGAGAGGCTC
TTTACTTGGGCATTATTTCTTCCCTGTTCTCCCTGATAGCTGGAATCATCCTCTGCTTTTCTGCTCATC
CCAGAGAAATCGCTCCAACCTACTACGATGCCTACCAAGCCCAACCTTTGCCACAAGGAGCTCTCCAAGG
CCTGGTCAACCTCCCAAAGTCAAGAGTGAGTTCAATTCCTACAGCCTGACAGGGTATGTG

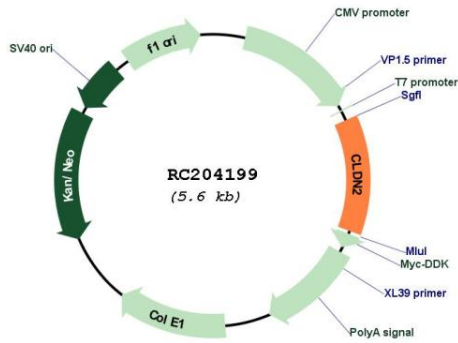
ACGCGTACGCGGGCCGCTCGAGCAGAACTCATCTCAGAAGAGGATCTGGCAGCAAATGATATCCTGGATT
ACAAGGATGACGACGATAAGGTTTAA



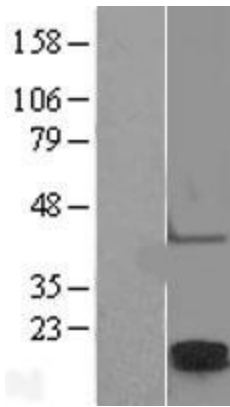
[View online »](#)

Reconstitution Method:	<ol style="list-style-type: none">1. Centrifuge at 5,000xg for 5min.2. Carefully open the tube and add 100ul of sterile water to dissolve the DNA.3. Close the tube and incubate for 10 minutes at room temperature.4. Briefly vortex the tube and then do a quick spin (less than 5000xg) to concentrate the liquid at the bottom.5. Store the suspended plasmid at -20°C. The DNA is stable for at least one year from date of shipping when stored at -20°C.
Note:	Plasmids are not sterile. For experiments where strict sterility is required, filtration with 0.22um filter is required.
RefSeq:	NM_020384.4
RefSeq Size:	2998 bp
RefSeq ORF:	693 bp
Locus ID:	9075
UniProt ID:	P57739
Cytogenetics:	Xq22.3
Protein Families:	Transmembrane
Protein Pathways:	Cell adhesion molecules (CAMs), Leukocyte transendothelial migration, Tight junction
MW:	24.5 kDa
Gene Summary:	This gene product belongs to the claudin protein family whose members have been identified as major integral membrane proteins localized exclusively at tight junctions. Claudins are expressed in an organ-specific manner and regulate tissue-specific physiologic properties of tight junctions. This protein is expressed in the intestine. Alternatively spliced transcript variants with different 5' untranslated region have been found for this gene.[provided by RefSeq, Jan 2010]

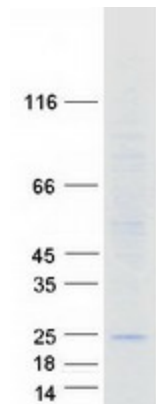
Product images:



Circular map for RC204199



Western blot validation of overexpression lysate (Cat# [LY402780]) using anti-DDK antibody (Cat# [TA50011-100]). Left: Cell lysates from untransfected HEK293T cells; Right: Cell lysates from HEK293T cells transfected with RC204199 using transfection reagent MegaTran 2.0 (Cat# [TT210002]).



Coomassie blue staining of purified CLDN2 protein (Cat# [TP304199]). The protein was produced from HEK293T cells transfected with CLDN2 cDNA clone (Cat# RC204199) using MegaTran 2.0 (Cat# [TT210002]).