

Product datasheet for **RC204198**

ZBTB2 (NM_020861) Human Tagged ORF Clone

Product data:

Product Type:	Expression Plasmids
Product Name:	ZBTB2 (NM_020861) Human Tagged ORF Clone
Tag:	Myc-DDK
Symbol:	ZBTB2
Synonyms:	ZNF437
Mammalian Cell Selection:	Neomycin
Vector:	pCMV6-Entry (PS100001)
E. coli Selection:	Kanamycin (25 ug/mL)



[View online »](#)

ORF Nucleotide Sequence:

>RC204198 ORF sequence
 Red=Cloning site Blue=ORF Green=Tags(s)

TTTTGTAATACGACTCACTATAGGGCGGCCGGAATTCGTCGACTGGATCCGGTACCGAGGAGATCTGCC
 GCC**CGGATCGCC**

ATGGATTTGGCCAACCATGGACTTATTCTACTGCAACAGTTAAACGCTCAGCGAGAGTTGGTTTCTGT
 GTGACTGCACGGTTGCAATCGGGCATGTATACTTCAAGGCACACAAATCAGTTCTTGCTTATTCTCAA
 TTACTTTAAGATGTTGTTTGTCCATCAGACCAGTGAGTGTGCCGCTTAAACCAACTGACATACAGCCC
 GACATCTTCAGCTATCTTTACACTTGTGTACTGTTGTTGTTGTTGTTGTTGTTGTTGTTGTTGTTGTT
 GATTAGAACAGGGCATCAAGTTTCTGCACGCCTACCCGCTCATTAGGAAGCCAGCCTCGCCAGCCAGGG
 AGCCTTTTCTCACCTGACCAAGTTTCCCACTGGCTTCTTATTGTATGGCATTGAGATTGAGATCAT
 CAGTTGAGACAAGCCACCAAGATTGCTTACGACCTGAAAACTCGGGCAGATCCACGGCCACAGACCT
 CCAGGATAAGCCAGGAGCAGTCCCTGAGGCCTCACAGCTCTCCAGCTGACTTCAAATCTGGCCCAGGT
 GAATCGGACAAAATGACTCCCTCAGACCCCTGCAGACCTCGTGTCTCCAGAATTGTTCCACTCCT
 GTTCTCCCTCCTCCCGGGGAGGAGACCAATCTGGAAGCATCTTCTCCGATGAGCAGCTGCGTCCC
 TCACAATAGCCCACGTAAGCCAAGCATCATGAAGAGGAATGGGAGCTTCCAAAGTACTATGCCTGCCA
 CCTGTGTGGACGGCGCTTCACTCTCCGGAGCAGCTTACGTGAACACCTCCAGATCCACACAGGAGTACCT
 TTCACATCTAGCCAACAGGGAGAAAAGTCGCGTCCCCTGACTCTCTGTAGCAATGCAGCTGACCTCGGGA
 AAGATGCCATGGAAGTGCCTGAAGCCGGGATGATAAGTGACAGTGAGCTGCAGCAGATCTCTGATTCTCC
 CATCATCGATGGGCAGCAGCAGTCGAAACCCACCCCTCAGACATTGCTGACATTGACAACCTGGAG
 CAGGCCGACCAGGAGAGGGAGGTGAAGAGGCGGAAGTACGAGTGCACAATATGTGGACGCAAAATTTATCC
 AGAAAAGCCACTGGAGGGAACACATGTACATACACACCCGGGAAGCCTTTCAAGTGCAGCACTTGTGACAA
 AAGCTTTTGCAGGGCAACCAGGCTGCCCGCCAGGTGTGCTCAACCAGAGCATCGACACTTACACCATG
 GTGGACAAAACAGACTCTGGAACCTGCACATTTGAGGAAGGGAGTCAGATGGACAACATGCTGGTCAAAA
 CAAACAAACCCTACAAATGCAACTTGTGTGACAAAACATTCTCCACTCCCAATGAGGTTGTTAAACATTC
 ATGCCAAAACCAGAACTCGGATGTTTTTGCCTAGACGAAGGGCGATCCATTCTCTGGCAGTGGGGAC
 TCGGAAGTAACGGAGCCTGACCACCCAGTGTAGCTTCCATCAAAAAGGAACAAGAAACCGTCTTACTAG
 AC

ACGCGTACGCGGCCGCTCGAGCAGAAACTCATCTCAGAAGAGGATCTGGCAGCAAATGATATCCTGGATT
 ACAAGGATGACGACGATAAGGTTTAA

Protein Sequence:

>RC204198 protein sequence
 Red=Cloning site Green=Tags(s)

MDLANHGLILLQQLNAQREFGLCDCTVAIGDVYFKAHKSVLASFSNYFKMLFVHQTSECVRLKPTDIQP
 DIFSYLLHLMYTGKMAPQLIDPVRLEQGIKFLHAYPLIQEASLASQGAFLSHPDQVFPPLASSLYGIQIADH
 QLRQATKIASAPEKLGDRPRPQTSRISQEQVPEASQLSQTLSNLAQVNRNMTSPDPLQTSLSPELVSTP
 VPPPPGEEETNLEASSSDEQPASLTIAHVKPSIMKRNGSFPKYYACHLCGRRFTLRSSLREHLQIHTGVP
 FTSSQQGESRVPLTLCNAADLGKDAMEVPEAGMISDSELQHISDSPIIDGQQQSETPPPSDIADIDNLE
 QADQEREVKKRKYECTICGRKFIQKSHWREHMYIHTGKPFKSTCDKSFCRANQAARHVCLNQSIDTYTM
 VDKQTLLELCTFEEGSQMDNMLVQTNKPYKCNLCKTFSTPNEVVKHSCQNQNSDVFALDEGRSILLGSGD
 SEVTEPDHPVLASIKKEQETVLLD

TRTRPLEQKLISEEDLAANDILDYKDDDDKV

Chromatograms:

https://cdn.origene.com/chromatograms/mk6565_a05.zip

Restriction Sites:

Sgfl-MluI

Cloning Scheme:

ACCN: NM_020861

ORF Size: 1542 bp

OTI Disclaimer: Due to the inherent nature of this plasmid, standard methods to replicate additional amounts of DNA in E. coli are highly likely to result in mutations and/or rearrangements. Therefore, OriGene does not guarantee the capability to replicate this plasmid DNA. Additional amounts of DNA can be purchased from OriGene with batch-specific, full-sequence verification at a reduced cost. Please contact our customer care team at custsupport@origene.com or by calling 301.340.3188 option 3 for pricing and delivery.

The molecular sequence of this clone aligns with the gene accession number as a point of reference only. However, individual transcript sequences of the same gene can differ through naturally occurring variations (e.g. polymorphisms), each with its own valid existence. This clone is substantially in agreement with the reference, but a complete review of all prevailing variants is recommended prior to use. [More info](#)

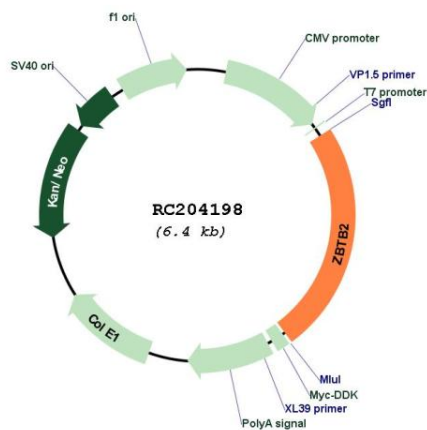
OTI Annotation: This clone was engineered to express the complete ORF with an expression tag. Expression varies depending on the nature of the gene.

Components: The ORF clone is ion-exchange column purified and shipped in a 2D barcoded Matrix tube containing 10ug of transfection-ready, dried plasmid DNA (reconstitute with 100 ul of water).

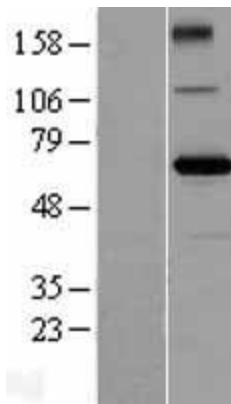
- Reconstitution Method:**
1. Centrifuge at 5,000xg for 5min.
 2. Carefully open the tube and add 100ul of sterile water to dissolve the DNA.
 3. Close the tube and incubate for 10 minutes at room temperature.
 4. Briefly vortex the tube and then do a quick spin (less than 5000xg) to concentrate the liquid at the bottom.
 5. Store the suspended plasmid at -20°C. The DNA is stable for at least one year from date of shipping when stored at -20°C.

RefSeq: [NM_020861.3](#)

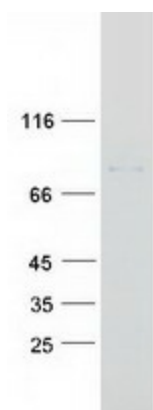
RefSeq Size: 3105 bp
 RefSeq ORF: 1545 bp
 Locus ID: 57621
 UniProt ID: [Q8N680](#)
 Cytogenetics: 6q25.1
 Domains: BTB, zf-C2H2
 Protein Families: Transcription Factors
 MW: 57.3 kDa
 Gene Summary: May be involved in transcriptional regulation.[UniProtKB/Swiss-Prot Function]

Product images:


Circular map for RC204198



Western blot validation of overexpression lysate (Cat# [LY412230]) using anti-DDK antibody (Cat# [TA50011-100]). Left: Cell lysates from untransfected HEK293T cells; Right: Cell lysates from HEK293T cells transfected with RC204198 using transfection reagent MegaTran 2.0 (Cat# [TT210002]).



Coomassie blue staining of purified ZBTB2 protein (Cat# [TP304198]). The protein was produced from HEK293T cells transfected with ZBTB2 cDNA clone (Cat# RC204198) using MegaTran 2.0 (Cat# [TT210002]).