

## Product datasheet for **RC204197**

### HOXB6 (NM\_018952) Human Tagged ORF Clone

#### Product data:

Product Type:	Expression Plasmids
Product Name:	HOXB6 (NM_018952) Human Tagged ORF Clone
Tag:	Myc-DDK
Symbol:	HOXB6
Synonyms:	Hox-2.2; HOX2; HOX2B; HU-2
Mammalian Cell Selection:	Neomycin
Vector:	pCMV6-Entry (PS100001)
E. coli Selection:	Kanamycin (25 ug/mL)
ORF Nucleotide Sequence:	>RC204197 ORF sequence Red=Cloning site Blue=ORF Green=Tags(s)

TTTTGTAATACGACTCACTATAGGGCGCCGGGAATTCGTCGACTGGATCCGGTACCGAGGAGATCTGCCGCC**CGATCGCC**

ATGAGTTCCTATTTTCGTGAACTCCACCTTCCCCGTCACCTCTGGCCAGCGGGCAGGAGTCCTTCTGGGCCAGCTACCGCTCTATTCGTCGGGCTATGCGGACCCGCTGAGACATTACCCCGCCCTACGGGCCAGGGCCGGCCAGGACAAGGGCTTGGCACTTCTCCTATTACCCCGCGGGCGGGTGGCTACGGCCGAGCGGCCCTGCGACTACGGGCCGGCGCCGCTTCTACCGCGAGAAAGAGTCGGCCTGCGCACTCTCCGGCGCCACGAGCAGCCCCGTTCCACCCGAGCCGCGGAAGTCGGACTGCGCGCAGGACAAGAGCGTGTTCGGCGAGACAGAAGAGCAGAAGTGTCCACTCCGGTCTACCCGTGGATGCAGCGGATGAATTCGTGCAACAGTTCTCCTTTGGGCCAGCGGGCCGGCGAGGCCGCCAGACATACACAGTTACCAGACGCTGGAGCTGGAGAAGGAGTTTCACTACAATCGCTACCTGACGCGGGCGGGCGCATCGAGATCGCGCACGCCCTGTGCCTGACGGAGAGGAGATCAAGATATGGTTCCAGAACCAGCGCATGAAGTGGAAGGAGAGCAAACTGCTCAGCGCTCTCAGCTCAGTCCGAGGAGGAGGAAGAAAAACAGGCCGAG

**ACGCGT**ACGCGGGCCGCTCGAGCAGAACTCATCTCAGAAGAGGATCTGGCAGCAAATGATATCTGGATTACAAGGATGACGACGATAAGGTTTAA



[View online »](#)

**Protein Sequence:** >RC204197 protein sequence  
Red=Cloning site Green=Tags(s)

MSSYFVNSTFPVTLASGQESFLGQLPLYSSGYADPLRHYPAPYGPQKGFATSSYPPAGGGYGRAA  
 PCDYGPAPAFYREKESACALSGADEQPPFHPEPRKSDCAQDKSVFGETEEQKSTPVYPMQRMNSNSS  
 SFGPSGRRGRQTYTRYQTLELEKEFHYNRYL TRRRRIEIAHALCLTERQIKIWFQNRMRMKWKESKLLSA  
 SQLSAEEEEEKQAE

TRTRPLEQKLISEEDLAANDILDYKDDDDKV

**Chromatograms:** [https://cdn.origene.com/chromatograms/mk6059\\_b05.zip](https://cdn.origene.com/chromatograms/mk6059_b05.zip)

**Restriction Sites:** SgfI-MluI

**Cloning Scheme:**



**ACCN:** NM\_018952

**ORF Size:** 672 bp

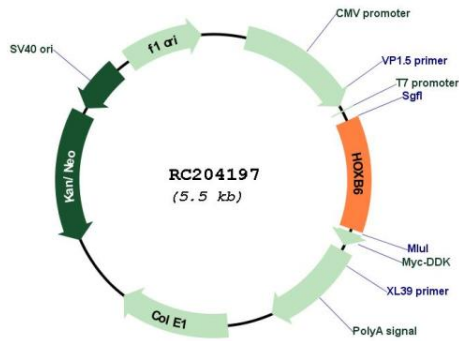
**OTI Disclaimer:** Due to the inherent nature of this plasmid, standard methods to replicate additional amounts of DNA in E. coli are highly likely to result in mutations and/or rearrangements. Therefore, OriGene does not guarantee the capability to replicate this plasmid DNA. Additional amounts of DNA can be purchased from OriGene with batch-specific, full-sequence verification at a reduced cost. Please contact our customer care team at [custsupport@origene.com](mailto:custsupport@origene.com) or by calling 301.340.3188 option 3 for pricing and delivery.

The molecular sequence of this clone aligns with the gene accession number as a point of reference only. However, individual transcript sequences of the same gene can differ through naturally occurring variations (e.g. polymorphisms), each with its own valid existence. This clone is substantially in agreement with the reference, but a complete review of all prevailing variants is recommended prior to use. [More info](#)

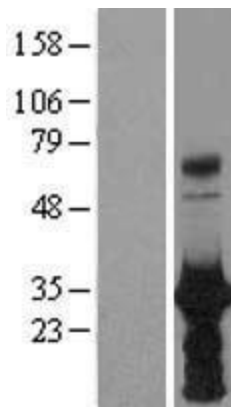
**OTI Annotation:** This clone was engineered to express the complete ORF with an expression tag. Expression varies depending on the nature of the gene.

<b>Components:</b>	The ORF clone is ion-exchange column purified and shipped in a 2D barcoded Matrix tube containing 10ug of transfection-ready, dried plasmid DNA (reconstitute with 100 ul of water).
<b>Reconstitution Method:</b>	<ol style="list-style-type: none"><li>1. Centrifuge at 5,000xg for 5min.</li><li>2. Carefully open the tube and add 100ul of sterile water to dissolve the DNA.</li><li>3. Close the tube and incubate for 10 minutes at room temperature.</li><li>4. Briefly vortex the tube and then do a quick spin (less than 5000xg) to concentrate the liquid at the bottom.</li><li>5. Store the suspended plasmid at -20°C. The DNA is stable for at least one year from date of shipping when stored at -20°C.</li></ol>
<b>RefSeq:</b>	<u><a href="#">NM_018952.5</a></u>
<b>RefSeq Size:</b>	1686 bp
<b>RefSeq ORF:</b>	675 bp
<b>Locus ID:</b>	3216
<b>UniProt ID:</b>	<u><a href="#">P17509</a></u>
<b>Cytogenetics:</b>	17q21.32
<b>Domains:</b>	homeobox
<b>Protein Families:</b>	Transcription Factors
<b>MW:</b>	25.4 kDa
<b>Gene Summary:</b>	This gene is a member of the Antp homeobox family and encodes a protein with a homeobox DNA-binding domain. It is included in a cluster of homeobox B genes located on chromosome 17. The encoded protein functions as a sequence-specific transcription factor that is involved in development, including that of lung and skin, and has been localized to both the nucleus and cytoplasm. Altered expression of this gene or a change in the subcellular localization of its protein is associated with some cases of acute myeloid leukemia and colorectal cancer. [provided by RefSeq, Jul 2008]

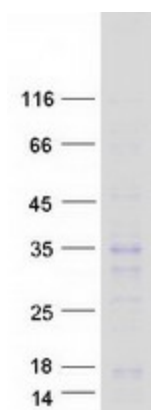
Product images:



Circular map for RC204197



Western blot validation of overexpression lysate (Cat# [LY412857]) using anti-DDK antibody (Cat# [TA50011-100]). Left: Cell lysates from untransfected HEK293T cells; Right: Cell lysates from HEK293T cells transfected with RC204197 using transfection reagent MegaTran 2.0 (Cat# [TT210002]).



Coomassie blue staining of purified HOXB6 protein (Cat# [TP304197]). The protein was produced from HEK293T cells transfected with HOXB6 cDNA clone (Cat# RC204197) using MegaTran 2.0 (Cat# [TT210002]).