

## Product datasheet for **RC204194**

### Rad6 (UBE2A) (NM\_003336) Human Tagged ORF Clone

#### Product data:

**Product Type:** Expression Plasmids  
**Product Name:** Rad6 (UBE2A) (NM\_003336) Human Tagged ORF Clone  
**Tag:** Myc-DDK  
**Symbol:** Rad6  
**Synonyms:** HHR6A; MRXS30; MRXSN; RAD6A; UBC2  
**Mammalian Cell Selection:** Neomycin  
**Vector:** pCMV6-Entry (PS100001)  
**E. coli Selection:** Kanamycin (25 ug/mL)  
**ORF Nucleotide Sequence:** >RC204194 ORF sequence  
 Red=Cloning site Blue=ORF Green=Tags(s)

TTTTGTAATACGACTCACTATAGGGCGGCCGGAATTCGTCGACTGGATCCGGTACCGAGGAGATCTGCC  
 GCC**CGATCGCC**

ATGTCCACCCCGGCTCGGCGGCCTCATGCGGGACTTCAAGAGGTTGCAGGAGGATCCTCCAGCCGGAG  
 TCAGCGGGGCTCCGTCCGAGAACAACATAATGGTGTGGAACGCGGTCAATTTTCGGCCTGAAGGGACCCC  
 GTTTGAGGATGGAACATTTAACTTACAATAGAATTCACTGAAGAATATCCAAATAAACACCTACAGTT  
 AGATTTGTCTCTAAGATGTTCCATCCAAATGTCTATGCAGATGGTAGTATATGTCTGGACATACTCAGA  
 ACCGTTGGAGTCCAACCTATGATGTGTCTCCATTCTAACATCCATACAGTCTCTGTTGGATGAACCCAA  
 TCCCAATAGTCCAGCAAACAGCCAGGCTGCTCAGCTGTACCAGGAGAACAACGGGAATATGAAAAGCGT  
 GTTCTGCAATAGTAGAACAAGCTGGCGTGATTGT

**ACGCGT**ACGCGGCCGCTCGAGCAGAACTCATCTCAGAAGAGGATCTGGCAGCAAATGATATCCTGGATT  
 ACAAGGATGACGACGATAAGGTTTAA

**Protein Sequence:** >RC204194 protein sequence  
 Red=Cloning site Green=Tags(s)

MSTPARRRLMRDFKRLQEDPPAGVSGAPSENNIMVWNAVIFGPEGTPFEDGTFKLTIEFTEEYPNKPPTV  
 RFVSKMFHPNVYADGSICLDILQNRWSPTYDVSSILTSIQSLLEPNPNPANSQAAQLYQENKREYEKR  
 VSAIVEQSWRDC

**TR**TRPLEQK**LI**SEEDLAANDILDYKDDDDKV

**Chromatograms:** [https://cdn.origene.com/chromatograms/mk6432\\_b03.zip](https://cdn.origene.com/chromatograms/mk6432_b03.zip)



[View online »](#)

Restriction Sites: SgfI-MluI

Cloning Scheme:



ACCN: NM\_003336

ORF Size: 456 bp

OTI Disclaimer: The molecular sequence of this clone aligns with the gene accession number as a point of reference only. However, individual transcript sequences of the same gene can differ through naturally occurring variations (e.g. polymorphisms), each with its own valid existence. This clone is substantially in agreement with the reference, but a complete review of all prevailing variants is recommended prior to use. [More info](#)

OTI Annotation: This clone was engineered to express the complete ORF with an expression tag. Expression varies depending on the nature of the gene.

Components: The ORF clone is ion-exchange column purified and shipped in a 2D barcoded Matrix tube containing 10ug of transfection-ready, dried plasmid DNA (reconstitute with 100 ul of water).

Reconstitution Method:

1. Centrifuge at 5,000xg for 5min.
2. Carefully open the tube and add 100ul of sterile water to dissolve the DNA.
3. Close the tube and incubate for 10 minutes at room temperature.
4. Briefly vortex the tube and then do a quick spin (less than 5000xg) to concentrate the liquid at the bottom.
5. Store the suspended plasmid at -20°C. The DNA is stable for at least one year from date of shipping when stored at -20°C.

RefSeq: [NM\\_003336.4](#)

RefSeq Size: 1878 bp

RefSeq ORF: 459 bp

Locus ID: 7319

UniProt ID: [P49459](#)

Cytogenetics: Xq24

Domains: UBCc

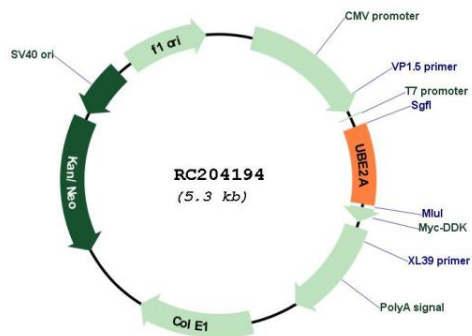
Protein Families: Druggable Genome

Protein Pathways: Ubiquitin mediated proteolysis

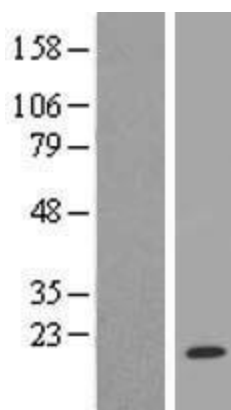
MW: 17.3 kDa

**Gene Summary:** The modification of proteins with ubiquitin is an important cellular mechanism for targeting abnormal or short-lived proteins for degradation. Ubiquitination involves at least three classes of enzymes: ubiquitin-activating enzymes, ubiquitin-conjugating enzymes, and ubiquitin-protein ligases. This gene encodes a member of the E2 ubiquitin-conjugating enzyme family. This enzyme is required for post-replicative DNA damage repair, and may play a role in transcriptional regulation. Mutations in this gene are associated with cognitive disability. Alternative splicing results in multiple transcript variants. [provided by RefSeq, Aug 2013]

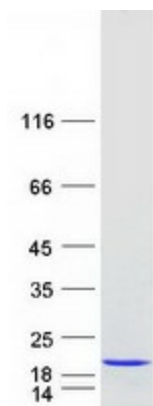
**Product images:**



Circular map for RC204194



Western blot validation of overexpression lysate (Cat# [LY418754]) using anti-DDK antibody (Cat# [TA50011-100]). Left: Cell lysates from untransfected HEK293T cells; Right: Cell lysates from HEK293T cells transfected with RC204194 using transfection reagent MegaTran 2.0 (Cat# [TT210002]).



Coomassie blue staining of purified UBE2A protein (Cat# [TP304194]). The protein was produced from HEK293T cells transfected with UBE2A cDNA clone (Cat# RC204194) using MegaTran 2.0 (Cat# [TT210002]).