

Product datasheet for RC204192

I-Myc (MYCL) (NM_005376) Human Tagged ORF Clone

Product data:

Product Type:	Expression Plasmids
Product Name:	I-Myc (MYCL) (NM_005376) Human Tagged ORF Clone
Tag:	Myc-DDK
Symbol:	I-Myc
Synonyms:	bHLHe38; L-Myc; LMYC; MYCL1
Mammalian Cell Selection:	Neomycin
Vector:	pCMV6-Entry (PS100001)
E. coli Selection:	Kanamycin (25 ug/mL)
ORF Nucleotide Sequence:	>RC204192 ORF sequence Red=Cloning site Blue=ORF Green=Tags(s)

TTTTGTAATACGACTCACTATAGGGCGCCGGGAATTCGTCGACTGGATCCGGTACCGAGGAGATCTGCC
GCC**CGATCGCC**

ATGGACTACGACTCGTACCAGCACTATTTCTACGACTATGACTGCGGGGAGGATTTCTACCGCTCCACGG
CGCCAGCGAGGACATCTGGAAGAAATTCGAGCTGGTCCATCGCCCCACGTCGCCGCCCTGGGGCTT
GGGTCCCGGCGCAGGGGACCCGGCCCCGGGATTGGTCCCGGAGCCGTGGCCCGAGGGTGCACCGGA
GACGAAGCGGAATCCCGGGCCACTCGAAAGGCTGGGGCAGGAACACGCCTCCATCATAACCGCTGACT
GCATGTGGAGCGCTTCTCGGCCGGGAACGGCTGGAGAGAGCTGTGAGCGACCGCTCGCTCCTGGCGC
GCCCGGGGAACCCGCCAAGGCGTCCGCCGCCCGGACTGCACTCCCAGCCTCGAAGCCGGCAACCCG
GCGCCCGCCGCCCTGTCCGCTGGGCGAACCAAGACCCAGGCCTGCTCCGGGTCCGAGAGCCCAAGCG
ACTCGGTAAGGACCTCCCCGAGCCATCCAAGAGGGGGCCACCCCATGGGTGGCCAAAGCTCGCCCTG
CCTGAGGTCAGGCATTGGCTCTTCTCAAGCTCTTGGCCATCTCCGCCTCTTTTGGC

ACGCGTACGCGGCCGCTCGAGCAGAACTCATCTCAGAAGAGGATCTGGCAGCAATGATATCCTGGATT
ACAAGGATGACGACGATAAGGTTTAA

Protein Sequence:	>RC204192 protein sequence Red=Cloning site Green=Tags(s)
-------------------	--

MDYDSYQHYFYDYDCGEDFYRSTAPSEDIWKKFELVPSPTSPPWGLGPGAGDPAPGIGPPEPWGGCTG
DEAESRGHSGWGRNYASIIRRDCMWSGFSARERLERAVSDRLAPGAPRGNPPKASAAPDCTPSLEAGNP
APAAPCPLGEPKTQACSGSESPSDSGKDLPEPSKRGPPhGWPKLCPCLRSIGISSQALGPSPLFG

TRTRPLEQKLISEEDLAANDILDYKDDDDKV

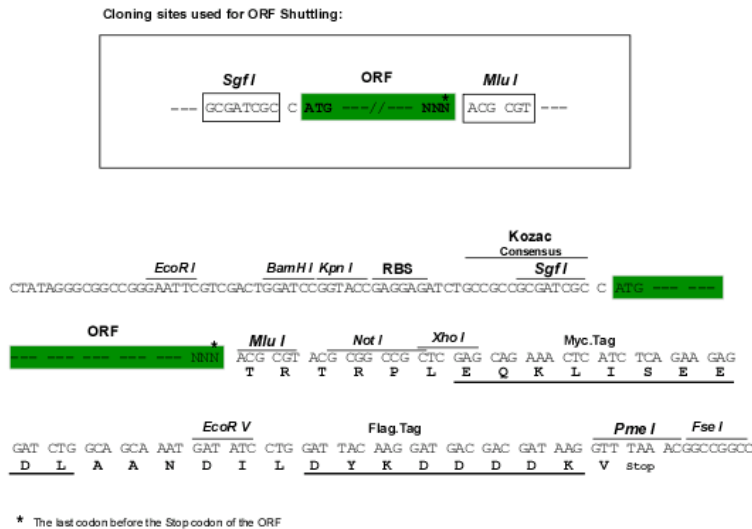


[View online »](#)

Chromatograms: https://cdn.origene.com/chromatograms/mk6431_c11.zip

Restriction Sites: SgfI-MluI

Cloning Scheme:



ACCN: NM_005376

ORF Size: 618 bp

OTI Disclaimer: The molecular sequence of this clone aligns with the gene accession number as a point of reference only. However, individual transcript sequences of the same gene can differ through naturally occurring variations (e.g. polymorphisms), each with its own valid existence. This clone is substantially in agreement with the reference, but a complete review of all prevailing variants is recommended prior to use. [More info](#)

OTI Annotation: This clone was engineered to express the complete ORF with an expression tag. Expression varies depending on the nature of the gene.

Components: The ORF clone is ion-exchange column purified and shipped in a 2D barcoded Matrix tube containing 10ug of transfection-ready, dried plasmid DNA (reconstitute with 100 ul of water).

Reconstitution Method:

1. Centrifuge at 5,000xg for 5min.
2. Carefully open the tube and add 100ul of sterile water to dissolve the DNA.
3. Close the tube and incubate for 10 minutes at room temperature.
4. Briefly vortex the tube and then do a quick spin (less than 5000xg) to concentrate the liquid at the bottom.
5. Store the suspended plasmid at -20°C. The DNA is stable for at least one year from date of shipping when stored at -20°C.

RefSeq: [NM_005376.3](#), [NP_005367.1](#)

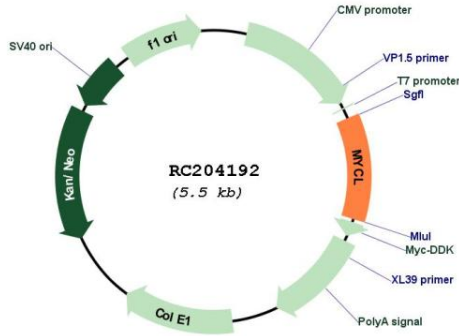
RefSeq Size: 2050 bp

RefSeq ORF: 711 bp

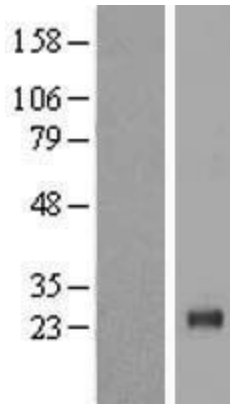
Locus ID: 4610

UniProt ID: [P12524](#)
 Cytogenetics: 1p34.2
 Domains: Myc_N_term
 Protein Families: Druggable Genome, Transcription Factors
 MW: 21.8 kDa

Product images:



Circular map for RC204192



Western blot validation of overexpression lysate (Cat# [LY417333]) using anti-DDK antibody (Cat# [TA50011-100]). Left: Cell lysates from untransfected HEK293T cells; Right: Cell lysates from HEK293T cells transfected with RC204192 using transfection reagent MegaTran 2.0 (Cat# [TT210002]).