

## Product datasheet for **RC204188**

### IGFBP4 (NM\_001552) Human Tagged ORF Clone

#### Product data:

Product Type:	Expression Plasmids
Product Name:	IGFBP4 (NM_001552) Human Tagged ORF Clone
Tag:	Myc-DDK
Symbol:	IGFBP4
Synonyms:	BP-4; HT29-IGFBP; IBP4; IGFBP-4
Mammalian Cell Selection:	Neomycin
Vector:	pCMV6-Entry (PS100001)
E. coli Selection:	Kanamycin (25 ug/mL)
ORF Nucleotide Sequence:	>RC204188 ORF sequence Red=Cloning site Blue=ORF Green=Tags(s)

TTTTGTAATACGACTCACTATAGGGCGCCGGGAATTCGTCGACTGGATCCGGTACCGAGGAGATCTGCC  
GCC**CGATCGCC**

ATGCTGCCCTCTGCCTCGTGGCCGCCCTGCTGCTGGCCGCCGGGCCGGCCGAGCCTGGGCGACGAAG  
CCATCCACTGCCCGCCCTGCTCCGAGGAGAAGCTGGCGCGCTGCCGCCCCCGTGGGCTGCGAGGAGCT  
GGTGGAGAGCCGGGCTGCGGCTGTTGCGCCACTTGCGCCCTGGGCTTGGGGATGCCCTGCGGGGTGTAC  
ACCCCCGTTGCGGCTCGGGCTGCGCTGCTACCCGCCCCGAGGGGTGGAGAAGCCCTGCACACACTGA  
TGCACGGCAAGGCGTGTGCATGGAGCTGGCGGAGATCGAGGCCATCCAGGAAAGCCTGCAGCCCTCTGA  
CAAGGACGAGGGTGACCACCCCAACAACAGCTTCAGCCCTGTAGCGCCATGACCGCAGGTGCCTGCAG  
AAGCACTTCGCCAAAATTCGAGACCGGAGCACCAGTGGGGCAAGATGAAGGTCAATGGGGCGCCCCGGG  
AGGATGCCCGGCTGTGCCCGAGGCTCCTGCCAGAGCGAGCTGCACCGGCGCTGGAGCGGCTGGCCGC  
TTCACAGAGCCGCACCCAGGACCTCTACATCATCCCCATCCCCAACTGCGACCGCAACGGCAACTTC  
CACCCCAAGCAGTGTACCCAGCTCTGGATGGCAGCGTGGCAAGTGTGGTGTGTGGACCGGAAGACGG  
GGTGAAGCTTCCGGGGGCTGGAGCCAAAGGGGAGCTGGACTGCCACCAGCTGGCTGACAGCTTTCG  
AGAG

**ACGCGT**ACGCGGCCGCTCGAGCAGAACTCATCTCAGAAGAGGATCTGGCAGCAAATGATATCCTGGATT  
ACAAGGATGACGACGATAAGGTTTAA



[View online »](#)

**Protein Sequence:** >RC204188 protein sequence  
Red=Cloning site Green=Tags(s)

MLPLCLVAALLLAAGPGPSLGDEAIHCPPCSEEKLA RCRPPV GCEELVREPGCGCCATCALGLGMPGCVY  
 TPRCGSLRCYPPRGVEKPLHTLMHGQGVCMELAEIEAIQESLQPSDKDEGDHPNNSFSPCSAHDRRLCQ  
 KHFAKIRDRSTSGGKMKVNGAPREDARVPQGSQSELHRALERLAASQSRTHEDLYIIPNCDNRNGNF  
 HPKQCHPALDQQRGKCWCVDRKTGVKLPGGLEPKGELDCHQLADSFRE

TRTRPLEQKLISEEDLAANDILDYKDDDDKV

**Chromatograms:** [https://cdn.origene.com/chromatograms/mk6288\\_a03.zip](https://cdn.origene.com/chromatograms/mk6288_a03.zip)

**Restriction Sites:** SgfI-MluI

**Cloning Scheme:**

Cloning sites used for ORF Shuttling:



\* The last codon before the Stop codon of the ORF

**ACCN:** NM\_001552

**ORF Size:** 774 bp

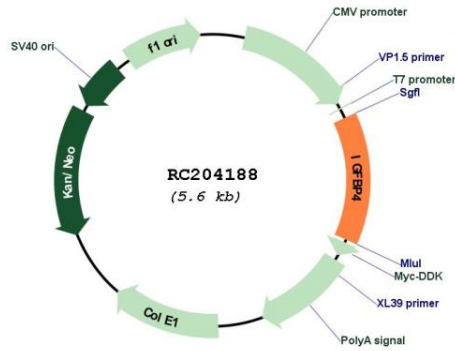
**OTI Disclaimer:** The molecular sequence of this clone aligns with the gene accession number as a point of reference only. However, individual transcript sequences of the same gene can differ through naturally occurring variations (e.g. polymorphisms), each with its own valid existence. This clone is substantially in agreement with the reference, but a complete review of all prevailing variants is recommended prior to use. [More info](#)

**OTI Annotation:** This clone was engineered to express the complete ORF with an expression tag. Expression varies depending on the nature of the gene.

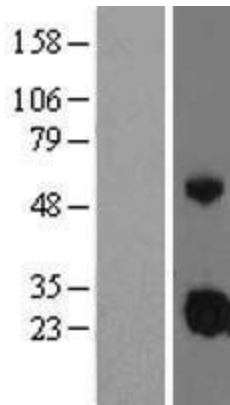
**Components:** The ORF clone is ion-exchange column purified and shipped in a 2D barcoded Matrix tube containing 10ug of transfection-ready, dried plasmid DNA (reconstitute with 100 ul of water).

<b>Reconstitution Method:</b>	<ol style="list-style-type: none"><li>1. Centrifuge at 5,000xg for 5min.</li><li>2. Carefully open the tube and add 100ul of sterile water to dissolve the DNA.</li><li>3. Close the tube and incubate for 10 minutes at room temperature.</li><li>4. Briefly vortex the tube and then do a quick spin (less than 5000xg) to concentrate the liquid at the bottom.</li><li>5. Store the suspended plasmid at -20°C. The DNA is stable for at least one year from date of shipping when stored at -20°C.</li></ol>
<b>Note:</b>	Plasmids are not sterile. For experiments where strict sterility is required, filtration with 0.22um filter is required.
<b>RefSeq:</b>	<a href="#">NM_001552.3</a>
<b>RefSeq Size:</b>	2246 bp
<b>RefSeq ORF:</b>	777 bp
<b>Locus ID:</b>	3487
<b>UniProt ID:</b>	<a href="#">P22692</a>
<b>Cytogenetics:</b>	17q21.2
<b>Domains:</b>	thyroglobulin_1, IB
<b>Protein Families:</b>	Secreted Protein
<b>MW:</b>	27.9 kDa
<b>Gene Summary:</b>	This gene is a member of the insulin-like growth factor binding protein (IGFBP) family and encodes a protein with an IGFBP domain and a thyroglobulin type-I domain. The protein binds both insulin-like growth factors (IGFs) I and II and circulates in the plasma in both glycosylated and non-glycosylated forms. Binding of this protein prolongs the half-life of the IGFs and alters their interaction with cell surface receptors. [provided by RefSeq, Jul 2008]

Product images:



Circular map for RC204188



Western blot validation of overexpression lysate (Cat# [LY419861]) using anti-DDK antibody (Cat# [TA50011-100]). Left: Cell lysates from untransfected HEK293T cells; Right: Cell lysates from HEK293T cells transfected with RC204188 using transfection reagent MegaTran 2.0 (Cat# [TT210002]).



Coomassie blue staining of purified IGF4BP4 protein (Cat# [TP304188]). The protein was produced from HEK293T cells transfected with IGF4BP4 cDNA clone (Cat# RC204188) using MegaTran 2.0 (Cat# [TT210002]).