

Product datasheet for **RC204186**

PEDF (SERPINF1) (NM_002615) Human Tagged ORF Clone

Product data:

Product Type:	Expression Plasmids
Product Name:	PEDF (SERPINF1) (NM_002615) Human Tagged ORF Clone
Tag:	Myc-DDK
Symbol:	PEDF
Synonyms:	EPC-1; OI6; OI12; PEDF; PIG35
Mammalian Cell Selection:	Neomycin
Vector:	pCMV6-Entry (PS100001)
E. coli Selection:	Kanamycin (25 ug/mL)
ORF Nucleotide Sequence:	>RC204186 ORF sequence Red=Cloning site Blue=ORF Green=Tags(s)

TTTTGTAATACGACTCACTATAGGGCGGCCGGAATTCGTCGACTGGATCCGGTACCGAGGAGATCTGCC
GCC**CGATCGCC**

ATGCAGGCCCTGGTGCTACTCCTCTGCATTGGAGCCCTCCTCGGGCACAGCAGCTGCCAGAACCTGCCA
GCCCCCGGAGGAGGGCTCCCCAGACCCCGACAGCACAGGGCGCTGGTGGAGGAGGAGGATCCTTTCTT
CAAAGTCCCCGTGAACAAGCTGGCAGCGGCTGTCTCAACTTCGGCTATGACCTGTACCGGGTGCATCC
AGCATGAGCCCCACGACCAACGTCTCTCTCTCAGTGTGGCCACGGCCCTCTCGGCCCTCTCGC
TGGGAGCGGAGCAGCGAACAGAATCCATCATTACCGGGCTCTCTACTATGACTTGATCAGCAGCCAGA
CATCCATGGTACCTATAAGGAGCTCCTTGACACGGTCACTGCCCGCCAGAAGAACCTCAAGAGTGCCTCC
CGGATCGTCTTTGAGAAGAAGCTGCGCATAAAATCCAGCTTTGTGGCACCTCTGGAAAAGTCATATGGGA
CCAGGCCAGAGTCTGACGGGCAACCCTCGCTTGGACCTGCAAGAGATCAACAACCTGGGTGCAGGCGCA
GATGAAAGGGAAGCTCGCCAGGTCCACAAGGAAATCCCGATGAGATCAGCATTCTCCTTCTCGGTGTG
GCGCACTCAAGGGGAGTGGGTAACAAAGTTTGACTCCAGAAAGACTTCCCTCGAGGATTTCTACTTGG
ATGAAGAGAGGACCGTGAGGGTCCCCATGATGTGCGACCTAAGGCTGTTTTACGCTATGGCTTGGATT
AGATCTCAGCTGCAAGATTGCCAGCTGCCCTTGACCGGAAGCATGAGTATCATCTTCTCTGCCCTG
AAAGTGACCCAGAATTTGACCTTGATAGAGGAGAGCCCTCACCTCGAGTTCATTATGACATAGACCGG
AACTGAAGACCGTGACGGCGCTCACTGTCCCCAAGCTGAAGCTGAGTTACGAAGGCGAAGTCACCAA
GTCCCTGCAGGAGATGAAGCTGCAATCCTTGTGTTGATTACCAGACTTTAGCAAGATCACAGGCAAAACC
ATCAAGCTGACTCAGGTGGAACACCGGGCTGGCTTTGAGTGGAACGAGGATGGGGCGGGAACACCCCA
GCCAGGGCTGCAGCCTGCCACCTCACCTTCCCCTGGACTATCACCTTAACCAGCCTTTCATCTTCGT
ACTGAGGGACACAGACACAGGGGCCCTTCTTTCATTGGCAAGATTCTGGACCCAGGGGCC

ACGGTACGCGGCCGCTCGAGCAGAACTCATCTCAGAAGAGGATCTGGCAGCAATGATATCTGGATT
ACAAGGATGACGACGATAAGGTTTAA



[View online >](#)

Protein Sequence: >RC204186 protein sequence
Red=Cloning site Green=Tags(s)

MQALVLLLCIGALLGHSSQNPA SPPEEGSPDPDSTGALVEEEDPFFKVPVNKLA AVSNFGYDLYRVRS
 SMSPTTNVLLSPLSVATALSALS LGAEQRTESIHRALYYDLISSPDIHGTYKELLDTVTARQNLKSAS
 RIVFEKKLRIKSSFVAPLEKSYGTRPRVLTGNPRLDLQEINNWWQAQMKGLARSTKEIPDEISILLGV
 AHFKGQWVTKFDSRKTSL EDFYLDEERTVRVPMMSDPKAVLRYGLDSDLCKIAQLPLTGSM SIIFFLPL
 KVTQNLTLIEESLTSEFIHDIDRELKTVQAVLTPKLLKLSYEGEVTKSLQEMKLQSLFDSPDFSKITGKP
 IKLTQVEHRAGFEWNEDGAGTTPSPGLQPAHLTFPLDYHLNQPFIFVLRD TDTGALLFIGKILDPRGP

TRTRPLEQKLISEEDLAANDILDYKDDDDKV

Chromatograms: https://cdn.origene.com/chromatograms/mk6174_h06.zip

Restriction Sites: SgfI-MluI

Cloning Scheme:



* The last codon before the Stop codon of the ORF

ACCN: NM_002615

ORF Size: 1254 bp

OTI Disclaimer: The molecular sequence of this clone aligns with the gene accession number as a point of reference only. However, individual transcript sequences of the same gene can differ through naturally occurring variations (e.g. polymorphisms), each with its own valid existence. This clone is substantially in agreement with the reference, but a complete review of all prevailing variants is recommended prior to use. [More info](#)

OTI Annotation: This clone was engineered to express the complete ORF with an expression tag. Expression varies depending on the nature of the gene.

Components: The ORF clone is ion-exchange column purified and shipped in a 2D barcoded Matrix tube containing 10ug of transfection-ready, dried plasmid DNA (reconstitute with 100 ul of water).

Reconstitution Method:

1. Centrifuge at 5,000xg for 5min.
2. Carefully open the tube and add 100ul of sterile water to dissolve the DNA.
3. Close the tube and incubate for 10 minutes at room temperature.
4. Briefly vortex the tube and then do a quick spin (less than 5000xg) to concentrate the liquid at the bottom.
5. Store the suspended plasmid at -20°C. The DNA is stable for at least one year from date of shipping when stored at -20°C.

Note: Plasmids are not sterile. For experiments where strict sterility is required, filtration with 0.22um filter is required.

RefSeq: [NM_002615.2](#)

RefSeq Size: 1552 bp

RefSeq ORF: 1257 bp

Locus ID: 5176

UniProt ID: [P36955](#)

Cytogenetics: 17p13.3

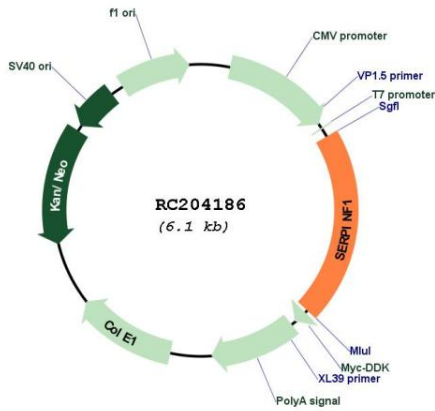
Domains: SERPIN

Protein Families: Druggable Genome, Secreted Protein

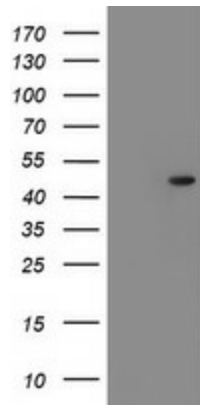
MW: 46.4 kDa

Gene Summary: This gene encodes a member of the serpin family that does not display the serine protease inhibitory activity shown by many of the other serpin proteins. The encoded protein is secreted and strongly inhibits angiogenesis. In addition, this protein is a neurotrophic factor involved in neuronal differentiation in retinoblastoma cells. Mutations in this gene were found in individuals with osteogenesis imperfecta, type VI. [provided by RefSeq, Aug 2016]

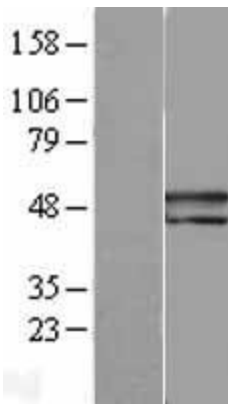
Product images:



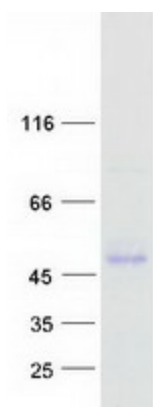
Circular map for RC204186



HEK293T cells were transfected with the pCMV6-ENTRY control (Cat# [PS100001], Left lane) or pCMV6-ENTRY SERPINF1 (Cat# RC204186, Right lane) cDNA for 48 hrs and lysed. Equivalent amounts of cell lysates (5 ug per lane) were separated by SDS-PAGE and immunoblotted with anti-SERPINF1 (Cat# [TA504434]). Positive lysates [LY400927] (100ug) and [LC400927] (20ug) can be purchased separately from OriGene.



Western blot validation of overexpression lysate (Cat# [LY400927]) using anti-DDK antibody (Cat# [TA50011-100]). Left: Cell lysates from untransfected HEK293T cells; Right: Cell lysates from HEK293T cells transfected with RC204186 using transfection reagent MegaTran 2.0 (Cat# [TT210002]).



Coomassie blue staining of purified SERPINF1 protein (Cat# [TP304186]). The protein was produced from HEK293T cells transfected with SERPINF1 cDNA clone (Cat# RC204186) using MegaTran 2.0 (Cat# [TT210002]).