

## Product datasheet for RC204183L2

### ATP1B3 (NM\_001679) Human Tagged Lenti ORF Clone

#### Product data:

Product Type:	Expression Plasmids
Product Name:	ATP1B3 (NM_001679) Human Tagged Lenti ORF Clone
Tag:	mGFP
Symbol:	ATP1B3
Synonyms:	ATPB-3; CD298
Mammalian Cell Selection:	None
Vector:	pLenti-C-mGFP (PS100071)
E. coli Selection:	Chloramphenicol (34 ug/mL)
ORF Nucleotide Sequence:	The ORF insert of this clone is exactly the same as(RC204183).
Restriction Sites:	SgfI-MluI
Cloning Scheme:	

Cloning sites used for ORF Shuttling:



\* The last codon before the Stop codon of the ORF.

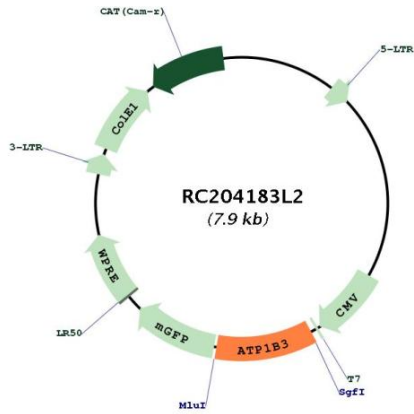
ACCN:	NM_001679
ORF Size:	837 bp



[View online >](#)

<b>OTI Disclaimer:</b>	The molecular sequence of this clone aligns with the gene accession number as a point of reference only. However, individual transcript sequences of the same gene can differ through naturally occurring variations (e.g. polymorphisms), each with its own valid existence. This clone is substantially in agreement with the reference, but a complete review of all prevailing variants is recommended prior to use. <a href="#">More info</a>
<b>OTI Annotation:</b>	This clone was engineered to express the complete ORF with an expression tag. Expression varies depending on the nature of the gene.
<b>Components:</b>	The ORF clone is ion-exchange column purified and shipped in a 2D barcoded Matrix tube containing 10ug of transfection-ready, dried plasmid DNA (reconstitute with 100 ul of water).
<b>Reconstitution Method:</b>	<ol style="list-style-type: none"><li>1. Centrifuge at 5,000xg for 5min.</li><li>2. Carefully open the tube and add 100ul of sterile water to dissolve the DNA.</li><li>3. Close the tube and incubate for 10 minutes at room temperature.</li><li>4. Briefly vortex the tube and then do a quick spin (less than 5000xg) to concentrate the liquid at the bottom.</li><li>5. Store the suspended plasmid at -20°C. The DNA is stable for at least one year from date of shipping when stored at -20°C.</li></ol>
<b>RefSeq:</b>	<a href="#">NM_001679.2</a>
<b>RefSeq Size:</b>	1853 bp
<b>RefSeq ORF:</b>	840 bp
<b>Locus ID:</b>	483
<b>UniProt ID:</b>	<a href="#">P54709</a>
<b>Cytogenetics:</b>	3q23
<b>Domains:</b>	Na_K-ATPase
<b>Protein Families:</b>	Transmembrane
<b>Protein Pathways:</b>	Cardiac muscle contraction
<b>MW:</b>	31.5 kDa
<b>Gene Summary:</b>	The protein encoded by this gene belongs to the family of Na <sup>+</sup> /K <sup>+</sup> and H <sup>+</sup> /K <sup>+</sup> ATPases beta chain proteins, and to the subfamily of Na <sup>+</sup> /K <sup>+</sup> -ATPases. Na <sup>+</sup> /K <sup>+</sup> -ATPase is an integral membrane protein responsible for establishing and maintaining the electrochemical gradients of Na and K ions across the plasma membrane. These gradients are essential for osmoregulation, for sodium-coupled transport of a variety of organic and inorganic molecules, and for electrical excitability of nerve and muscle. This enzyme is composed of two subunits, a large catalytic subunit (alpha) and a smaller glycoprotein subunit (beta). The beta subunit regulates, through assembly of alpha/beta heterodimers, the number of sodium pumps transported to the plasma membrane. The glycoprotein subunit of Na <sup>+</sup> /K <sup>+</sup> -ATPase is encoded by multiple genes. This gene encodes a beta 3 subunit. This gene encodes a beta 3 subunit. A pseudogene exists for this gene, and it is located on chromosome 2. [provided by RefSeq, Jul 2008]

Product images:



Circular map for RC204183L2