

Product datasheet for **RC204182**

SLC1A7 (NM_006671) Human Tagged ORF Clone

Product data:

Product Type:	Expression Plasmids
Product Name:	SLC1A7 (NM_006671) Human Tagged ORF Clone
Tag:	Myc-DDK
Symbol:	SLC1A7
Synonyms:	AAAT; EAAT5
Mammalian Cell Selection:	Neomycin
Vector:	pCMV6-Entry (PS100001)
E. coli Selection:	Kanamycin (25 ug/mL)



[View online »](#)

ORF Nucleotide Sequence:

>RC204182 ORF sequence
 Red=Cloning site Blue=ORF Green=Tags(s)

TTTTGTAATACGACTCACTATAGGGCGGCCGGAATTCGTCGACTGGATCCGGTACCGAGGAGATCTGCC
 GCC**CGGATCGCC**

ATGGTGCCGCATGCCATCTTGGCACGGGGAGGGACGTGTGCAGGCGGAATGGACTCCTCATCTGTCTG
 TGCTGTCTGTCATCGTGGGCTGCCTCCTCGGCTTCTTCTTGAGGACCCGGCGCCTCTCACCACAGGAAAT
 TAGTTACTTCCAGTTCCTGGAGAGCTCCTGATGAGGATGCTGAAGATGATGATCCTGCCACTGGTGGTC
 TCCAGCTTGATGTCGGGACTTGCCTCCCTGGATGCCAAGACCTCTAGCCGCTGGGCGTCTCACCGTGG
 CGTACTACCTGTGGACCACCTTCATGGCTGTCATCGTGGGCATCTTCATGGTCTCCATCATCCACCAGG
 CAGCGCGGCCAGAAGGAGACCACGGAGCAGAGTGGGAAGCCCATCATGAGCTCAGCCGATGCCCTGTTG
 GACCTCATCCGGAACATGTTCCAGCCAACCTAGTAGAAGCCACATTCAAACAGTACCGCACCAAGACCA
 CCCCAGTTGTCAAGTCCCCAAGGTGGCACCAGAGGAGGCCCTCCTCGGCGGATCCTCATCTACGGGGT
 CCAGGAGGAGAATGGCTCCCATGTGCAGAACTTCGCCCTGGACCTGACCCCGCCGCCGAGGTGCTTTAC
 AAGTCAGAGCCGGGACCCAGCGATGGCATGAATGTGCTGGGCATCGTCTTCTCTCTGCCACCATGGGCA
 TCATGCTGGGCCGATGGGTGACAGCGGGGCCCCCTGGTCAGCTTCTGCCAGTGCCCAATGAGTCGGT
 CATGAAGATCGTGGCGGTGGCTGTGTGGTATTTCCCTTCGGCATTGTGTTCTCATTGCGGGTAAGATC
 CTGGAGATGGACGACCCAGGGCCGTCGGCAAGAAGCTGGGCTTCTACTCAGTACCCGTGGTGTGCGGGC
 TGGTGTCCACGGGCTCTTTATCCTGCCCTGCTCTACTTCTTCATCACCAGAAGAATCCCATCGTCTT
 CATCCGCGGCATCCTGCAGGCTGTGTCATCGCGCTGGCCACCTCCTCCAGCTCAGCCACACTGCCCATC
 ACCTTCAAGTGCCTGCTGGAGAACAACCATCGACCCGGCGCATCGCTCGCTTCTGCTGCCCGTGGGTG
 CCACCATCAACATGGACGGCCTCGCTACGAGGCTGTGGCCGCCATCTTCATCGCCAGGTCAACAA
 CTACGAGCTGGACTTTGGCCAGATCATACCATCAGTATCACAGCCACTGCAGCCAGCATTGGGGCAGCT
 GGCATCCCCAGGCCGGCCTCGTCACCATGGTCATCGTGTCTCACCTCCGTGGGACTGCCACCGATGACA
 TCACCCTCATATTGCCGTTGACTGGGCTCTGGACCGTTTCCGCACCATGATTAACGTGCTGGTGATGC
 GCTGGCAGCGGGATCATGGCCATATAATGTCGGAAGGATTTTGGCCGGGACACAGGCACCGAGAAACTG
 CTGCCCTGCGAGACCAAGCCAGTGAACCTCCAGGAGATCGTGGCAGCCAGCAGAATGGCTGTGTGAAGA
 GTGTAGCCGAGGCTCCGAGCTCACCTGGGCCACCTGCCCCACCACGTCCCGTTCAAGTGGAGCG
 GGATGAGGAGCTGCCGCTGCGAGTCTGAACCACTGCACCATCCAGATCAGCGAGCTGGAGACCAATGTC

ACGCGTACGCGGCCGCTCGAGCAGAAACTCATCTCAGAAGAGGATCTGGCAGCAAATGATATCCTGGATT
 ACAAGGATGACGACGATAAGGTTTAA

Protein Sequence:

>RC204182 protein sequence
 Red=Cloning site Green=Tags(s)

MVPHAILARGRDVCRRNLLILSVLSVIVGCLLGFRLRRLSPQEISYFQFPGELLMRMLKMMILPLVY
 SSLMSGLASLDAKTSSRLGVLTVAYYLWTFMAVIVGIFMVSIIHPGSAAQKETTEQSGKPISSADALL
 DLIRNMFANLVEATFKQYRKTTPVVKSPKVAPEEAPRRILYGVQEENGSHVQNFALDTPPPEVVY
 KSEPGTSDGMNVLGIVVFSATMGIMLGRMGDSGAPLVFQCCLNESVMKIVAVAVVYFPFVIVLIAGKI
 LEMDDPRAVGKGLGFYSVTVVCGLVHLGLFILPLLFFITKKNPIVFIGILQALLIALATSSSSATLPI
 TFKCLLENNHIDRRIARFVLPVGATINMDGTALYEAVAAIFIAQVNNYELDFGQIITISITATAASIGAA
 GIPQAGLVTMVIIVLTSVGLPTDDITLIIAVDWALDRFRMTINVLGDALAAGIMAHI CRKDFARDTGTTEKL
 LPCETKPVSLQEI VAAQQNGCVKSVAEASELTLGPTCPHHVPVQVERDEELPAASLNHCTIQISELETNV

TRTRPLEQKLI SEEDLAANDILDYKDDDDKV

Chromatograms:

https://cdn.origene.com/chromatograms/mk6199_b10.zip

Restriction Sites:

Sgfl-Mlul

Cloning Scheme:



ACCN: NM_006671

ORF Size: 1680 bp

OTI Disclaimer: The molecular sequence of this clone aligns with the gene accession number as a point of reference only. However, individual transcript sequences of the same gene can differ through naturally occurring variations (e.g. polymorphisms), each with its own valid existence. This clone is substantially in agreement with the reference, but a complete review of all prevailing variants is recommended prior to use. [More info](#)

OTI Annotation: This clone was engineered to express the complete ORF with an expression tag. Expression varies depending on the nature of the gene.

Components: The ORF clone is ion-exchange column purified and shipped in a 2D barcoded Matrix tube containing 10ug of transfection-ready, dried plasmid DNA (reconstitute with 100 ul of water).

- Reconstitution Method:
1. Centrifuge at 5,000xg for 5min.
 2. Carefully open the tube and add 100ul of sterile water to dissolve the DNA.
 3. Close the tube and incubate for 10 minutes at room temperature.
 4. Briefly vortex the tube and then do a quick spin (less than 5000xg) to concentrate the liquid at the bottom.
 5. Store the suspended plasmid at -20°C. The DNA is stable for at least one year from date of shipping when stored at -20°C.

RefSeq: [NM_006671.3](#), [NP_006662.2](#)

RefSeq Size: 2696 bp

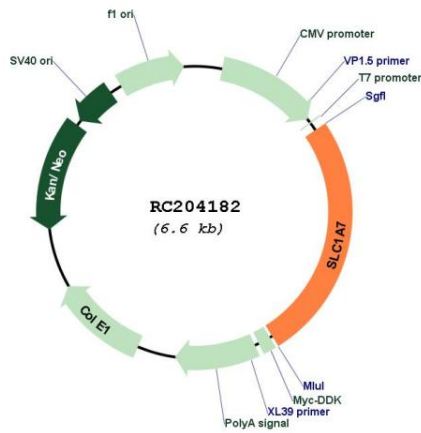
RefSeq ORF: 1683 bp

Locus ID: 6512

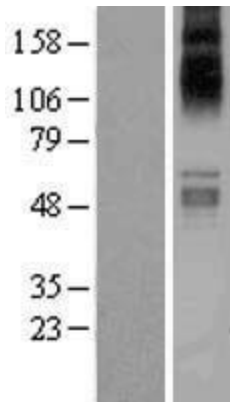
UniProt ID: [O00341](#)

Cytogenetics: 1p32.3
Protein Families: Transmembrane
MW: 60.7 kDa
Gene Summary: Transports L-glutamate; the L-glutamate uptake is sodium- and voltage-dependent and chloride-independent. Its associated chloride conductance may participate in visual processing.[UniProtKB/Swiss-Prot Function]

Product images:



Circular map for RC204182



Western blot validation of overexpression lysate (Cat# [LY401996]) using anti-DDK antibody (Cat# [TA50011-100]). Left: Cell lysates from untransfected HEK293T cells; Right: Cell lysates from HEK293T cells transfected with RC204182 using transfection reagent MegaTran 2.0 (Cat# [TT210002]).