

## Product datasheet for RC204173

### gamma Synuclein (SNCG) (NM\_003087) Human Tagged ORF Clone

#### Product data:

**Product Type:** Expression Plasmids  
**Product Name:** gamma Synuclein (SNCG) (NM\_003087) Human Tagged ORF Clone  
**Tag:** Myc-DDK  
**Symbol:** gamma Synuclein  
**Synonyms:** BCSG1; SR  
**Mammalian Cell Selection:** Neomycin  
**Vector:** pCMV6-Entry (PS100001)  
**E. coli Selection:** Kanamycin (25 ug/mL)  
**ORF Nucleotide Sequence:** >RC204173 ORF sequence  
 Red=Cloning site Blue=ORF Green=Tags(s)

TTTTGTAATACGACTCACTATAGGGCGCCGGGAATTCGTCGACTGGATCCGGTACCGAGGAGATCTGCC  
 GCCCGCATCGCC

ATGGATGTCTTCAAGAAGGGCTTCTCCATCGCCAAGGAGGGCGTGGTGGGTGCGGTGAAAAAGACCAAGC  
 AGGGGGTGACGGAAGCAGCTGAGAAGACCAAGGAGGGGTGATGTATGTGGGAGCCAAGACCAAGGAGAA  
 TGTTGTACAGAGCGTGACCTCAGTGGCCGAGAAGACCAAGGAGCAGGCCAACGCCGTGAGCGAGGCTGTG  
 GTGAGCAGCGTCAACACTGTGGCCACCAAGACCGTGGAGGAGCGGAGAACATCGCGTCCACCTCCGGGG  
 TGGTGCACAAGGAGGACTTGAGGCCATCTGCCCCCAACAGGAGGGTGGAGCATCCAAGAGAAAGAGGA  
 AGTGGCAGAGGAGGCCAGAGTGGGGGAGAC

ACGCGTACGCGGCCGCTCGAGCAGAACTCATCTCAGAAGAGGATCTGGCAGCAAATGATATCCTGGATT  
 ACAAGGATGACGACGATAAGGTTTAA

**Protein Sequence:** >RC204173 protein sequence  
 Red=Cloning site Green=Tags(s)  
 MDVFKKGFSAKEGVVGAVEKTKQGVTEAAEKTKEGVMYVGAKTKENVVQSVTSVAEKTKEQANAVSEAV  
 VSSVNTVATKTVEEAENIAVTSGVVRKEDLRPSAPQGEASKEKEEVAEEAQSGGD

TRTRPLEQKLISEEDLAANDILDYKDDDDKV

**Chromatograms:** [https://cdn.origene.com/chromatograms/mk6796\\_a01.zip](https://cdn.origene.com/chromatograms/mk6796_a01.zip)

**Restriction Sites:** SgfI-MluI



[View online »](#)

Cloning Scheme:



ACCN: NM\_003087

ORF Size: 381 bp

OTI Disclaimer: The molecular sequence of this clone aligns with the gene accession number as a point of reference only. However, individual transcript sequences of the same gene can differ through naturally occurring variations (e.g. polymorphisms), each with its own valid existence. This clone is substantially in agreement with the reference, but a complete review of all prevailing variants is recommended prior to use. [More info](#)

OTI Annotation: This clone was engineered to express the complete ORF with an expression tag. Expression varies depending on the nature of the gene.

Components: The ORF clone is ion-exchange column purified and shipped in a 2D barcoded Matrix tube containing 10ug of transfection-ready, dried plasmid DNA (reconstitute with 100 ul of water).

Reconstitution Method:

1. Centrifuge at 5,000xg for 5min.
2. Carefully open the tube and add 100ul of sterile water to dissolve the DNA.
3. Close the tube and incubate for 10 minutes at room temperature.
4. Briefly vortex the tube and then do a quick spin (less than 5000xg) to concentrate the liquid at the bottom.
5. Store the suspended plasmid at -20°C. The DNA is stable for at least one year from date of shipping when stored at -20°C.

RefSeq: [NM\\_003087.3](#)

RefSeq Size: 855 bp

RefSeq ORF: 384 bp

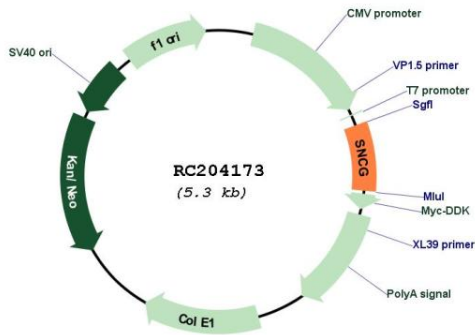
Locus ID: 6623

UniProt ID: [O76070](#)

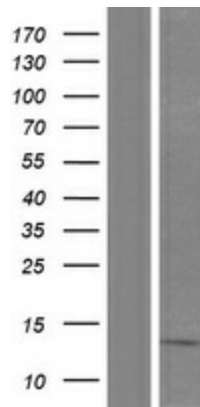
**Cytogenetics:** 10q23.2  
**Domains:** Synuclein  
**MW:** 13.3 kDa

**Gene Summary:** This gene encodes a member of the synuclein family of proteins which are believed to be involved in the pathogenesis of neurodegenerative diseases. Mutations in this gene have also been associated with breast tumor development. [provided by RefSeq, Jan 2010]

**Product images:**



Circular map for RC204173



Western blot validation of overexpression lysate (Cat# [LY418908]) using anti-DDK antibody (Cat# [TA50011-100]). Left: Cell lysates from untransfected HEK293T cells; Right: Cell lysates from HEK293T cells transfected with RC204173 using transfection reagent MegaTran 2.0 (Cat# [TT210002]).