

Product datasheet for RC204170L4

ID4 (NM_001546) Human Tagged Lenti ORF Clone

Product data:

Product Type:	Expression Plasmids
Product Name:	ID4 (NM_001546) Human Tagged Lenti ORF Clone
Tag:	mGFP
Symbol:	ID4
Synonyms:	bHLHb27; IDB4
Mammalian Cell Selection:	Puromycin
Vector:	pLenti-C-mGFP-P2A-Puro (PS100093)
E. coli Selection:	Chloramphenicol (34 ug/mL)
ORF Nucleotide Sequence:	The ORF insert of this clone is exactly the same as(RC204170).
Restriction Sites:	SgfI-MluI
Cloning Scheme:	

Cloning sites used for ORF Shuttling:



* The last codon before the Stop codon of the ORF.

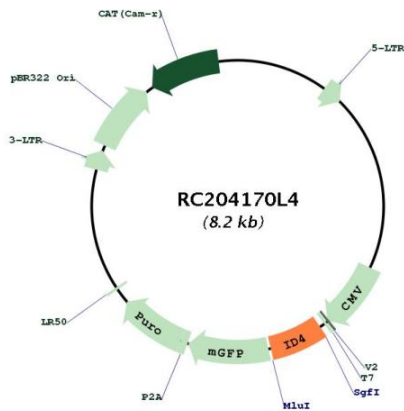
ACCN:	NM_001546
ORF Size:	483 bp



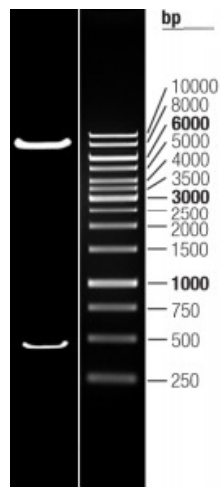
[View online »](#)

OTI Disclaimer:	The molecular sequence of this clone aligns with the gene accession number as a point of reference only. However, individual transcript sequences of the same gene can differ through naturally occurring variations (e.g. polymorphisms), each with its own valid existence. This clone is substantially in agreement with the reference, but a complete review of all prevailing variants is recommended prior to use. More info
OTI Annotation:	This clone was engineered to express the complete ORF with an expression tag. Expression varies depending on the nature of the gene.
Components:	The ORF clone is ion-exchange column purified and shipped in a 2D barcoded Matrix tube containing 10ug of transfection-ready, dried plasmid DNA (reconstitute with 100 ul of water).
Reconstitution Method:	<ol style="list-style-type: none">1. Centrifuge at 5,000xg for 5min.2. Carefully open the tube and add 100ul of sterile water to dissolve the DNA.3. Close the tube and incubate for 10 minutes at room temperature.4. Briefly vortex the tube and then do a quick spin (less than 5000xg) to concentrate the liquid at the bottom.5. Store the suspended plasmid at -20°C. The DNA is stable for at least one year from date of shipping when stored at -20°C.
RefSeq:	NM_001546.2
RefSeq Size:	2389 bp
RefSeq ORF:	486 bp
Locus ID:	3400
UniProt ID:	P47928
Cytogenetics:	6p22.3
Domains:	HLH
Protein Families:	ES Cell Differentiation/IPS, Transcription Factors
Protein Pathways:	TGF-beta signaling pathway
MW:	16.4 kDa
Gene Summary:	This gene encodes a member of the inhibitor of DNA binding (ID) protein family. The encoded protein lacks DNA binding ability, and instead regulates gene expression through binding to and inhibiting basic helix-loop-helix transcription factors. This protein has been implicated in the regulation of diverse cellular processes that play a role in development and tumorigenesis. [provided by RefSeq, Aug 2017]

Product images:



Circular map for RC204170L4



Double digestion of RC204170L4 using SgfI and MluI