

Product datasheet for **RC204158**

PP1C gamma (PPP1CC) (NM_002710) Human Tagged ORF Clone

Product data:

Product Type:	Expression Plasmids
Product Name:	PP1C gamma (PPP1CC) (NM_002710) Human Tagged ORF Clone
Tag:	Myc-DDK
Symbol:	PP1C gamma
Synonyms:	PP-1G; PP1C; PPP1G
Mammalian Cell Selection:	Neomycin
Vector:	pCMV6-Entry (PS100001)
E. coli Selection:	Kanamycin (25 ug/mL)
ORF Nucleotide Sequence:	>RC204158 ORF sequence Red=Cloning site Blue=ORF Green=Tags(s)

TTTTGTAATACGACTCACTATAGGGCGCCGGGAATTCGTCGACTGGATCCGGTACCGAGGAGATCTGCC
GCC**CGATCGCC**

ATGGCGGATTTAGATAAACTCAACATCGACAGCATTATCCAACGGCTGCTGGAAGTGAGAGGGTCCAAGC
CTGGTAAGAATGTCCAGCTTCAGGAGAATGAAATCAGAGGACTGTGCTTAAAGTCTCGTGAAATCTTTCT
CAGTCAGCCTATCCTACTAGAATTGAAGCACCCTCAAATATGTGGTGACATCCATGGACAATACTAT
GATTTGCTGCGACTTTTTGAGTACGGTGGTTCCACCAGAAAGCAACTACCTGTTTCTGGGGACTATG
TGGACAGGGGAAAGCAGTCATTGGAGACGATCTGCCTTACTGGCCTACAAAATAAAATATCCTGAGAA
TTTTTTTCTTCTCAGAGGAACCATGAATGTGCCAGCATCAACAGAATTTATGGATTTTATGATGAATGT
AAAAGAAGATACAACATTAACCTATGAAAACTTTCACAGACTGTTTTAACTGTTTACCGATAGCAGCCA
TCGTGGATGAGAAGATATTCTGCTGTCAATGGAGTTTATCACCAGATCTCAATCTATGGAGCAGATTTCG
GCGAATTATGCGACCAACTGATGTACCAGATCAAGGTCTCTTTGTGATCTTTTGGTCTGACCCCGAT
AAAGATGTCTTAGGCTGGGGTAAAAATGACAGAGGAGTGTCTTACATTTGGTGCAGAAGTGGTTGCAA
AATTTCTCCATAAGCATGATTTGGATCTTATATGTAGAGCCCATCAGGTGGTTGAAGATGGATATGAATT
TTTTGCAAAGAGGCAGTTGGTCACTCTGTTTTCTGCGCCCAATTATTGCGGAGAGTTTGACAATGCAGGT
GCCATGATGAGTGTGGATGAAACACTAATGTGTTCTTTTCAGATTTTAAAGCCTGCAGAGAAAAAGAAGC
CAATGCCACGAGACCTGTAACGCCTCCAAGGGTATGATCACAAGCAAGCAAAAGAAA

ACGCGTACGCGGCCGCTCGAGCAGAAACTCATCTCAGAAGAGGATCTGGCAGCAATGATATCCTGGATT
ACAAGGATGACGACGATAAGGTTTAA



[View online »](#)

Protein Sequence: >RC204158 protein sequence
 Red=Cloning site Green=Tags(s)

MADLDKLNIDSIIQRLLLEVRSKPGKNVQLQENEIRGLCLKSREIFLSQPILLELEAPLKICGDIHGQYY
 DLLRLFEYGGFPPESNYLFGLDYVDRGKQSLLETICLLLAYKIKYPENFFLLRGNHECASINRIYGFYDEC
 KRRYNIKLWKTFTDCFNCLPIAAIVDEKIFCCHGGLSPDLQSMEQIRIRMRPTDVPDQGLLCDLLWSDPD
 KDVLGWGENDRGVSFTFGAEVVAKFLHKHDLDLICRAHQVVEDGYEFFAKRQLVTLFSAPNYCGEFDNAG
 AMMSVDETLMCSFQILKPAEKKKPNATRPVTPPRGMITKQAKK

TRTRPLEQKLISEEDLAANDILDYKDDDDKV

Chromatograms: https://cdn.origene.com/chromatograms/mk6241_d05.zip

Restriction Sites: SgfI-MluI

Cloning Scheme:

Cloning sites used for ORF Shuttling:



* The last codon before the Stop codon of the ORF

ACCN: NM_002710

ORF Size: 969 bp

OTI Disclaimer: The molecular sequence of this clone aligns with the gene accession number as a point of reference only. However, individual transcript sequences of the same gene can differ through naturally occurring variations (e.g. polymorphisms), each with its own valid existence. This clone is substantially in agreement with the reference, but a complete review of all prevailing variants is recommended prior to use. [More info](#)

OTI Annotation: This clone was engineered to express the complete ORF with an expression tag. Expression varies depending on the nature of the gene.

Components: The ORF clone is ion-exchange column purified and shipped in a 2D barcoded Matrix tube containing 10ug of transfection-ready, dried plasmid DNA (reconstitute with 100 ul of water).

Reconstitution Method:

1. Centrifuge at 5,000xg for 5min.
2. Carefully open the tube and add 100ul of sterile water to dissolve the DNA.
3. Close the tube and incubate for 10 minutes at room temperature.
4. Briefly vortex the tube and then do a quick spin (less than 5000xg) to concentrate the liquid at the bottom.
5. Store the suspended plasmid at -20°C. The DNA is stable for at least one year from date of shipping when stored at -20°C.

Note: Plasmids are not sterile. For experiments where strict sterility is required, filtration with 0.22um filter is required.

RefSeq: [NM_002710.4](#)

RefSeq Size: 2526 bp

RefSeq ORF: 972 bp

Locus ID: 5501

UniProt ID: [P36873](#)

Cytogenetics: 12q24.11

Domains: Metallophos, PP2Ac

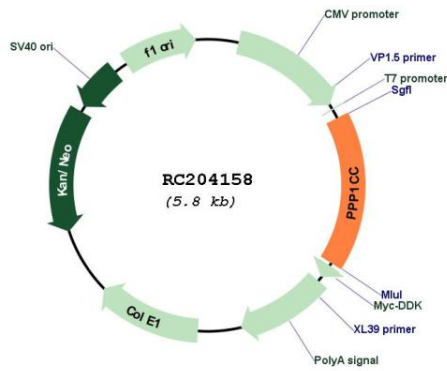
Protein Families: Druggable Genome, Phosphatase

Protein Pathways: Focal adhesion, Insulin signaling pathway, Long-term potentiation, Oocyte meiosis, Regulation of actin cytoskeleton, Vascular smooth muscle contraction

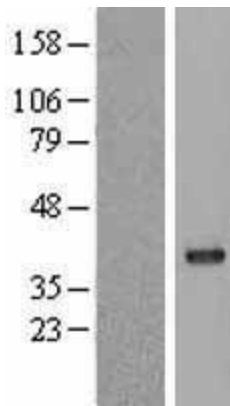
MW: 37 kDa

Gene Summary: The protein encoded by this gene belongs to the protein phosphatase family, PP1 subfamily. PP1 is an ubiquitous serine/threonine phosphatase that regulates many cellular processes, including cell division. It is expressed in mammalian cells as three closely related isoforms, alpha, beta/delta and gamma, which have distinct localization patterns. This gene encodes the gamma isozyme. Alternatively spliced transcript variants encoding different isoforms have been found for this gene. [provided by RefSeq, Oct 2011]

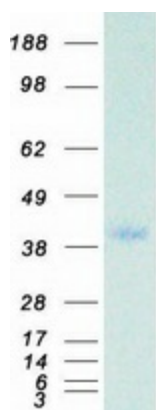
Product images:



Circular map for RC204158



Western blot validation of overexpression lysate (Cat# [LY419153]) using anti-DDK antibody (Cat# [TA50011-100]). Left: Cell lysates from untransfected HEK293T cells; Right: Cell lysates from HEK293T cells transfected with RC204158 using transfection reagent MegaTran 2.0 (Cat# [TT210002]).



Coomassie blue staining of purified PPP1CC protein (Cat# [TP304158]). The protein was produced from HEK293T cells transfected with PPP1CC cDNA clone (Cat# RC204158) using MegaTran 2.0 (Cat# [TT210002]).