

## Product datasheet for RC204157

### SNAP45 (SNAPC2) (NM\_003083) Human Tagged ORF Clone

#### Product data:

Product Type:	Expression Plasmids
Product Name:	SNAP45 (SNAPC2) (NM_003083) Human Tagged ORF Clone
Tag:	Myc-DDK
Symbol:	SNAP45
Synonyms:	PTFDELTA; SNAP45
Mammalian Cell Selection:	Neomycin
Vector:	pCMV6-Entry (PS100001)
E. coli Selection:	Kanamycin (25 ug/mL)
ORF Nucleotide Sequence:	>RC204157 ORF sequence Red=Cloning site Blue=ORF Green=Tags(s)

TTTTGTAATACGACTCACTATAGGGCGGCCGGAATTCGTCGACTGGATCCGGTACCGAGGAGATCTGCC  
GCC**CGATCGCC**

ATGAAGCCACCTCCAGGCGGCGAGCGGCCCGGCGCGCTATCTGGGCGAGGTGACCGGTCCCGCACCT  
GGAGCGCTCGCGAGAAGCGGCAGCTAGTGCGACTCCTGCAGGCGCGCAGGGCCAGCCGGAGCCGGACGC  
CACCGAGCTGGCCGGGAGCTGCGGGGCCGAGCGAGGCTGAGATCCGGGTCTTCTCCAGCAGCTCAAG  
GGCCGCTAGCCCGGAGGCCATTCAGAAAGTGCATCCGGGTGGCCTTCAGGGACCAAGGCGCCGGGAGG  
CACAGCCCCAGCCCCATAGAGGTCTGGACGGATCTGGCTGAGAAGATAACAGGGCCACTGGAAGAAGC  
CCTGGCAGTGGCTTTCTCGCAGGTGCTCACCATCGCGGCCACGGAACCGGTCAACCCTCCTGCACTCCAAG  
CCCCCAAGCCACGCGAGGCCCTGGAAAGCCTTTGCTCCTGAGCGCCCTGGAGGACAGGAAGACCCCG  
CCCCTGAAATACCTAGCTCTGCCCTGCTGCACCTAGCTCCGCACCCAGGACTCCTGACCCTGCCCTGA  
GAACTTCTGAGTCGTGGCTGGTCCCTCCACTGAAGAAGACTTTGCTGTGGACTTTGAGAAGATCTAC  
AAGTACTTGTCTCTGTCTCCGAAGTGGCCGAGCCCCGAGCTCTCAGCAGCTGAGTCCGCTGTGGTCC  
TCGACCTGCTCATGTCACTTCCAGAGGAGCTGCCACTCCTGCCCTGCACAGCCCTGGTTGAGCATATGAC  
GGAGACGTACCTACGCTGACAGCCCCCAGCCATTCCCGCTGGAGGGAGCCTGGGCTGCAGCAGAA  
GGGGATGGGCTGGCTCCAAGGCACAGAGGAGACCCCCAGCCACCGAGAAGGCCGAGCACAGCGAAC  
TGAATCGCCTTGGCAAGCAGCTGGGATCTGTCCCTGAACCCGTTCTGGTGCCCTGGAGCTTCTGGG  
TCGGGCAGCCACCCTGCCAGG

**ACGCGT**ACGCGGCCGCTCGAGCAGAACTCATCTCAGAAGAGGATCTGGCAGCAAATGATATCCTGGATT  
ACAAGGATGACGACGATAAGGTTTAA



[View online »](#)

**Protein Sequence:** >RC204157 protein sequence  
Red=Cloning site Green=Tags(s)

MKPPPRRAAPARYLGEVTGPATWSAREKRQLVRLQARQGQPEPDATLARELRGRSEAEIRVFLQQLK  
 GRVAREAIQKVHPGGLQGPRRREAQPPAPIEVWTDLAEKITGPLEEALAVAFSQVLTIAATEPVTLLHSK  
 PPKPTQARGKPLLLSAPGGQEDPAPEIPSSAAPSSAPRTPDPAPEKPESSAGPSTEEDFAVDFEKIY  
 KYLSSVSRSGRSPELAAESAVVLDLLMSLPEELPLLPCTALVEHMTETYLRLTAPQPIAGGSLGPAAE  
 GDGAGSKAPEETPPATEKAEHSELKSPWQAAGICPLNPFLVPLELLGRAATPAR

TRTRPLEQKLISEEDLAANDILDYKDDDDKV

**Chromatograms:** [https://cdn.origene.com/chromatograms/mk6568\\_c12.zip](https://cdn.origene.com/chromatograms/mk6568_c12.zip)

**Restriction Sites:** SgfI-MluI

**Cloning Scheme:**



**ACCN:** NM\_003083

**ORF Size:** 1002 bp

**OTI Disclaimer:** The molecular sequence of this clone aligns with the gene accession number as a point of reference only. However, individual transcript sequences of the same gene can differ through naturally occurring variations (e.g. polymorphisms), each with its own valid existence. This clone is substantially in agreement with the reference, but a complete review of all prevailing variants is recommended prior to use. [More info](#)

**OTI Annotation:** This clone was engineered to express the complete ORF with an expression tag. Expression varies depending on the nature of the gene.

**Components:** The ORF clone is ion-exchange column purified and shipped in a 2D barcoded Matrix tube containing 10ug of transfection-ready, dried plasmid DNA (reconstitute with 100 ul of water).

**Reconstitution Method:**

1. Centrifuge at 5,000xg for 5min.
2. Carefully open the tube and add 100ul of sterile water to dissolve the DNA.
3. Close the tube and incubate for 10 minutes at room temperature.
4. Briefly vortex the tube and then do a quick spin (less than 5000xg) to concentrate the liquid at the bottom.
5. Store the suspended plasmid at -20°C. The DNA is stable for at least one year from date of shipping when stored at -20°C.

**RefSeq:** [NM\\_003083.4](#)

**RefSeq Size:** 1561 bp

**RefSeq ORF:** 1005 bp

**Locus ID:** 6618

**UniProt ID:** [Q13487](#)

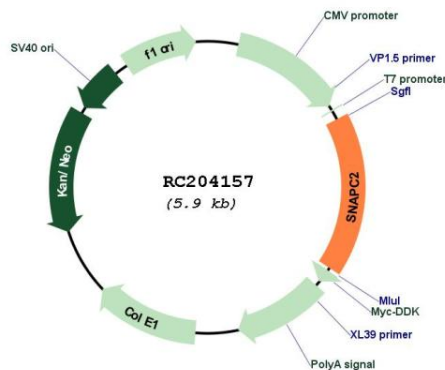
**Cytogenetics:** 19p13.2

**Protein Families:** Transcription Factors

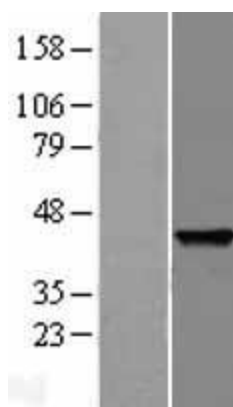
**MW:** 35.6 kDa

**Gene Summary:** This gene encodes a subunit of the snRNA-activating protein complex which is associated with the TATA box-binding protein. The encoded protein is necessary for RNA polymerase II and III dependent small-nuclear RNA gene transcription. Alternative splicing results in multiple transcript variants. [provided by RefSeq, Nov 2009]

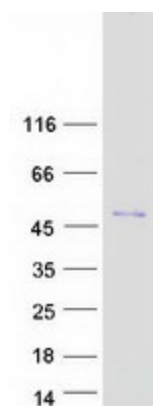
### Product images:



Circular map for RC204157



Western blot validation of overexpression lysate (Cat# [LY418914]) using anti-DDK antibody (Cat# [TA50011-100]). Left: Cell lysates from untransfected HEK293T cells; Right: Cell lysates from HEK293T cells transfected with RC204157 using transfection reagent MegaTran 2.0 (Cat# [TT210002]).



Coomassie blue staining of purified SNAPC2 protein (Cat# [TP304157]). The protein was produced from HEK293T cells transfected with SNAPC2 cDNA clone (Cat# RC204157) using MegaTran 2.0 (Cat# [TT210002]).