

Product datasheet for RC204150

EMAP II (AIMP1) (NM_004757) Human Tagged ORF Clone

Product data:

Product Type:	Expression Plasmids
Product Name:	EMAP II (AIMP1) (NM_004757) Human Tagged ORF Clone
Tag:	Myc-DDK
Symbol:	EMAP II
Synonyms:	EMAP2; EMAPII; HLD3; p43; SCYE1
Mammalian Cell Selection:	Neomycin
Vector:	pCMV6-Entry (PS100001)
E. coli Selection:	Kanamycin (25 ug/mL)
ORF Nucleotide Sequence:	>RC204150 ORF sequence Red=Cloning site Blue=ORF Green=Tags(s)

TTTTGTAATACGACTCACTATAGGGCGCCGGGAATTCGTCGACTGGATCCGGTACCGAGGAGATCTGCC
GCC**CGATCGCC**

ATGGCAAATAATGATGCTGTTCTGAAGAGACTGGAGCAGAAGGGTGCAGAGGCAGATCAAATCATTGAAT
ATCTTAAGCAGCAAGTTTCTCTACTTAAGGAGAAAGCAATTTGCAGGCAACTTTGAGGGAAGAGAAGAA
ACTTCGAGTTGAAAATGCTAAACTGAAGAAAGAAATTGAAGAAGTAAACAAGAGCTAATTCAGGCAGAA
ATTCAAAATGGAGTGAAGCAAATACCATTTCCATCTGGTACTCCACTGCACGCTAATTCTATGGTTTCTG
AAAATGTGATACAGTCTACAGCAGTAACAACCGTATCTTCTGGTACCAAAGAACAGATAAAAAGGAGGAAC
AGGAGACGAAAAGAAAGCGAAAAGAGAAAATTGAAAAGAAAGGAGAGAAGAAGGAGAAAAAACAGCAATCA
ATAGCTGGAAAGTCCGACTCTAAGCCAATAGATGTTTCCCGTCTGGATCTTCGAATTGGTTGCATCATAA
CTGCTAGAAAACACCCTGATGCAGATTCTTTGTATGTGGAAGAAGTAGATGTCGGAGAAATAGCCCCAAG
GACAGTTGTCAAGTGGCCTGGTGAATCATGTTTCTTGAACAGATGCAAAATCGGATGGTGAATTTACTT
TGTAACCTGAAACCTGCAAAGATGAGGGGAGTATTATCTCAAGCAATGGTCATGTGTGCTAGTTCACCAG
AGAAAATTGAAATCTTGGCTCCTCCAAATGGGTCTGTTCTGGAGACAGAATTACTTTTGATGCTTTCCC
AGGAGAGCCTGACAAGGAGCTGAATCCTAAGAAGAAGATTTGGGAGCAGATCCAGCCTGATCTTCACACT
AATGATGAGTGTGTGGCTACATACAAAGGAGTTCCTTTGAGGTGAAAGGAAGGAGTATGTAGGGCTC
AAACCATGAGCAACAGTGAATCAAA

ACGCGTACGCGGCCGCTCGAGCAGAAACTCATCTCAGAAGAGGATCTGGCAGCAAATGATATCCTGGATT
ACAAGGATGACGACGATAAGGTTTAA



[View online »](#)

Protein Sequence: >RC204150 protein sequence
Red=Cloning site Green=Tags(s)

MANNDAVLKRLEQKGAADQIEIYLKQVSLLEKAILQATLREEKLRVENAKLKEIEELKQELIQAE
 IQNGVKQIPFPGTPLHANSMVSENVISQSTAVTTVSSGTKEQIKGGTGDEKKAKEKIEKKGEKKEKKQS
 IAGSADSKPIDVSRDLRIGCIIITARKHPDADSLYVEEVDVGEIAPRTVVSGLVNHVPLEQMQRNVILL
 CNLKPAKMRGVL SQAMVMCASSPEKIEILAPPNGSVPGDRITFDAFPGEKELNPKKKIWEQIQPDLHT
 NDECVATYKGVPFVKGKGVCRQAQTMSNSGIK

TRTRPLEQKLISEEDLAANDILDYKDDDDKV

Chromatograms: https://cdn.origene.com/chromatograms/mk6796_a06.zip

Restriction Sites: SgfI-MluI

Cloning Scheme:



ACCN: NM_004757

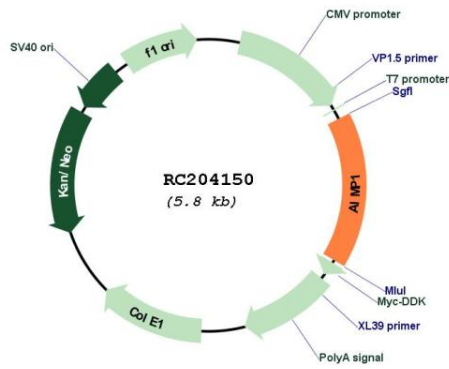
ORF Size: 936 bp

OTI Disclaimer: Due to the inherent nature of this plasmid, standard methods to replicate additional amounts of DNA in E. coli are highly likely to result in mutations and/or rearrangements. Therefore, OriGene does not guarantee the capability to replicate this plasmid DNA. Additional amounts of DNA can be purchased from OriGene with batch-specific, full-sequence verification at a reduced cost. Please contact our customer care team at custsupport@origene.com or by calling 301.340.3188 option 3 for pricing and delivery.

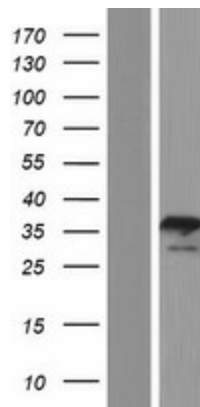
The molecular sequence of this clone aligns with the gene accession number as a point of reference only. However, individual transcript sequences of the same gene can differ through naturally occurring variations (e.g. polymorphisms), each with its own valid existence. This clone is substantially in agreement with the reference, but a complete review of all prevailing variants is recommended prior to use. [More info](#)

OTI Annotation:	This clone was engineered to express the complete ORF with an expression tag. Expression varies depending on the nature of the gene.
Components:	The ORF clone is ion-exchange column purified and shipped in a 2D barcoded Matrix tube containing 10ug of transfection-ready, dried plasmid DNA (reconstitute with 100 ul of water).
Reconstitution Method:	<ol style="list-style-type: none">1. Centrifuge at 5,000xg for 5min.2. Carefully open the tube and add 100ul of sterile water to dissolve the DNA.3. Close the tube and incubate for 10 minutes at room temperature.4. Briefly vortex the tube and then do a quick spin (less than 5000xg) to concentrate the liquid at the bottom.5. Store the suspended plasmid at -20°C. The DNA is stable for at least one year from date of shipping when stored at -20°C.
RefSeq:	<u>NM_004757.3</u>
RefSeq Size:	3159 bp
RefSeq ORF:	939 bp
Locus ID:	9255
UniProt ID:	<u>Q12904</u>
Cytogenetics:	4q24
Domains:	tRNA_bind
Protein Families:	Druggable Genome
MW:	34.4 kDa
Gene Summary:	The protein encoded by this gene is a cytokine that is specifically induced by apoptosis, and it is involved in the control of angiogenesis, inflammation, and wound healing. The release of this cytokine renders the tumor-associated vasculature sensitive to tumor necrosis factor. The precursor protein is identical to the p43 subunit, which is associated with the multi-tRNA synthetase complex, and it modulates aminoacylation activity of tRNA synthetase in normal cells. This protein is also involved in the stimulation of inflammatory responses after proteolytic cleavage in tumor cells. Multiple transcript variants encoding different isoforms have been found for this gene. A pseudogene has been identified on chromosome 20. [provided by RefSeq, Dec 2008]

Product images:



Circular map for RC204150



Western blot validation of overexpression lysate (Cat# [LY428077]) using anti-DDK antibody (Cat# [TA50011-100]). Left: Cell lysates from untransfected HEK293T cells; Right: Cell lysates from HEK293T cells transfected with [RC226909] using transfection reagent MegaTran 2.0 (Cat# [TT210002]).