

Product datasheet for **RC204148**

HDGF (NM_004494) Human Tagged ORF Clone

Product data:

Product Type:	Expression Plasmids
Product Name:	HDGF (NM_004494) Human Tagged ORF Clone
Tag:	Myc-DDK
Symbol:	HDGF
Synonyms:	HMG1L2
Mammalian Cell Selection:	Neomycin
Vector:	pCMV6-Entry (PS100001)
E. coli Selection:	Kanamycin (25 ug/mL)
ORF Nucleotide Sequence:	>RC204148 ORF sequence Red=Cloning site Blue=ORF Green=Tags(s)

TTTGTGTAATACGACTCACTATAGGGCGGCCGGAATTCGTCGACTGGATCCGGTACCGAGGAGATCTGCC
GCC**CGATCGC**C

ATGTCGCGATCCAACCGGCAGAAGGAGTACAAATGCGGGGACCTGGTGTTGCGCAAGATGAAGGGCTACC
CACACTGGCCGGCCCGGATTGACGAGATGCCTGAGGCTGCCGTGAAATCAACAGCCAACAAATACCAAGT
CTTTTTTTTCGGGACCCACGAGACGGCATTCTGGGCCCCAAAGACCTCTCCCTTACGAGGAATCCAAG
GAGAAGTTTGGCAAGCCCAACAAGAGGAAAGGGTTCAGCGAGGGGCTGTGGGAGATCGAAAACAACCTA
CTGTCAAGGCTTCCGGCTATCAGTCCTCCAGAAAAAGAGCTGTGTGGAAGAGCCTGAACCAGAGCCCGA
AGCTGCAGAGGGTGACGGTGATAAGAAGGGGAATGCAGAGGGCAGCAGCGACGAGGAAGGAAGCTGGTC
ATTGATGAGCCAGCCAAGGAGAAGAACGAGAAAGGAGCGTTGAAGAGGAGAGCAGGGGACTTGCTGGAGG
ACTCTCTAAACGTCCCAAGGAGGCAGAAAACCTGAAGGAGAGGAGAAGGAGGCAGCCACCTTGGAGGT
TGAGAGGCCCCCTTCTATGGAGGTGAAAAAGATAGCACCCCTCTGAGCCCGGCTCTGGCCGGGGGCT
CCCCAAGAGGAAGAAGAAGAGGAGGATGAAGAGGAAGAGGCTACCAAGGAAGATGCTGAGGCCCAAGCA
TCAGAGATCATGAGAGCCTG

ACGCGTACGCGGCCGCTCGAGCAGAACTCATCTCAGAAGAGGATCTGGCAGCAAATGATATCTGGATT
ACAAGGATGACGACGATAAGGTTTAA



[View online »](#)

Protein Sequence: >RC204148 protein sequence
 Red=Cloning site Green=Tags(s)

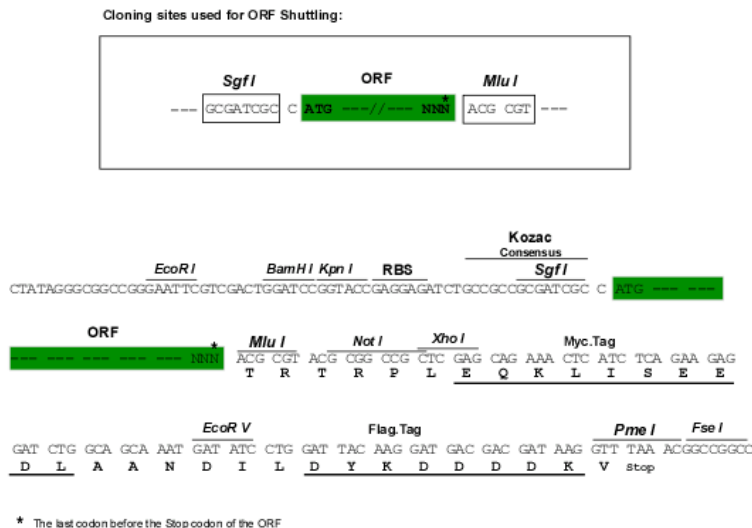
MSRSNRQKEYKCGDLVFAKMKGYPHWPARIDEMPEAAVKSTANKYQVFFFGTHETAFLGPKDLFPYEESK
 EKFGKPNKRKGFSEGLWEIENNPVKASGYQSSQKKSCVEEPEPEPEAAEGDGDKKGNAGSSDEEGKL
 IDEPAKEKNEKGALKRRAGDLLDSPKRPKEAENPEGEEKEAATLEVERPLPMEVEKNSTPSEPGSGRGP
 PQEEEEEEDEEEATKEDAEAPGIRDHESL

TRTRPLEQKLISEEDLAANDILDYKDDDDKV

Chromatograms: https://cdn.origene.com/chromatograms/mk6283_c03.zip

Restriction Sites: SgfI-MluI

Cloning Scheme:



ACCN: NM_004494

ORF Size: 720 bp

OTI Disclaimer: The molecular sequence of this clone aligns with the gene accession number as a point of reference only. However, individual transcript sequences of the same gene can differ through naturally occurring variations (e.g. polymorphisms), each with its own valid existence. This clone is substantially in agreement with the reference, but a complete review of all prevailing variants is recommended prior to use. [More info](#)

OTI Annotation: This clone was engineered to express the complete ORF with an expression tag. Expression varies depending on the nature of the gene.

Components: The ORF clone is ion-exchange column purified and shipped in a 2D barcoded Matrix tube containing 10ug of transfection-ready, dried plasmid DNA (reconstitute with 100 ul of water).

Reconstitution Method:

1. Centrifuge at 5,000xg for 5min.
2. Carefully open the tube and add 100ul of sterile water to dissolve the DNA.
3. Close the tube and incubate for 10 minutes at room temperature.
4. Briefly vortex the tube and then do a quick spin (less than 5000xg) to concentrate the liquid at the bottom.
5. Store the suspended plasmid at -20°C. The DNA is stable for at least one year from date of shipping when stored at -20°C.

RefSeq: [NM_004494.3](#)

RefSeq Size: 2397 bp

RefSeq ORF: 723 bp

Locus ID: 3068

UniProt ID: [P51858](#)

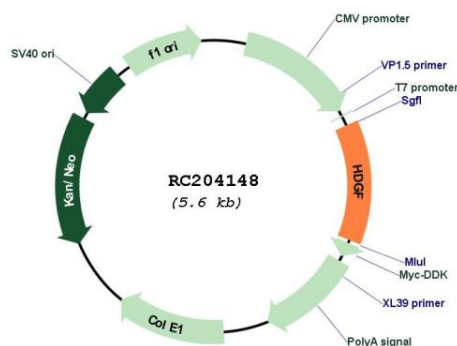
Cytogenetics: 1q23.1

Domains: PWWP

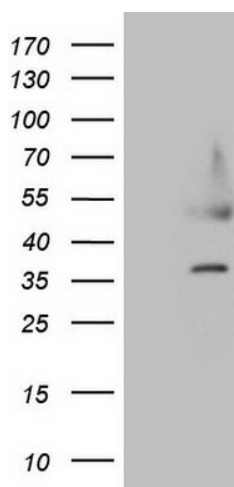
MW: 26.8 kDa

Gene Summary: This gene encodes a member of the hepatoma-derived growth factor family. The encoded protein has mitogenic and DNA-binding activity and may play a role in cellular proliferation and differentiation. High levels of expression of this gene enhance the growth of many tumors. This gene was thought initially to be located on chromosome X; however, that location has been determined to correspond to a related pseudogene. Alternatively spliced transcript variants encoding distinct isoforms have been described. [provided by RefSeq, Jan 2016]

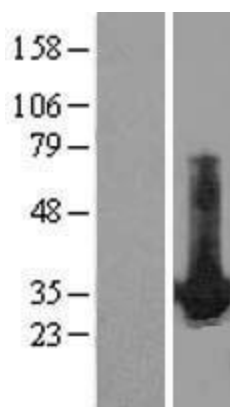
Product images:



Circular map for RC204148



HEK293T cells were transfected with the pCMV6-ENTRY control (Cat# [PS100001], Left lane) or pCMV6-ENTRY HDGF (Cat# RC204148, Right lane) cDNA for 48 hrs and lysed. Equivalent amounts of cell lysates (5 ug per lane) were separated by SDS-PAGE and immunoblotted with anti-HDGF (Cat# [TA808926])(1:500). Positive lysates [LY417948] (100ug) and [LC417948] (20ug) can be purchased separately from OriGene.



Western blot validation of overexpression lysate (Cat# [LY417948]) using anti-DDK antibody (Cat# [TA50011-100]). Left: Cell lysates from untransfected HEK293T cells; Right: Cell lysates from HEK293T cells transfected with RC204148 using transfection reagent MegaTran 2.0 (Cat# [TT210002]).