

Product datasheet for **RC204147**

RIN1 (NM_004292) Human Tagged ORF Clone

Product data:

Product Type:	Expression Plasmids
Product Name:	RIN1 (NM_004292) Human Tagged ORF Clone
Tag:	Myc-DDK
Symbol:	RIN1
Mammalian Cell Selection:	Neomycin
Vector:	pCMV6-Entry (PS100001)
E. coli Selection:	Kanamycin (25 ug/mL)



[View online »](#)

ORF Nucleotide Sequence:

>RC204147 representing NM_004292
 Red=Cloning site Blue=ORF Green=Tags(s)

TTTTGTAATACGACTCACTATAGGGCGGCCGGGAATTCGTCGACTGGATCCGGTACCGAGGAGATCTGCC
 GCC**CGGATCGCC**

ATGGAAGCCCTGGAGAGTCAGGCGGGCTCTCCTGGAGCCCCAGCCGTCCAGTTCCTACTACTGGG
 ACCTGGCGAGAGAAAAGCCAGCCAGGACCCACTGTATGACGTGCCAATGCCAGCGGGCAGGCAGG
 CGGGCCGAGCGGCCGGGGCGCTTGTGAGCCTGCGGGAGCGCCTGCTGCTCACCCGGCCGTGTGGCTG
 CAGCTGCAAGCCAACGCAGCGGCCCACTGCACATGCTGAGGACCGAGCCCCGGGGACGTTCTCGTGC
 GGAAATCTAACACCCGCCAGTGCCAGGCCCTGTGCATGCGGTTGCCTGAAGCCAGTGGCCCTCCTCGT
 CTCCAGCCACTACATCCTGGAGAGCCCTGGCGGCTCTCCTTGGAGGGCTCGGAGCTCATGTTCCAGAC
 CTAGTCCAGCTCATCTGTGCCTACTGCCACACCCGGGACATCCTTCTCCTCCCGTGCAGCTCCCAGAG
 CCATCCACCACGCAGCCACTCACAAGAGCTGGAGGCCATCTCCATCTGGGCATTGAGTCTGGAGCTC
 CTCCTCAACATCAAGGCTCAGCGGGGCCGGCTGGAGGCCAGTGTGCCAGCTGAAGGCCCGTCC
 CCTCAAGAGCTGGACCAGGGCACCGGAGCCGCTTGTGCTTCTCAACCCCTGTTCCCGGGGACCTAG
 GGCCACCAAGCGGGAGAAATCAAGAGAAGCTTCAAAGTGCAGCTGTCCACAGAGACCTCCAGCCCT
 GTCTCCACCTGCCGTGCCACCTCCCCCGTCCCGTGTGCCAGGGGAGTCCCAGCCAGACAGAGCGG
 CTGCCCTTGGCAGTGTACGGAGGGAGAGCTCAGTGGGGTACCGCGTCCAGCAGGCAGTGGCCCTA
 GCCTTCCGCCTATGCCCTCCCTCAAAGAGTGGACTGCGGCTCCCCAGCAGCTCCGAGGAGGAGGGGT
 GCCAGGGTCCCGGGGAGCCAGCGACCTACCCACCTGGGCCCGGACGACCTCTGCTTCGGTCCATG
 AGCGCCGCTTCTGCTCCCTACTGGCACCGGAGCGGCAGTGGCCGGCTGCGGCAGCACTGATGCAGG
 ACCGACACAGCCCGGGCCAGCTGGTGCAGGACCTACTGACCCAGTGGGGCTGGGCCGAGCCCA
 GGAGCTGCAGGGCATCCGTGAGCGCTGAGCCGGGCCCGGCCATGCTGAGTGGGAGCTGGGCCCTGAG
 AAGCTGCTGTCGCTAAGAGGCTGGAACATGTCCTGGAGAAGTATTGCATTGCTCTGTGCTCAAGCCTC
 TCCGGCCATCCTGGCAGCCGCTGCGGCGCGGCTTGCAGCAGCGCTCCCTGGGCCGCTAGCTGA
 GGGCTCCGCTGGCCCGGGCCAGGGCCCGGAGCCTTCCGGTCCACCTGAGCCTGCCCTCCCAGTA
 GAGTTGGAGCAAGTGGCCAGAAGCTGCTGCAGCTGCTCCGCACCTACTCACCCAGCGCCAGGTCAAGC
 GGCTCCTGCAGGCCTGCAAGCTGCTTACATGGCCCTGAGGACCCAGGAAGGGGAGGGCGGGTGC
 CGAGTTCCCTGCTGCTGAGCCTGCTTGGCCACTGTGACCTTCTGAGCTGCTGCTGGAGGCCGAG
 TACATGTCGGAGCTGCTGGAGCCAGCCTGCTTACTGGAGAGGGTGGCTACTACCTGACCAGCCTCTG
 CCAGCCTGGCCCTGCTGAGTGGCTGGTCCAGGCCACACCCCTCCACTGAGCCCGTGCAGGAGCTACG
 GCGCTCCCTCAGCCTCTGGGAGCAGCGCCGCTGCTGCCACCCACTGCTTCCAGCACCTCCTCCGAGTA
 GCCTATCAGGATCCCAGCAGTGGCTGCACCTCCAAGACCTGGCCGTGCCCCAGAACCTCGATTGCCA
 CCCTGAACCAGCTCTGTGCCACCAAGTCCGAGTGACCCAGCCCAACTTTTGGCTCTTCTGTACAA
 GGAGCAGGGTACCACCGCTGCCCTGGGGCCCTGGCCACAGGCTGCCACCACTGGCTACCTCGTC
 TACCGCCGGGCGGAGTGGCTGAGACCCAGGGGCTGTGACAGAGGAGGAGGGCAGTGGGCAGTCAGAGG
 CAAGAAGCAGAGGGGAGGAGCAAGGGTCCAGGGAGATGGGATGCTGGGGTCAAAGCCAGCCCCAGGGA
 CATTGGGAACAGTCTGAGACAAGTCTGAAGGGGGCCAGGGTCAAGCCAGGAAGGCCCTGCTCAGCCA
 GGGGAACCAAGGCAGAGGGAAGCCGGGACAGAGGAG

ACGCGTACGCGGCCGCTCGAGCAGAACTCATCTCAGAAGAGGATCTGGCAGCAAATGATATCCTGGATT
 ACAAGGATGACGACGATAAGGTTTAA

Protein Sequence: >RC204147 representing NM_004292
 Red=Cloning site Green=Tags(s)

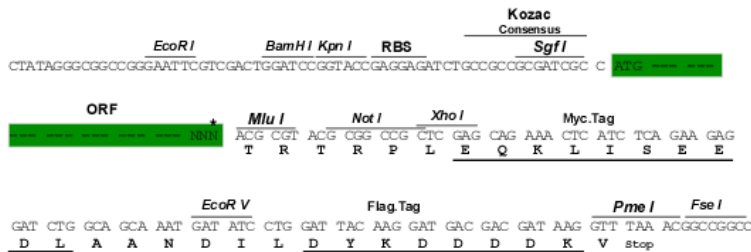
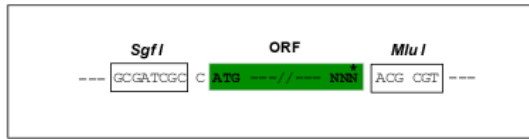
MESPGESGAGSPGAPSPSSFTTGHAREKPAQDPLYDVPNASGGQAGGPQRGRVSVLRERLLLTRPVWL
 QLQANAAAALHMLRTEPPGTFLVRKSNTRQCQALCMRLPEASGPSFVSSHYILESPGGVSLEGSELMFPD
 LVQLICAYCHTRDILLPLQLPRAIHHAAATHKELEAISHLGIWFSSSLNIKAQRGPAGGPVLPQLKARS
 PQELDQGTGAALCFNPLFPDGLPTKREKFKRSFKVRVSTETSSPLSPPAVPPPPVPLPGAVPSQTER
 LPPCQLLRRESSVGYRVPAGSGPSLPPMPSLQEVDGSPSSSEEEGVPGSRGSPATSPHLGRRRPLLRSM
 SAAFCSLLAPERQVGRAAAALMQDRHTAAGQLVQDLLTQVRAGPEPQELQGIRQALSRARAMLSAELGPE
 KLLSPKRLEHVLEKSLHCSVLKPLRPILAARLRRLAADGSLGRLAEGLRLARAQGPAGFSGHLSLPSV
 ELEQVRQKLLQLLRTYSPSAQVKRLLQACKLLYMALRTQEGEGAGADEFLPLLSLVLAHCDLPELLLEAE
 YMSELLEPSLLTGEGGYLTSLSASLALLSGLGQAHTLPLSPVQELRRSLSLWEQRRLPATHCFQHLLRV
 AYQDPSSGCTSKTLAVPPEASIALNLQCATKFRVTQPNTFGLFLYKEQGYHRLPPGALAHRLPTTGYL
 YRRAEWPETQGAVTEEEGSGQSEARSRGEEQGCQGDGDAGVKASPRDIREQSETTAEGGQQAQEGPAQP
 GEPEAEGSRAAEE

TRTRPLEQKLISEEDLAANDILDYKDDDDKV

Restriction Sites: SgfI-MluI

Cloning Scheme:

Cloning sites used for ORF Shutting:



* The last codon before the Stop codon of the ORF

ACCN: NM_004292

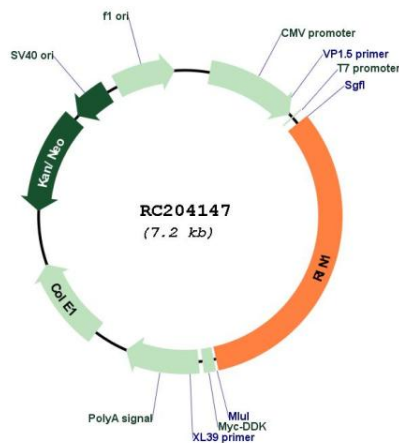
ORF Size: 2349 bp

OTI Disclaimer: The molecular sequence of this clone aligns with the gene accession number as a point of reference only. However, individual transcript sequences of the same gene can differ through naturally occurring variations (e.g. polymorphisms), each with its own valid existence. This clone is substantially in agreement with the reference, but a complete review of all prevailing variants is recommended prior to use. [More info](#)

OTI Annotation: This clone was engineered to express the complete ORF with an expression tag. Expression varies depending on the nature of the gene.

- Components:** The ORF clone is ion-exchange column purified and shipped in a 2D barcoded Matrix tube containing 10ug of transfection-ready, dried plasmid DNA (reconstitute with 100 ul of water).
- Reconstitution Method:**
1. Centrifuge at 5,000xg for 5min.
 2. Carefully open the tube and add 100ul of sterile water to dissolve the DNA.
 3. Close the tube and incubate for 10 minutes at room temperature.
 4. Briefly vortex the tube and then do a quick spin (less than 5000xg) to concentrate the liquid at the bottom.
 5. Store the suspended plasmid at -20°C. The DNA is stable for at least one year from date of shipping when stored at -20°C.
- RefSeq:** [NM_004292.3](#)
- RefSeq Size:** 2698 bp
- RefSeq ORF:** 2352 bp
- Locus ID:** 9610
- UniProt ID:** [Q13671](#)
- Cytogenetics:** 11q13.2
- MW:** 83.9 kDa
- Gene Summary:** Ras effector protein, which may serve as an inhibitory modulator of neuronal plasticity in aversive memory formation. Can affect Ras signaling at different levels. First, by competing with RAF1 protein for binding to activated Ras. Second, by enhancing signaling from ABL1 and ABL2, which regulate cytoskeletal remodeling. Third, by activating RAB5A, possibly by functioning as a guanine nucleotide exchange factor (GEF) for RAB5A, by exchanging bound GDP for free GTP, and facilitating Ras-activated receptor endocytosis.[UniProtKB/Swiss-Prot Function]

Product images:



Circular map for RC204147