

Product datasheet for **RC204146**

FRA2 (FOSL2) (NM_005253) Human Tagged ORF Clone

Product data:

Product Type: Expression Plasmids
Product Name: FRA2 (FOSL2) (NM_005253) Human Tagged ORF Clone
Tag: Myc-DDK
Symbol: FRA2
Synonyms: FRA2
Mammalian Cell Selection: Neomycin
Vector: pCMV6-Entry (PS100001)
E. coli Selection: Kanamycin (25 ug/mL)
ORF Nucleotide Sequence: >RC204146 ORF sequence
Red=Cloning site Blue=ORF Green=Tags(s)

TTTTGTAATACGACTCACTATAGGGCGGCCGGGAATTCGTCGACTGGATCCGGTACCGAGGAGATCTGCC
GCC**CGGATCGCC**

ATGTACCAGGATTATCCCGGGAACCTTTGACACCTCGTCCCGGGGCAGCAGCGGCTCTCTGCGCACGCCG
AGTCCTACTCCAGCGGCGGCGGGCCAGCAGAAATTCGGGTAGATATGCCTGGCTCAGGCAGTGCATT
CATCCCCACCATCAACGCCATCACGACCAGCCAGGACCTGCAGTGGATGGTGCAGCCACAGTGATCACC
TCCATGTCCAACCCATACCCTCGCTCGCACCCCTACAGCCCCCTGCCGGGCTGGCTCTGTCCCTGGAC
ACATGGCCCTCCCAAGACCTGGCGTGATCAAGACCATTGGCACCACCGTGGGCCGAGGAGAGATGA
GCAGCTGTCTCCTGAAGAGGAGGAGAAGCGTCGCATCCGGCGGGAGAGGAACAAGCTGGCTGCAGCCAAG
TGCCGGAACCGACGCGGGAGCTGACAGAGAAGCTGCAGGCGGAGACAGAGGAGCTGGAGGAGGAGAAGT
CAGGCCTGCAGAAGGAGATTGCTGAGCTGCAGAAGGAGAAGGAGAAGCTGGAGTTCATGTTGGTGGCTCA
CGGCCAGTGTGCAAGATTAGCCCCGAGGAGCGCCGATCGCCCCAGCCCCTGGGCTGCAGCCATGCGC
AGTGGGGTGGCTCGGTGGGCGCTGTAGTGGTAAACAGGAGCCCCTGGAAGAGGACAGCCCCTCGTCT
CGTCGGCGGGGCTGGACAAGGCCAGCGCTCTGTATCAAGCCCATCAGCATTGCTGGGGCTTCTACGG
TGAGGAGCCCCGACACCCCCATCGTGGTGACCTCCACACCTGCTGTACTCCGGGCACCTCGAACCTC
GTCTTACCTATCCTAGCGTCTGGAGCAGGAGTCACCCGCATCTCCCTCCGAATCCTGCTCCAAGGCTC
ACCGCAGAAGCAGTAGCAGCGGGGACCAATCATCAGACTCCTTGAACCTCCCCACTCTGCTGGCTCTG

ACGCGTACGCGGCCGCTCGAGCAGAACTCATCTCAGAAGAGGATCTGGCAGCAATGATATCCTGGATT
ACAAGGATGACGACGATAAGGTTTAA



[View online »](#)

Protein Sequence: >RC204146 protein sequence
Red=Cloning site Green=Tags(s)

MYQDYPGNFDTSSRGSSGSPAHAESYSSGGGQKFRVDMPGSGSAFIPTINAITTSQDLQWMVQPTVIT
 SMSNPYPRSHYPYPLPGLASVPGHMLPRPGVIKTI GTTVGRRRRDEQLSPEEEKRRIRRENKLA
 CRNRRRELTEKLQAEETEELEEEKSGLQKEIAELQKEKEKLEFMLVAHGVPCKISPEERRSPPAPGLQPMR
 SGGGSVGAVVVKQEPLEEDSPSSSSAGLDKAQRSVIKPI SIAGGFYGEELHTPIVVTSTPAVTPGTSNL
 VFTYPSVLEQESPASPSESCSKAHRSSSSSGDQSSDSLNSPTLLAL

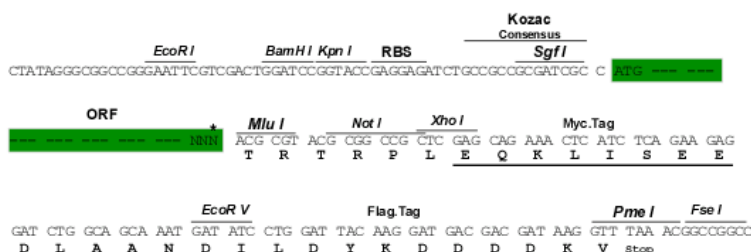
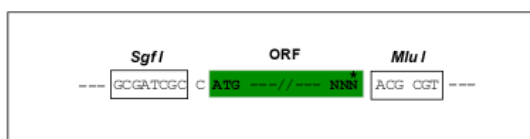
TRTRPLEQKLISEEDLAANDILDYKDDDDKV

Chromatograms: https://cdn.origene.com/chromatograms/mk6065_a06.zip

Restriction Sites: SgfI-MluI

Cloning Scheme:

Cloning sites used for ORF Shuttling:



* The last codon before the Stop codon of the ORF

ACCN: NM_005253

ORF Size: 978 bp

OTI Disclaimer: The molecular sequence of this clone aligns with the gene accession number as a point of reference only. However, individual transcript sequences of the same gene can differ through naturally occurring variations (e.g. polymorphisms), each with its own valid existence. This clone is substantially in agreement with the reference, but a complete review of all prevailing variants is recommended prior to use. [More info](#)

OTI Annotation: This clone was engineered to express the complete ORF with an expression tag. Expression varies depending on the nature of the gene.

Components: The ORF clone is ion-exchange column purified and shipped in a 2D barcoded Matrix tube containing 10ug of transfection-ready, dried plasmid DNA (reconstitute with 100 ul of water).

Reconstitution Method:

1. Centrifuge at 5,000xg for 5min.
2. Carefully open the tube and add 100ul of sterile water to dissolve the DNA.
3. Close the tube and incubate for 10 minutes at room temperature.
4. Briefly vortex the tube and then do a quick spin (less than 5000xg) to concentrate the liquid at the bottom.
5. Store the suspended plasmid at -20°C. The DNA is stable for at least one year from date of shipping when stored at -20°C.

RefSeq: [NM_005253.4](#)

RefSeq Size: 4015 bp

RefSeq ORF: 981 bp

Locus ID: 2355

UniProt ID: [P15408](#)

Cytogenetics: 2p23.2

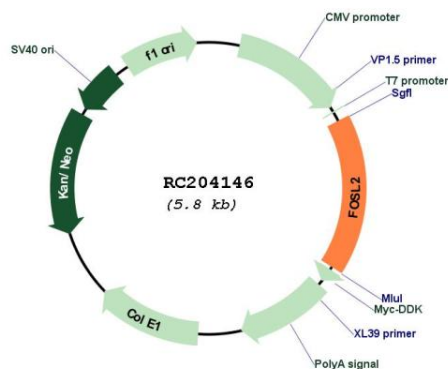
Domains: BRLZ

Protein Families: Druggable Genome, Transcription Factors

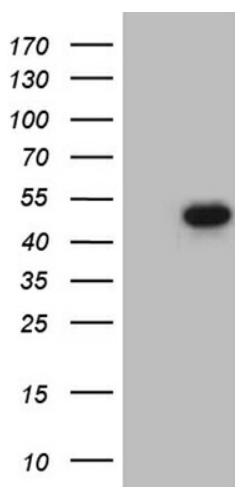
MW: 35.2 kDa

Gene Summary: The Fos gene family consists of 4 members: FOS, FOSB, FOSL1, and FOSL2. These genes encode leucine zipper proteins that can dimerize with proteins of the JUN family, thereby forming the transcription factor complex AP-1. As such, the FOS proteins have been implicated as regulators of cell proliferation, differentiation, and transformation. [provided by RefSeq, Jul 2014]

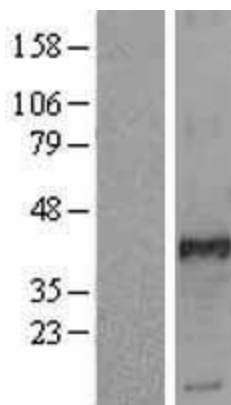
Product images:



Circular map for RC204146



HEK293T cells were transfected with the pCMV-ENTRY control (Cat# [PS100001], Left lane) or pCMV6-ENTRY FOSL2 (Cat# RC204146, Right lane) cDNA for 48 hrs and lysed. Equivalent amounts of cell lysates (5 ug per lane) were separated by SDS-PAGE and immunoblotted with anti-FOSL2 (Cat# [TA809660])(1:2000). Positive lysates [LY417421] (100ug) and [LC417421] (20ug) can be purchased separately from OriGene.



Western blot validation of overexpression lysate (Cat# [LY417421]) using anti-DDK antibody (Cat# [TA50011-100]). Left: Cell lysates from untransfected HEK293T cells; Right: Cell lysates from HEK293T cells transfected with RC204146 using transfection reagent MegaTran 2.0 (Cat# [TT210002]).