

Product datasheet for **RC204145**

SLC35B1 (NM_005827) Human Tagged ORF Clone

Product data:

Product Type:	Expression Plasmids
Product Name:	SLC35B1 (NM_005827) Human Tagged ORF Clone
Tag:	Myc-DDK
Symbol:	SLC35B1
Synonyms:	AXER; UGTREL1
Mammalian Cell Selection:	Neomycin
Vector:	pCMV6-Entry (PS100001)
E. coli Selection:	Kanamycin (25 ug/mL)
ORF Nucleotide Sequence:	>RC204145 ORF sequence Red=Cloning site Blue=ORF Green=Tags(s)

TTTTGTAATACGACTCACTATAGGGCGCCGGGAATTCGTCGACTGGATCCGGTACCGAGGAGATCTGCC
GCC**CGGATCGCC**

ATGGCCTCTAGCAGCTCCCTGGTGCCCGACCGGCTGCGCCTGCCGCTCTGCTTCCTGGGTGTCTTTGTCT
GCTATTTTTACTATGGGATCCTGCAGGAAAAGATAACAAGAGGAAAGTATGGGGAAGGAGCCAAGCAGGA
GACGTTACCTTTGCCTAACTTTGGTCTTCATTCAATGTGTGATCAATGCTGTGTTGCCAAGATCTTG
ATCCAGTTTTTTGACACTGCCAGGGTGGATCATACCCGGAGCTGGCTCTATGCTGCCTGTTCTATCTCCT
ATCTGGGTGCCATGGTCTCCAGCAATTCAGCACTACAGTTTGCAACTACCAACTCAGGTCCTTGGTAA
ATCCTGCAAGCCAATCCCAGTCATGCTCCTTGGGGTGACCCTCTTGAAGAAGAAGTACCCGTTGGCCAAG
TACCTGTGTGTGCTGTTAATTGTGGCTGGAGTGGCCCTTTTCATGTACAAACCAAGAAAGTTGTTGGGA
TAGAAGAACACACAGTCGGCTATGGAGAGCTACTTGTCTATTATCGCTGACCCTGGATGGACTGACTGG
TGTTTCCAGGACCACATGCGGGCTCATTACCAACAGGCTCCAACCACATGATGCTGAACATCAACCTT
TGGTCGACATTGCTGCTGGGAATGGGAATCCTGTTCACTGGGGAGCTCTGGGAGTTCTTGAGCTTTGCTG
AAAGGTACCCTGCCATCATCTATAACATCCTGCTCTTTGGGCTGACCAGTGCCCTGGGTCAGAGCTTCAT
CTTTATGACGGTTGTGTATTTTGGTCCCCTGACCTGCTCCATCATCACTACAACCTCGAAAGTTCTTCACA
ATTTTGGCCTCTGTGATCCTCTTCGCCAATCCCATCAGCCCCATGCAGTGGGTGGCAGCTGTGCTTGTGT
TCCTGGGTCCTTGGTCTTGATGCCAAGTTTGGGAAAGGAGCTAAGAAGACATCCAC

ACGCGTACGCGGCCGCTCGAGCAGAAACTCATCTCAGAAGAGGATCTGGCAGCAAATGATATCCTGGATT
ACAAGGATGACGACGATAAGGTTTAA



[View online »](#)

Protein Sequence: >RC204145 protein sequence
Red=Cloning site Green=Tags(s)

MASSSSLVPDRLRLPLCFLGVFVCYFYGILQEKITRGKYGEGAKQETTFALTLVFIQCVINAVFAKIL
 IQFFDTRVDHTRSWLYAACISYLGAMVSSNSALQFVNYPTQVLGKSCCKPIPVMLLGVTLKKKYPLAK
 YLCVLLIVAGVALFMYKPKKVVGIEEHTVGYGELLLLLSLTLDGLTGVSDHMRHAHYQTGSNHMMLNINL
 WSTLLLGMGILFTGELWEFLSFAERYPAIYNILLFGLTALGQSFIFMTVVYFGPLTCSIITTRKFFT
 ILASVILFANPISPMQWVGTVLVFLGLGLDAKFGKGAKKTSH

TRTRPLEQKLISEEDLAANDILDYKDDDDKV

Chromatograms: https://cdn.origene.com/chromatograms/mk6058_e01.zip

Restriction Sites: SgfI-MluI

Cloning Scheme:



ACCN: NM_005827

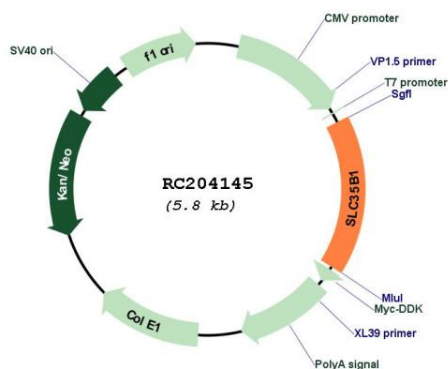
ORF Size: 966 bp

OTI Disclaimer: Due to the inherent nature of this plasmid, standard methods to replicate additional amounts of DNA in E. coli are highly likely to result in mutations and/or rearrangements. Therefore, OriGene does not guarantee the capability to replicate this plasmid DNA. Additional amounts of DNA can be purchased from OriGene with batch-specific, full-sequence verification at a reduced cost. Please contact our customer care team at custsupport@origene.com or by calling 301.340.3188 option 3 for pricing and delivery.

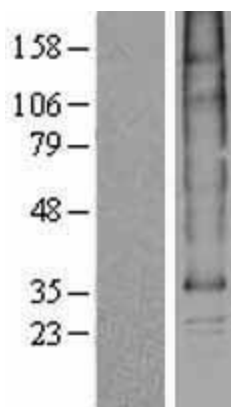
The molecular sequence of this clone aligns with the gene accession number as a point of reference only. However, individual transcript sequences of the same gene can differ through naturally occurring variations (e.g. polymorphisms), each with its own valid existence. This clone is substantially in agreement with the reference, but a complete review of all prevailing variants is recommended prior to use. [More info](#)

OTI Annotation:	This clone was engineered to express the complete ORF with an expression tag. Expression varies depending on the nature of the gene.
Components:	The ORF clone is ion-exchange column purified and shipped in a 2D barcoded Matrix tube containing 10ug of transfection-ready, dried plasmid DNA (reconstitute with 100 ul of water).
Reconstitution Method:	<ol style="list-style-type: none">1. Centrifuge at 5,000xg for 5min.2. Carefully open the tube and add 100ul of sterile water to dissolve the DNA.3. Close the tube and incubate for 10 minutes at room temperature.4. Briefly vortex the tube and then do a quick spin (less than 5000xg) to concentrate the liquid at the bottom.5. Store the suspended plasmid at -20°C. The DNA is stable for at least one year from date of shipping when stored at -20°C.
RefSeq:	NM_005827.1 , NP_005818.1
RefSeq Size:	1621 bp
RefSeq ORF:	969 bp
Locus ID:	10237
UniProt ID:	P78383
Cytogenetics:	17q21.33
Domains:	DUF6
Protein Families:	Transmembrane
MW:	35.7 kDa
Gene Summary:	This gene encodes a nucleotide sugar transporter which is a member of solute carrier family 35. The transporters in this family are highly conserved hydrophobic proteins with multiple transmembrane domains. Alternative splicing results in multiple transcript variants encoding different isoforms. [provided by RefSeq, Jul 2013]

Product images:



Circular map for RC204145



Western blot validation of overexpression lysate (Cat# [LY401770]) using anti-DDK antibody (Cat# [TA50011-100]). Left: Cell lysates from untransfected HEK293T cells; Right: Cell lysates from HEK293T cells transfected with RC204145 using transfection reagent MegaTran 2.0 (Cat# [TT210002]).