

Product datasheet for **RC204143**

SMAD9 (NM_005905) Human Tagged ORF Clone

Product data:

| | |
|---------------------------|--|
| Product Type: | Expression Plasmids |
| Product Name: | SMAD9 (NM_005905) Human Tagged ORF Clone |
| Tag: | Myc-DDK |
| Symbol: | SMAD9 |
| Synonyms: | MADH6; MADH9; PPH2; SMAD8; SMAD8/9; SMAD8A; SMAD8B |
| Mammalian Cell Selection: | Neomycin |
| Vector: | pCMV6-Entry (PS100001) |
| E. coli Selection: | Kanamycin (25 ug/mL) |



[View online »](#)

ORF Nucleotide
Sequence:

>RC204143 ORF sequence
 Red=Cloning site Blue=ORF Green=Tags(s)

TTTTGTAATACGACTCACTATAGGGCGGCCGGAATTCGTCGACTGGATCCGGTACCGAGGAGATCTGCC
 GCCGGATCGCC

ATGCACTCCACCACCCCATCAGCTCCCTTCTCCTTACCAGCCCCGAGTGAAGAGACTGCTAGGCT
 GGAAGCAAGGAGATGAAGAGGAAAAGTGGGCAGAGAAGGCAGTGGACTCTCTAGTGAAGAAGTTAAAGAA
 GAAGAAGGGAGCCATGGACGAGCTGGAGAGGGCTCTCAGCTGCCCGGGCAGCCCAGCAAATGCGTCACG
 ATCCCGCTCCCTGGACGGGGCTGCAGGTGTCCACCACCAAGGGCTGCCCATGTGATTTACTGTG
 GCGTGTGGCGCTGGCCGATCTGCAGTCCACCACGAGCTGAAGCCGCTGGAGTGTGTGAGTCCCATT
 TGGCTCCAAGCAGAAAGAAGTGTGCATTAACCCTTACCACTACCGCCGGTGGAGACTCCAGTACTGCCT
 CCTGTGCTCGTGCCAAGACACAGTGAATATAACCCCACTCAGCTCAGCTCCTGGCCAAGTCCGACGCGCT
 CCCTGCACAGTGAAGCACTCATGCCACACAACGCCACCTATCCTGACTCTTCCAGCAGCTCCGTGCTC
 TGCACTCCCTCCCTCACCCAGCCAGCGTTCTCCAGTCCCGTGCACGCCAGTACCCTCACTCCCCA
 GGAAGTCCTTCTGAGCCAGAGATCCCTATCAACTCAGACTTTCGACCAAGTTGTTACGAGGAGCCCC
 AGCACTGGTGCTCGGTCGCTACTATGAACTGAACAACCGAGTTGGGGAGACATTCCAGGCTTCTCCCG
 AAGTGTGCTCATAGATGGGTTACCCGACCTTCAAATAACAGGAACAGATTCTGTCTGGACTTCTTTCT
 AATGTAACAGAACTCAACGATAGAAAATACCAGGAGACATATAGGAAAGGGTGTGCACTTGTACTACG
 TCGGGGAGAGGTGTATGCCGAGTGCCTGAGTGCAGCAGCATCTTTGTGCAGAGCCGAACTGCAACTA
 TCAACACGGCTCCACCCAGTACCGTCTGCAAGTCCCAGCGGCTGCAGCCTCAAGGCTTCAACAAC
 CAGCTCTTCGCTCAGTCTCGCCAGTCACTTACCACGGCTTGAAGTCGTGTATGAACTGACCAAGA
 TGTGACTATCCGGATGAGTTTGTAAAGGGTGGGGTGTGAGTATCATCGCCAGGATGCACACGAC
 CCCTGCTGGATTGAGATTCATCTTCATGGGCCACTGCAGTGGCTGGACAAAGTTCTGACTCAGATGGGC
 TCTCCACATAACCCATTCTTCACTGTCT

AGCGGACCGACGCGTACGCGCCGCTCGAGCAGAACTCATCTCAGAAGAGGATCTGGCAGCAAATGATATCC
 TGGATTACAAGGATGACGACGATAAGGTTAA

Protein Sequence:

>RC204143 protein sequence
 Red=Cloning site Green=Tags(s)

MHSTTPISSLFSTSPAVKRLLGWKQGDEEEKWAEKAVDSLKLLKLLKKKGAMDELERALSCPGQPSKCVT
 IPRSLDGRLQVSHRKGLPHVIYCRVWRWPDLSHHEKPLECEFPFGSKQKEVCINPYHYRRVETPVL
 PVLVPRHSEYNPQLSLLAKFRSASLHSEPLMPHNATYPDSFQQPPCSALPPSPSHAFSQQSPCTASYPHSP
 GSPSEPESPYQHSDFRPVCEEPQHWCSVAYYELNNRVGETFQASSRSVLIDGFTDPSNNRNRFLGLLS
 NVNRNSTIENTRRHIGKGVHLYYVGEVYAEVSDSSIFVQSRNCNYQHGFHPATVCKIPSGCSLKVFN
 QLFAQLLAQSVHHGFVYVELTKMCTIRMSFVKGWGAEYHRQDVTSTPCWIEIHLHGPLQWLDKVLQMG
 SPHNPISSVS

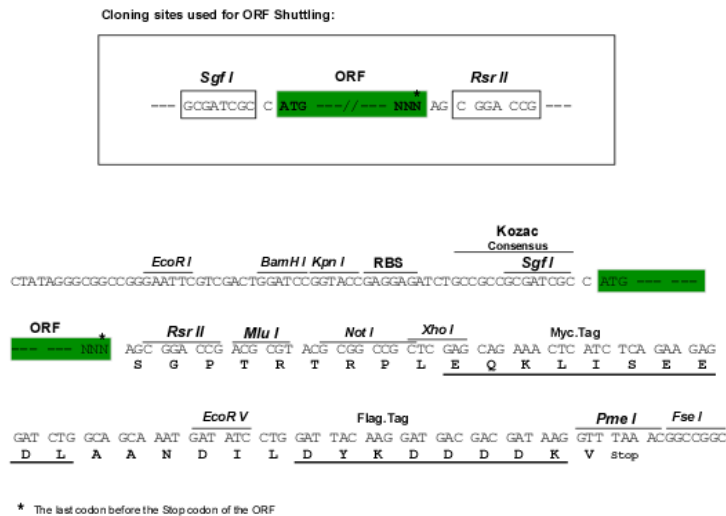
SGPTRTRPLEQKLI SEEDLAANDILDYKDDDDK

Chromatograms:

https://cdn.origene.com/chromatograms/mk6618_c03.zip

Restriction Sites:

Sgfl-RsrII

Cloning Scheme:


ACCN: NM_005905

ORF Size: 1290 bp

OTI Disclaimer: The molecular sequence of this clone aligns with the gene accession number as a point of reference only. However, individual transcript sequences of the same gene can differ through naturally occurring variations (e.g. polymorphisms), each with its own valid existence. This clone is substantially in agreement with the reference, but a complete review of all prevailing variants is recommended prior to use. [More info](#)

OTI Annotation: This clone was engineered to express the complete ORF with an expression tag. Expression varies depending on the nature of the gene.

Components: The ORF clone is ion-exchange column purified and shipped in a 2D barcoded Matrix tube containing 10ug of transfection-ready, dried plasmid DNA (reconstitute with 100 ul of water).

Reconstitution Method:

1. Centrifuge at 5,000xg for 5min.
2. Carefully open the tube and add 100ul of sterile water to dissolve the DNA.
3. Close the tube and incubate for 10 minutes at room temperature.
4. Briefly vortex the tube and then do a quick spin (less than 5000xg) to concentrate the liquid at the bottom.
5. Store the suspended plasmid at -20°C. The DNA is stable for at least one year from date of shipping when stored at -20°C.

RefSeq: [NM_005905.6](#)

RefSeq Size: 5481 bp

RefSeq ORF: 1293 bp

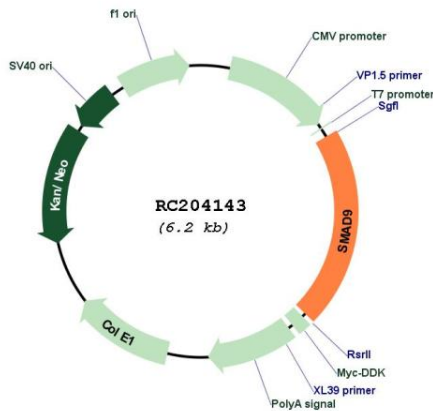
Locus ID: 4093

UniProt ID: [O15198](#)

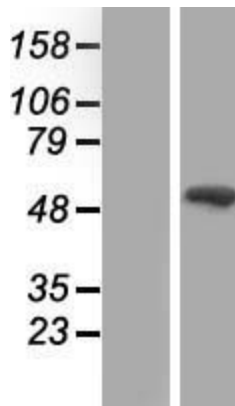
Cytogenetics: 13q13.3

Domains: DWB, DWA, MH1
Protein Families: ES Cell Differentiation/IPS, Transcription Factors
Protein Pathways: TGF-beta signaling pathway
MW: 48.6 kDa
Gene Summary: The protein encoded by this gene is a member of the SMAD family, which transduces signals from TGF-beta family members. The encoded protein is activated by bone morphogenetic proteins and interacts with SMAD4. Two transcript variants encoding different isoforms have been found for this gene.[provided by RefSeq, Jan 2010]

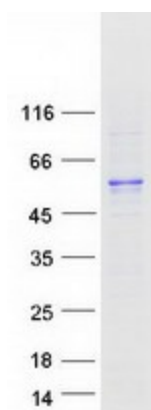
Product images:



Circular map for RC204143



Western blot validation of overexpression lysate (Cat# [LY416992]) using anti-DDK antibody (Cat# [TA50011-100]). Left: Cell lysates from untransfected HEK293T cells; Right: Cell lysates from HEK293T cells transfected with RC204143 using transfection reagent MegaTran 2.0 (Cat# [TT210002]).



Coomassie blue staining of purified SMAD9 protein (Cat# [TP304143]). The protein was produced from HEK293T cells transfected with SMAD9 cDNA clone (Cat# RC204143) using MegaTran 2.0 (Cat# [TT210002]).