

Product datasheet for **RC204140**

Nrf2 (NFE2L2) (NM_006164) Human Tagged ORF Clone

Product data:

Product Type:	Expression Plasmids
Product Name:	Nrf2 (NFE2L2) (NM_006164) Human Tagged ORF Clone
Tag:	Myc-DDK
Symbol:	Nrf2
Synonyms:	HEBP1; IMDDHH; Nrf-2; NRF2
Mammalian Cell Selection:	Neomycin
Vector:	pCMV6-Entry (PS100001)
E. coli Selection:	Kanamycin (25 ug/mL)



[View online »](#)

ORF Nucleotide Sequence:

>RC204140 representing NM_006164
 Red=Cloning site Blue=ORF Green=Tags(s)

TTTTGTAATACGACTCACTATAGGGCGGCCGGGAATTCGTCGACTGGATCCGGTACCGAGGAGATCTGCC
 GCCCGCATCGCC

ATGATGGACTTGGAGCTGCCGCCCGGGACTCCCGTCCCAGCAGGACATGGATTTGATTGACATACTTT
 GGAGGCAAGATATAGATCTTGGAGTAAGTCGAGAAGTATTTGACTTCAGTCAGCGACGAAAAGAGTATGA
 GCTGGAACAAACAGAAAACTTGAAGGAAAGACAAGAACAACCTCCAAAAGGAGCAAGAGAAAAGCCTTT
 TTCGCTCAGTTACAACACTAGATGAAGAGACAGGTGAATTTCTCCAATTCAGCCAGCCAGCACATCCAGT
 CAGAAACCAGTGGATCTGCCAACTACTCCAGGTTGCCACATTCCTCAAATCAGATGCTTTGACTTTGA
 TGACTGCATGCAGCTTTGGCGCAGACATTCCTGTTTGTAGATGACAATGAGGTTTCTTCGGCTACGTTT
 CAGTCACTTGTCTGATATTCCTGGTACATCGAGAGCCAGTCTTCATTGCTACTAATCAGGCTCAGT
 CACCTGAAACTTCTGTTGCTCAGGTAGCCCTGTTGATTTAGACGGTATGCAACAGGACATTGAGCAAGT
 TTGGGAGGAGCTATTATCCATTCCTGAGTTACAGTGTCTTAATATTGAAAATGACAAGCTGGTTGAGACT
 ACCATGGTTCCAAGTCCAGAAGCCAAACTGACAGAAGTTGACAATTATCATTTTTACTCATCTATACCCT
 CAATGAAAAAGAAGTAGGTAAGTGTAGTCCACATTTTCTTAATGCTTTTGGAGATTCTTCAGCAGCAT
 CCTCTCCACAGAAGACCCCAACCAGTTGACAGTGAACCTATAAATTCAGATGCCACAGTCAACACAGAT
 TTTGGTATGAATTTTATCTGCTTTCATAGCTGAGCCAGTATCAGCAACAGCATGCCCTCACCTGCTA
 CTTTAAGCCATTCACTCTCTGAACCTCTAAATGGGCCATTGATGTTTCTGATCTATCACTTTGCAAAGC
 TTTCAACCAAAACCACCTGAAAGCACAGCAGAATTCATGATTTGACTCCGGCATTCTACTAACACA
 AGTCCCAGTGTGGCATCACCAGAACACTCAGTGGAACTTCCAGCTATGGAGACACACTACTTGGCCTCA
 GTGATTTGAAGTGAAGAGCTAGATAGTGCCTGGAAGTGTCAAACAGAATGGTCTCTAAAACACAGT
 ACATTTCTGCGGATATGGTACAACCCTGTCAACATCTCAGGGGCAGAGCACTCAGTGCATGATGCC
 CAATGTGAGAACACACCAGAGAAAGAAATTCCTGTAAGTCTGGTTCATCGAAAAACCCATTACAAAAAG
 ACAAACATTCAAGCCGCTTGGAGGCTCATCTCACAAGAGATGAACCTAGGGCAAAAGCTCTCCATATCCC
 ATTCCCTGTAGAAAAATCATTAACTCCCTGTTGTTGACTTCAACGAAATGATGTCCAAAGAGCAGTTC
 AATGAAGCTCACTTGCATTAATTCGGGATACGTAGGAGGGTAAGAATAAAGTGGCTGCTCAGAATT
 GCAGAAAAAGAAAAGTGGAAAATATAGTAGAAGTACAGCAAGATTTAGATCATTTGAAAGATGAAAAAGA
 AAAATTGCTCAAAGAAAAAGGAGAAAATGACAAAAGCCTTCACTACTGAAAAACAACACTCAGCACCTTA
 TATCTCGAAGTTTTCAGCATGCTACGTGATGAAGATGGAAAACCTTATTCTCCTAGTGAATACTCCCTGC
 AGCAAACAAGAGATGGCAATGTTTTCTTGTTCCTCAAAAGTAAGAAGCCAGATGTTAAGAAAAAC

ACGCGTACGCGGCCGCTCGAGCAGAAACTCATCTCTGAAGAGGATCTGGCAGCAAATGATATCCTGGATT
 ACAAGGATGACGACGATAAGGTTTAA

Protein Sequence:

>RC204140 representing NM_006164
 Red=Cloning site Green=Tags(s)

MMDLELPPPLPSQQDMDLIDILWRQIDILGVSREVFDFSQRRKEYELEKQKLEKERQEQLQKEQEKAF
 FAQLQLDEETGEFLPIQPAQHIQSETSGSANYSQVAHIPKSDALYFDDCMQLLAQTFFVDDNEVSSATF
 QSLVPDIPGHIESPVFIATNQAQSPETSVAQVAPVDLDGMQQDIEQVWEELL SIPELQCLNIENDKLVET
 TMVPSPEAKL TEVDNYHFYSSIPSMEKEVGNCSPHFLNAFEDSFSSILSTEDPNQLTVNSLNSDATVNTD
 FGDEFYSAFIAEPSISNSMPSATLSHLSSELLNGPIDVSDL SLCKAFNQNHPESTAEFNDSDSGISLNT
 SPSVASPEHSVSSSYGDTLLGLSDSEVEELDSAPGSVKQNGPKTPVHSSGDMVQPLSPSQGQSTHVHDA
 QCENTPEKELPVSPGHRKTPFTKDKHSSRLEAHLTRDELRAKALHIPFPVEKIINLPVVDNFEMMSKEQF
 NEAQLALIRDIRRRGKNKVAQAQNCRRKLENIVELEQDLHLKDEKEKLLKEKGENDKSLHLLKKQLSTL
 YLEVFMSLRDEDGKPYSPSEYSLQQTRDGNVFLVPKSKKPDVKKK

TRTRPLEQKLISEEDLAANDILDYKDDDDKV

Chromatograms:

https://cdn.origene.com/chromatograms/mg2819_g05.zip

Restriction Sites: SgfI-MluI

Cloning Scheme:



ACCN: NM_006164

ORF Size: 1815 bp

OTI Disclaimer: Due to the inherent nature of this plasmid, standard methods to replicate additional amounts of DNA in *E. coli* are highly likely to result in mutations and/or rearrangements. Therefore, OriGene does not guarantee the capability to replicate this plasmid DNA. Additional amounts of DNA can be purchased from OriGene with batch-specific, full-sequence verification at a reduced cost. Please contact our customer care team at custsupport@origene.com or by calling 301.340.3188 option 3 for pricing and delivery.

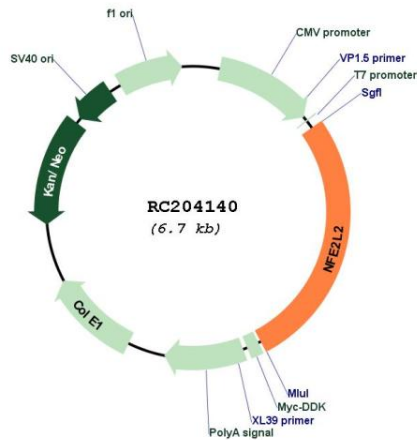
The molecular sequence of this clone aligns with the gene accession number as a point of reference only. However, individual transcript sequences of the same gene can differ through naturally occurring variations (e.g. polymorphisms), each with its own valid existence. This clone is substantially in agreement with the reference, but a complete review of all prevailing variants is recommended prior to use. [More info](#)

OTI Annotation: This clone was engineered to express the complete ORF with an expression tag. Expression varies depending on the nature of the gene.

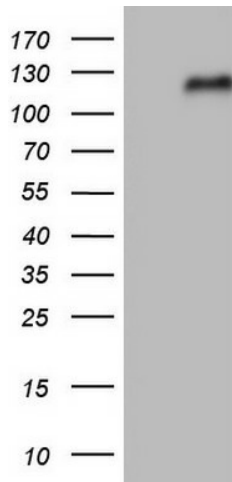
Components: The ORF clone is ion-exchange column purified and shipped in a 2D barcoded Matrix tube containing 10ug of transfection-ready, dried plasmid DNA (reconstitute with 100 ul of water).

Reconstitution Method:	<ol style="list-style-type: none">1. Centrifuge at 5,000xg for 5min.2. Carefully open the tube and add 100ul of sterile water to dissolve the DNA.3. Close the tube and incubate for 10 minutes at room temperature.4. Briefly vortex the tube and then do a quick spin (less than 5000xg) to concentrate the liquid at the bottom.5. Store the suspended plasmid at -20°C. The DNA is stable for at least one year from date of shipping when stored at -20°C.
Note:	Plasmids are not sterile. For experiments where strict sterility is required, filtration with 0.22um filter is required.
RefSeq:	NM_006164.5
RefSeq Size:	2859 bp
RefSeq ORF:	1818 bp
Locus ID:	4780
UniProt ID:	Q16236
Cytogenetics:	2q31.2
Domains:	BRLZ
Protein Families:	Transcription Factors
MW:	67.8 kDa
Gene Summary:	This gene encodes a transcription factor which is a member of a small family of basic leucine zipper (bZIP) proteins. The encoded transcription factor regulates genes which contain antioxidant response elements (ARE) in their promoters; many of these genes encode proteins involved in response to injury and inflammation which includes the production of free radicals. Multiple transcript variants encoding different isoforms have been characterized for this gene. [provided by RefSeq, Sep 2015]

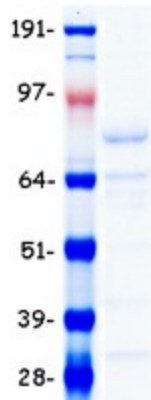
Product images:



Circular map for RC204140



HEK293T cells were transfected with the pCMV6-ENTRY control (Cat# [PS100001], Left lane) or pCMV6-ENTRY NFE2L2 (Cat# RC204140, Right lane) cDNA for 48 hrs and lysed. Equivalent amounts of cell lysates (5 ug per lane) were separated by SDS-PAGE and immunoblotted with anti-NFE2L2(Cat# [TA805014]).



Coomassie blue staining of purified NFE2L2 protein (Cat# [TP304140]). The protein was produced from HEK293T cells transfected with NFE2L2 cDNA clone (Cat# RC204140) using MegaTran 2.0 (Cat# [TT210002]).