

Product datasheet for **RC204135**

EB3 (MAPRE3) (NM_012326) Human Tagged ORF Clone

Product data:

Product Type:	Expression Plasmids
Product Name:	EB3 (MAPRE3) (NM_012326) Human Tagged ORF Clone
Tag:	Myc-DDK
Symbol:	EB3
Synonyms:	EB3; EBF3; EBF3-S; RP3
Mammalian Cell Selection:	Neomycin
Vector:	pCMV6-Entry (PS100001)
E. coli Selection:	Kanamycin (25 ug/mL)
ORF Nucleotide Sequence:	>RC204135 ORF sequence Red=Cloning site Blue=ORF Green=Tags(s)

TTTTGTAATACGACTCACTATAGGGCGCCGGGAATTCGTCGACTGGATCCGGTACCGAGGAGATCTGCC
GCC**CGGATCGCC**

ATGGCCGTCAATGTGTACTCCACATCTGTGACCAGTGAAAATCTGAGTCGCCATGATATGCTTGCATGGG
TCAACGACTCCCTGCACCTCACTATACCAAGATAGAACAGCTTTGTTTCAGGGGCAGCCTACTGCCAGTT
CATGGACATGCTTCCCGGCTGTGTGCACTTGAGGAAAGTGAAGTTCCAGGCCAACTAGAGCATGAA
TACATCCACAACCTCAAGGTGCTGCAAGCAGCTTCAAGAAGATGGGTGTTGACAAAATCATTCTGTAG
AGAAATTAGTGAAGGAAAATCCAAGATAATTTGAGTTTATTCAGTGGTTAAGAAATCTTTGACGC
AACTATGATGGAAAGGATTACAACCTCTGCTGGCGCGGACGGCCAGGACGTAGCGCCACCTCCTAAC
CCAGGTGATCAGATCTTCAACAAATCCAAGAACTCATTGGCACAGCAGTTCCACAGAGGACGTCCCCCA
CAGGCCAAAAACATGCAGACCTCTGGCCGGCTGAGCAATGTGGCCCCCCTGCATTCTCCGGAAGAA
TCCTCCATCAGCCGAAATGGCGGCCATGAGACTGATGCCAAATCTTGAACCAACCAACAGCTGGTG
GACTTGAAGCTGACAGTGGATGGGCTGGAGAAGAACGTGACTTCTACTTCAGCAAACCTTCGTGACATCG
AGCTCATCTGCCAGGAGCATGAAAGTAAAACAGCCCTGTTATCTCAGGCATCATTGGCATCCTCTATGC
CACAGAGGAAGGATTCGCACCCCTGAGGACGATGAGATTGAAGAGCATCAACAAGAAGACCAGGACGAG
TAC

ACGCGTACGCGGCCGCTCGAGCAGAACTCATCTCAGAAGAGGATCTGGCAGCAAATGATATCCTGGATT
ACAAGGATGACGACGATAAGGTTTAA



[View online »](#)

Protein Sequence: >RC204135 protein sequence
Red=Cloning site Green=Tags(s)

MAVNVYSTSVTSENLSRHDMLAWVNDLSHLNYTKIEQLCSGAAYCQFMDMLFPGCVHLRKVKFQAKLEHE
 YIHNFKVLQAAFKKMGVDKIIPVEKLVKGGKFDNFEFIQWFKKFFDANYDGKDYNPLLARQGQDVAPPPN
 PGDQIFNKSKKLI GTAVPQRTSPTGPKNMQTSGRLSNVAPPICILRKNPPSARNGGHETDAQILELNQQLV
 DLKLTVDGLEKERDFYF SKLRDIELICQEHESENSPVISGIIIGILYATEEGFAPPEDDEIEEHQQEDQDE
 Y

TRTRPLEQKLISEEDLAANDILDYKDDDDKV

Chromatograms: https://cdn.origene.com/chromatograms/mk6431_a11.zip

Restriction Sites: SgfI-MluI

Cloning Scheme:



ACCN: NM_012326

ORF Size: 843 bp

OTI Disclaimer: The molecular sequence of this clone aligns with the gene accession number as a point of reference only. However, individual transcript sequences of the same gene can differ through naturally occurring variations (e.g. polymorphisms), each with its own valid existence. This clone is substantially in agreement with the reference, but a complete review of all prevailing variants is recommended prior to use. [More info](#)

OTI Annotation: This clone was engineered to express the complete ORF with an expression tag. Expression varies depending on the nature of the gene.

Components: The ORF clone is ion-exchange column purified and shipped in a 2D barcoded Matrix tube containing 10ug of transfection-ready, dried plasmid DNA (reconstitute with 100 ul of water).

Reconstitution Method:

1. Centrifuge at 5,000xg for 5min.
2. Carefully open the tube and add 100ul of sterile water to dissolve the DNA.
3. Close the tube and incubate for 10 minutes at room temperature.
4. Briefly vortex the tube and then do a quick spin (less than 5000xg) to concentrate the liquid at the bottom.
5. Store the suspended plasmid at -20°C. The DNA is stable for at least one year from date of shipping when stored at -20°C.

RefSeq: [NM_012326.2](#), [NP_036458.2](#)

RefSeq Size: 1880 bp

RefSeq ORF: 846 bp

Locus ID: 22924

UniProt ID: [Q9UPY8](#)

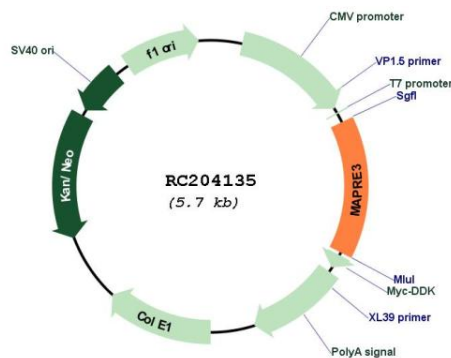
Cytogenetics: 2p23.3

Domains: CH, EB1

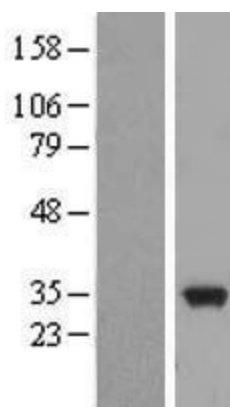
MW: 32 kDa

Gene Summary: The protein encoded by this gene is a member of the RP/EB family of genes. The protein localizes to the cytoplasmic microtubule network and binds APCL, a homolog of the adenomatous polyposis coli tumor suppressor gene. [provided by RefSeq, Jul 2008]

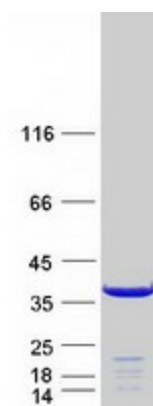
Product images:



Circular map for RC204135



Western blot validation of overexpression lysate (Cat# [LY415770]) using anti-DDK antibody (Cat# [TA50011-100]). Left: Cell lysates from untransfected HEK293T cells; Right: Cell lysates from HEK293T cells transfected with RC204135 using transfection reagent MegaTran 2.0 (Cat# [TT210002]).



Coomassie blue staining of purified MAPRE3 protein (Cat# [TP304135]). The protein was produced from HEK293T cells transfected with MAPRE3 cDNA clone (Cat# RC204135) using MegaTran 2.0 (Cat# [TT210002]).