

Product datasheet for **RC204133**

STK38 (NM_007271) Human Tagged ORF Clone

Product data:

Product Type:	Expression Plasmids
Product Name:	STK38 (NM_007271) Human Tagged ORF Clone
Tag:	Myc-DDK
Symbol:	STK38
Synonyms:	NDR; NDR1
Mammalian Cell Selection:	Neomycin
Vector:	pCMV6-Entry (PS100001)
E. coli Selection:	Kanamycin (25 ug/mL)



[View online »](#)

ORF Nucleotide Sequence:

>RC204133 ORF sequence
 Red=Cloning site Blue=ORF Green=Tags(s)

TTTTGTAATACGACTCACTATAGGGCGGCCGGAATTCGTCGACTGGATCCGGTACCGAGGAGATCTGCC
 GCC**CGGATCGCC**

ATGGCAATGACAGGCTCAACACCTTGCTCATCCATGAGTAACCACACAAAGGAAAGGGTGACAATGACCA
 AAGTGACACTGGAGAATTTTATAGCAACCTTATCGCTCAACATGAAGAACGAGAAATGAGACAAAAGAA
 GTTAGAAAAGGTGATGGAAGAAGAAGGCCATAAAGATGAGGAGAAACGACTCCGGAGATCAGCACATGCT
 CGGAAGGAAAACAGAGTTTCTTCGTTTGAAGAGAACAAGACTTGGATTGGAAGATTTTGTGCTTAAAG
 TAATAGGCAGAGGAGCATTGGTGAGGTACGGCTTGTTCAGAAGAAAGATACGGGACATGTGTATGCAAT
 GAAAATACTCCGTAAAGCAGATATGCTTAAAAAGAGCAGGTTGGCCACATTCGTGCGGAGCGTGACATT
 CTAGTGGAGGCAGACAGTTTGTGGTGTGAAAATGTTCTATAGTTTTCCAGGATAAGCTAAACCTCTACC
 TAATCATGGAGTTCCTGCCTGGAGGGGACATGATGACCTTGTGTGAAAAAGACACTCTGACAGAAGA
 GGAGACTCAGTTTTATATAGCAGAAACAGTATTAGCCATAGACTCTATCCACCACTTGGATTTCATCCAC
 AGAGACATCAAACAGACAACCTTCTTTGGACAGCAAGGGCCATGTGAAACTTTCTGACTTTGGTCTTT
 GCACAGGACTGAAAAAGCACATAGGACAGAATTTTATAGGAATCTGAACCACAGCCTCCCCAGTGATT
 CACTTTCCAGAACATGAATTCAAAAGGAAAGCAGAACTGGAAAAAGAAATAGACGTCAGCTAGCCTTC
 TCCACAGTAGGCACTCCTGACTACATTGCTCCTGAGGTGTTCATGCAGACCGGGTACAACAAGCTCTGTG
 ATGGTGGTTCGCTTGGGGTATCATGTATGAGATGCTCATCGGCTACCCACCTTTCTGTTCTGAGACCCC
 TCAAGAGACATATAAGAAGGTGATGAACTGGAAGAACTTTGACTTTTCTCCAGAAGTCCCATCTCT
 GAGAAAGCCAAGGATCTAATTTTGAAGTCTGCTGTGAATGGGAACATAGAATTGGAGCTCCTGGAGTTG
 AGGAAATAAAAAGTAACCTTTTTTTGAAGCGTTGACTGGGAACATATCAGAGAGAGACTGCTGCAAT
 ATCTATTGAAATCAAAGCATTGATGATACCTCAAACCTTCGATGAGTTTTCCAGAATCTGATATTCTTAAG
 CCAACAGTGGCCACAAGTAATCATCCTGAGACTGACTACAAGAACAAGACTGGGTCTTCAATTACA
 CGTACAAGCGCTTTGAGGGCCTGACTGCAAGGGGGCAATACCTTCTACATGAAAGCAGCAAAA

AG**CGGACCG**ACGCGTACGCGGCCGCTCGAGCAGAACTCATCTCAGAAGAGGATCTGGCAGCAAATGATATCC
 TGGATTACAAGGATGACGACGATAAGGTTAA

Protein Sequence:

>RC204133 protein sequence
 Red=Cloning site Green=Tags(s)

MAMTGSTPCSSMSNHTKERVMTKVTLENFYSNLIAQHEEREMRQKLEKVMEEGLKDEEKRLRRSAHA
 RKETEFRLRKRTRLGLEDFESLKVIGRAFGEVRLVQKKTGHVYAMKILRKADMLEKEQVGHIRAERDI
 LVEADSLWVVKMFYSFQDKLNLYLIMEFLPGDMMTLLMKKDTL TEEETQFYIAETVLAIDSIHQLGFIH
 RDIKPDNLLLSKGHVKLSDFGLCTGLKKAHRTEFYRNLNHS LPSDFTFQNMNSKRKAETWKRNRRLAF
 STVGTDPDYIAPEVFMQTGYNKLCDWWSLGVIMYEMLIGYPPFCSETPQETYKKVMNWKETLTFPPEVPIS
 EKAKDLILRFCEWEHRIGAPGVEEIKSNSFFEGVDWEHIRERPAAISIEIKSIDDSNFDEFPESDILK
 PTVATSNHPETDYKNKDWVFINYTYKRFELTARGAIPSYMKAAK

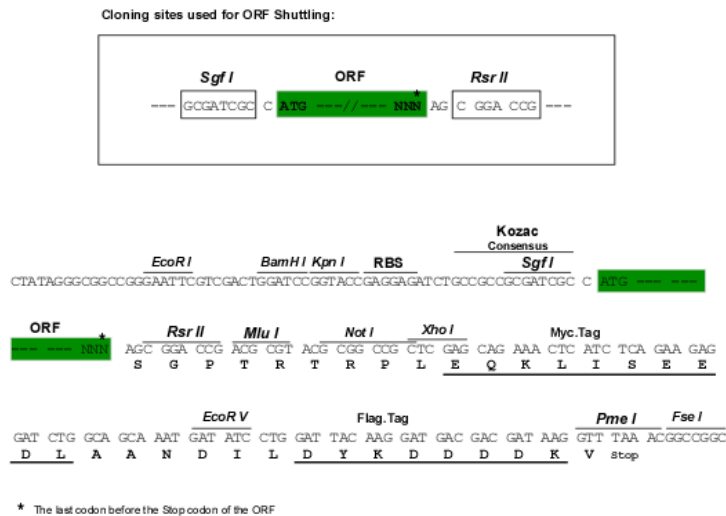
SGPTRTRPLEQKLISEEDLAANDILDYKDDDDKV

Chromatograms:

https://cdn.origene.com/chromatograms/mk6190_c12.zip

Restriction Sites:

Sgfl-RsrII

Cloning Scheme:


ACCN: NM_007271

ORF Size: 1395 bp

OTI Disclaimer: The molecular sequence of this clone aligns with the gene accession number as a point of reference only. However, individual transcript sequences of the same gene can differ through naturally occurring variations (e.g. polymorphisms), each with its own valid existence. This clone is substantially in agreement with the reference, but a complete review of all prevailing variants is recommended prior to use. [More info](#)

OTI Annotation: This clone was engineered to express the complete ORF with an expression tag. Expression varies depending on the nature of the gene.

Components: The ORF clone is ion-exchange column purified and shipped in a 2D barcoded Matrix tube containing 10ug of transfection-ready, dried plasmid DNA (reconstitute with 100 ul of water).

- Reconstitution Method:**
1. Centrifuge at 5,000xg for 5min.
 2. Carefully open the tube and add 100ul of sterile water to dissolve the DNA.
 3. Close the tube and incubate for 10 minutes at room temperature.
 4. Briefly vortex the tube and then do a quick spin (less than 5000xg) to concentrate the liquid at the bottom.
 5. Store the suspended plasmid at -20°C. The DNA is stable for at least one year from date of shipping when stored at -20°C.

Note: Plasmids are not sterile. For experiments where strict sterility is required, filtration with 0.22um filter is required.

RefSeq: [NM_007271.4](#)

RefSeq Size: 3593 bp

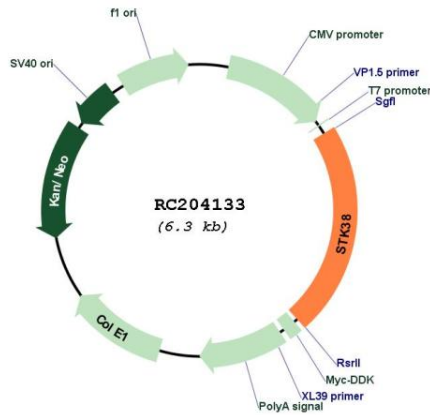
RefSeq ORF: 1398 bp

Locus ID: 11329

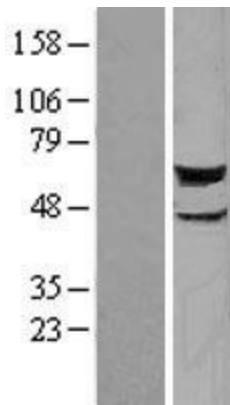
UniProt ID: [Q15208](#)
Cytogenetics: 6p21.31
Domains: pkinase, TyrKc, S_TKc
Protein Families: Druggable Genome, Protein Kinase
MW: 54.2 kDa

Gene Summary: This gene encodes a member of the AGC serine/threonine kinase family of proteins. The kinase activity of this protein is regulated by autophosphorylation and phosphorylation by other upstream kinases. This protein has been shown to function in the cell cycle and apoptosis. This protein has also been found to regulate the protein stability and transcriptional activity of the MYC oncogene. Alternative splicing results in multiple transcript variants. [provided by RefSeq, Feb 2015]

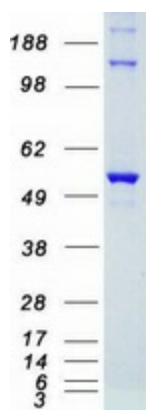
Product images:



Circular map for RC204133



Western blot validation of overexpression lysate (Cat# [LY402123]) using anti-DDK antibody (Cat# [TA50011-100]). Left: Cell lysates from untransfected HEK293T cells; Right: Cell lysates from HEK293T cells transfected with RC204133 using transfection reagent MegaTran 2.0 (Cat# [TT210002]).



Coomassie blue staining of purified STK38 protein (Cat# [TP304133]). The protein was produced from HEK293T cells transfected with STK38 cDNA clone (Cat# RC204133) using MegaTran 2.0 (Cat# [TT210002]).