

Product datasheet for RC204132

PGLS (NM_012088) Human Tagged ORF Clone

Product data:

Product Type:	Expression Plasmids
Product Name:	PGLS (NM_012088) Human Tagged ORF Clone
Tag:	Myc-DDK
Symbol:	PGLS
Synonyms:	6PGL; HEL-S-304
Mammalian Cell Selection:	Neomycin
Vector:	pCMV6-Entry (PS100001)
E. coli Selection:	Kanamycin (25 ug/mL)
ORF Nucleotide Sequence:	>RC204132 ORF sequence Red=Cloning site Blue=ORF Green=Tags(s)

TTTTGTAATACGACTCACTATAGGGCGGCCGGAATTCGTCGACTGGATCCGGTACCGAGGAGATCTGCC
GCC**CGATCGCC**

ATGGCCGCGCCGGCCCGGGCCTCATCTCGGTGTTCTCGAGTCCAGGAGCTGGGTGCGGCCTAGCGC
AGCTGGTGGCCAGCGCGCAGCATGCTGCCTGGCAGGGGCCGCGCCGTTTCGCGCTCGGCTTGTCCGG
CGGGAGCCTCGTCTCGATGCTAGCCCGGAGCTACCCGCCCGTCGCCCTGCCGGCCAGCTAGCTTA
GCGCGCTGGACGCTGGGCTTCTGCGACGAGCGCCTCGTCCCTTCGATCACGCCAGAGCACGTACGGCC
TCTACCGGACGCATCTTCTCCAGACTGCCGATCCCAGAAAGCCAGGTGATCACCATTAAACCCGAGCT
GCCTGTGGAGGAGCGGCTGAGGACTACGCCAAGAAGCTGAGACAGGCATTCCAAGGGGACTCCATCCCG
GTTTTCGACCTGCTGATCCTGGGGTGGGCCCGATGGTCAACCTGCTCACTTCTCCAGACCACCCCC
TCCTACAGGAGCGGGAGAAGATTGTGGCTCCCATCAGTACTCCCGAAGCCACCGCCACAGCGTGTGAC
CCTCACGCTACCTGTCTGAATGCAGCACGAACTGTCACTTTGTGGCAACTGGAGAAGGCAAGGCAGCT
GTTCTGAAGCGCATTTTGGAGGACCAGGAGGAAAACCCGCTGCCCGCCGCTGGTCCAGCCCCACACCG
GGAAACTGTGCTGTTCTTGGACGAGGCGGCCGCCCTCTGACCGTGCCTTCGAGAAGCATTCCAC
TTTG

ACGCGTACGCGGCCGCTCGAGCAGAACTCATCTCAGAAGAGGATCTGGCAGCAAATGATATCCTGGATT
ACAAGGATGACGACGATAAGGTTTAA



[View online »](#)

Reconstitution Method:

1. Centrifuge at 5,000xg for 5min.
2. Carefully open the tube and add 100ul of sterile water to dissolve the DNA.
3. Close the tube and incubate for 10 minutes at room temperature.
4. Briefly vortex the tube and then do a quick spin (less than 5000xg) to concentrate the liquid at the bottom.
5. Store the suspended plasmid at -20°C. The DNA is stable for at least one year from date of shipping when stored at -20°C.

RefSeq: [NM_012088.3](#)

RefSeq Size: 1043 bp

RefSeq ORF: 777 bp

Locus ID: 25796

UniProt ID: [O95336](#)

Cytogenetics: 19p13.11

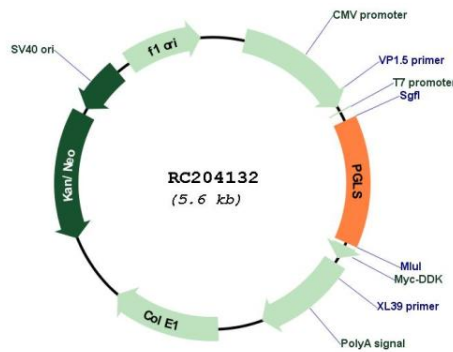
Domains: Glucosamine_iso

Protein Pathways: Metabolic pathways, Pentose phosphate pathway

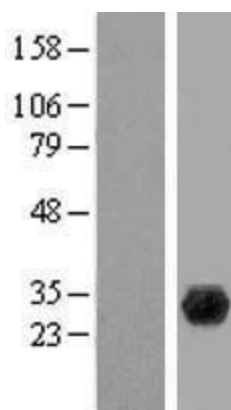
MW: 27.5 kDa

Gene Summary: Hydrolysis of 6-phosphogluconolactone to 6-phosphogluconate.[UniProtKB/Swiss-Prot Function]

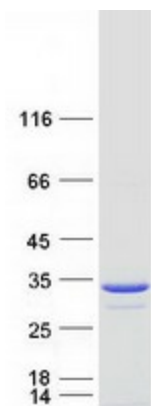
Product images:



Circular map for RC204132



Western blot validation of overexpression lysate (Cat# [LY415991]) using anti-DDK antibody (Cat# [TA50011-100]). Left: Cell lysates from untransfected HEK293T cells; Right: Cell lysates from HEK293T cells transfected with RC204132 using transfection reagent MegaTran 2.0 (Cat# [TT210002]).



Coomassie blue staining of purified PGLS protein (Cat# [TP304132]). The protein was produced from HEK293T cells transfected with PGLS cDNA clone (Cat# RC204132) using MegaTran 2.0 (Cat# [TT210002]).