

Product datasheet for RC204126L1

Synaptogyrin 3 (SYNGR3) (NM_004209) Human Tagged Lenti ORF Clone

Product data:

| | |
|---------------------------|--|
| Product Type: | Expression Plasmids |
| Product Name: | Synaptogyrin 3 (SYNGR3) (NM_004209) Human Tagged Lenti ORF Clone |
| Tag: | Myc-DDK |
| Symbol: | Synaptogyrin 3 |
| Mammalian Cell Selection: | None |
| Vector: | pLenti-C-Myc-DDK (PS100064) |
| E. coli Selection: | Chloramphenicol (34 ug/mL) |
| ORF Nucleotide Sequence: | The ORF insert of this clone is exactly the same as(RC204126). |
| Restriction Sites: | SgfI-MluI |
| Cloning Scheme: | |

Cloning sites used for ORF Shuttling:



* The last codon before the Stop codon of the ORF.

ACCN: NM_004209

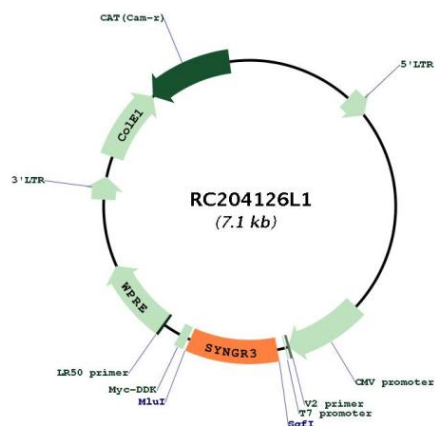
ORF Size: 687 bp



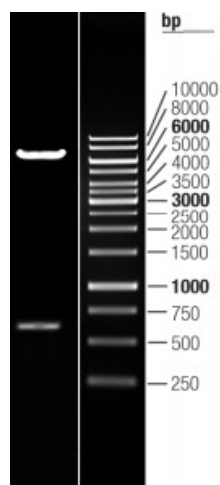
[View online »](#)

| | |
|-------------------------------|---|
| OTI Disclaimer: | The molecular sequence of this clone aligns with the gene accession number as a point of reference only. However, individual transcript sequences of the same gene can differ through naturally occurring variations (e.g. polymorphisms), each with its own valid existence. This clone is substantially in agreement with the reference, but a complete review of all prevailing variants is recommended prior to use. More info |
| OTI Annotation: | This clone was engineered to express the complete ORF with an expression tag. Expression varies depending on the nature of the gene. |
| Components: | The ORF clone is ion-exchange column purified and shipped in a 2D barcoded Matrix tube containing 10ug of transfection-ready, dried plasmid DNA (reconstitute with 100 ul of water). |
| Reconstitution Method: | <ol style="list-style-type: none"> 1. Centrifuge at 5,000xg for 5min. 2. Carefully open the tube and add 100ul of sterile water to dissolve the DNA. 3. Close the tube and incubate for 10 minutes at room temperature. 4. Briefly vortex the tube and then do a quick spin (less than 5000xg) to concentrate the liquid at the bottom. 5. Store the suspended plasmid at -20°C. The DNA is stable for at least one year from date of shipping when stored at -20°C. |
| RefSeq: | NM_004209.4 |
| RefSeq Size: | 2076 bp |
| RefSeq ORF: | 690 bp |
| Locus ID: | 9143 |
| UniProt ID: | O43761 |
| Cytogenetics: | 16p13.3 |
| Domains: | Synaptogyrin |
| Protein Families: | Transmembrane |
| MW: | 24.6 kDa |
| Gene Summary: | This gene encodes an integral membrane protein. The exact function of this protein is unclear, but studies of a similar murine protein suggest that it is a synaptic vesicle protein that also interacts with the dopamine transporter. The gene product belongs to the synaptogyrin gene family. [provided by RefSeq, Dec 2010] |

Product images:



Circular map for RC204126L1



Double digestion of RC204126L1 using SgfI and MluI