

## Product datasheet for **RC204121**

### **CNOT2 (NM\_014515) Human Tagged ORF Clone**

#### **Product data:**

Product Type:	Expression Plasmids
Product Name:	CNOT2 (NM_014515) Human Tagged ORF Clone
Tag:	Myc-DDK
Symbol:	CNOT2
Synonyms:	CDC36; HSPC131; IDNADFS; NOT2; NOT2H
Mammalian Cell Selection:	Neomycin
Vector:	pCMV6-Entry (PS100001)
E. coli Selection:	Kanamycin (25 ug/mL)



[View online »](#)

**ORF Nucleotide Sequence:**

>RC204121 ORF sequence  
 Red=Cloning site Blue=ORF Green=Tags(s)

TTTTGTAATACGACTCACTATAGGGCGGCCGGAATTCGTCGACTGGATCCGGTACCGAGGAGATCTGCC  
 GCC**CGGATCGCC**

ATGGTGAGGACTGATGGACATACATTATCTGAGAAAAGAACTACCAGGTGACAAACAGCATGTTTGGTG  
 CTTCAAGAAAGAAGTTTGTAGAGGGGTCGACAGTACTACCATGACGAAAACATGACTACAGCCAGTC  
 TTCTATGTTTCCACATCGGTGAGAAAAGATATGCTGGCATCACCATCTACATCAGGTGAGTCTGCTCAG  
 TTTGGGGCAAGTTTATACGGGCAACAAAGTGCCTAGGCCTTCCAATGAGGGGGATGAGCAACAATACCC  
 CTCAGTTAAATCGCAGCTTATCACAAGGCACTCAGTTACCAGCCACGTACGCCAACACAGGGGTACC  
 AACATGTCACCTCACACGCCTCCATCTCCAAGCAGGGGTATTTGCCTATGAATCTAGGAATATGATG  
 AACCACTCCCAGGTTGGTCAGGGCATTGGAATTCCTAGCAGGACAAATAGCATGAGCAGTTCAGGGTTAG  
 GTAGCCCCAACAGAAGCTCGCCAAGCATAATATGTATGCCAAAGCAGCAGCCTTCTCGACAGCCTTTTAC  
 TGTGAACAGTATGCTGGATTTGGAATGAACAGGAATCAGGCATTTGGAATGAATAACTCCTTATCAAGT  
 AACATTTTAAATGGAACAGACGGAAGTGAAATGTGACAGGATTGGACCTTTCAGATTTCCAGCATTAG  
 CAGACCGAAACAGGAGGGAAGGAGTGGTAACCCAACCTCATTAAATAAACCCCTTGGCTGGAAGAGCTCC  
 TTATGTTGGAATGGTAACAAAACAGCAAAATGAACAATCCAGGACTTCTCAATACACAATGAAGATTTT  
 CCAGCATTACCAGGCTCCAGCTATAAAGATCCAACATCAAGTAATGATGACAGTAAATCTAATTTGAATA  
 CATCTGGCAAGACAACCTCAAGTACAGATGGACCCAAATCCCTGGAGATAAAAGTTCAACAACACAAAA  
 TAATAACCAGCAGAAAAAAGGGATCCAGGTGTACCTGATGGTCGGGTTACTAACATTCCTCAAGGGATG  
 GTGACGGACCAATTTGGAATGATTGGCCTGTTAACATTTATCAGGGCAGCAGAGACAGCCAGGAATGG  
 TACATCTTGCAATTAGGAAGTGACTTAACAACATTAGGCCTCAATCTGAACCTCCTGAAAATCTCTACCC  
 CAAATTTGCGTACCCCTGGGCATCTTACCTTGTGACCTCAAGACATAGACTTCCATGTTCCATCTGAG  
 TACTTAACGAACATTCACATTAGGGATAAGCTGGCTGCAATAAACTTGGCCGATATGGTGAAGACCTTC  
 TCTTCTATCTCTATTACATGAATGGAGGAGACGTATTACAACCTTTAGCTGCAGTGGAGCTTTTTAACCG  
 TGATTGGAGATACCACAAAGAAGACGAGTATGGATTACCAGGGCACCAGGCATGGAGCCAACAATGAAA  
 ACCAATACCTATGAGAGGGGAACATATTACTTCTTTGACTGTCTTAAGTGGAGGAAAGTAGCTAAGGAGT  
 TCCATCTGGAATATGACAAATTAGAAGAACGGCCTCACCTGCCATCCACCTTCAACTACAACCTGCTCA  
 GCAAGCCTTCT

**ACGCGT**ACGCGGCCGCTCGAGCAGAAACTCATCTCAGAAGAGGATCTGGCAGCAAATGATATCCTGGATT  
 ACAAGGATGACGACGATAAGGTTTAA

**Protein Sequence:**

>RC204121 protein sequence  
 Red=Cloning site Green=Tags(s)

MVRTDGHTLSEKRYQVTNSMFGASRKKFVEGVDSYHDENMYYSQSSMFPHRSEKMDLASPSTSGQLSQ  
 FGASLYGQQSALGLPMRGMSNNTPQLNRSLSQGTQLPSHVTPPTGVPTMSLHTPPSPSRGILPMNPRNMM  
 NHSQVGGIGIPSRNMSSSSGLGSPNRSSPSIICMPKQQPSRQPFVNSMSGFGMNRNQAFGMNNSLSS  
 NIFNGTDGSENVTLGLDLDLSDFPALADNRNREGSGNPTPLINPLAGRAPYVGMVTKPANEQSQDFSIHNEDF  
 PALPGSSYKDPTSSNDDSKSNLNTSGKTTSSTDGPKFPGDKSSTQNNNQKKGIVLPDGRVTNIPQGM  
 VTDQFGMIGLLTFIRAAETDPGMVHLALGSDLTTLGLNLNSPENLYPKFASPWASSPCRQDIDFHVPSE  
 YLTNIHIRDKLAAIKLGRYGEDLLFYLYMNGGDVLLA AVELFNRDWRVYHKEERWITRAPGMEPTMK  
 TNYERGTYYFDCLNWRKVAKEFHLEYDKLEERPHLPSTFNYPNAQQAF

**TR**TRPLEQKLISEEDLAANDILDYKDDDDKV

**Chromatograms:**

[https://cdn.origene.com/chromatograms/mk6432\\_c12.zip](https://cdn.origene.com/chromatograms/mk6432_c12.zip)

**Restriction Sites:**

SgfI-MluI

**Cloning Scheme:**

**ACCN:** NM\_014515

**ORF Size:** 1621 bp

**OTI Disclaimer:** Due to the inherent nature of this plasmid, standard methods to replicate additional amounts of DNA in E. coli are highly likely to result in mutations and/or rearrangements. Therefore, OriGene does not guarantee the capability to replicate this plasmid DNA. Additional amounts of DNA can be purchased from OriGene with batch-specific, full-sequence verification at a reduced cost. Please contact our customer care team at [custsupport@origene.com](mailto:custsupport@origene.com) or by calling 301.340.3188 option 3 for pricing and delivery.

The molecular sequence of this clone aligns with the gene accession number as a point of reference only. However, individual transcript sequences of the same gene can differ through naturally occurring variations (e.g. polymorphisms), each with its own valid existence. This clone is substantially in agreement with the reference, but a complete review of all prevailing variants is recommended prior to use. [More info](#)

**OTI Annotation:** This clone was engineered to express the complete ORF with an expression tag. Expression varies depending on the nature of the gene.

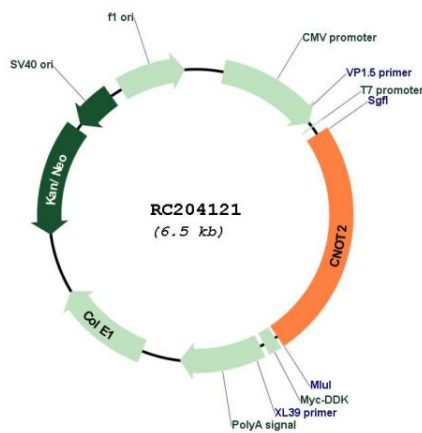
**Components:** The ORF clone is ion-exchange column purified and shipped in a 2D barcoded Matrix tube containing 10ug of transfection-ready, dried plasmid DNA (reconstitute with 100 ul of water).

**Reconstitution Method:**

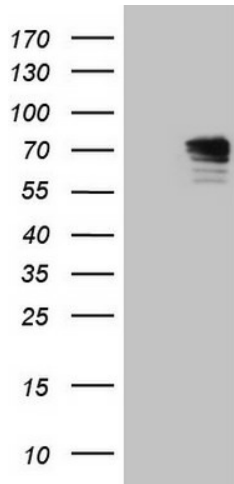
1. Centrifuge at 5,000xg for 5min.
2. Carefully open the tube and add 100ul of sterile water to dissolve the DNA.
3. Close the tube and incubate for 10 minutes at room temperature.
4. Briefly vortex the tube and then do a quick spin (less than 5000xg) to concentrate the liquid at the bottom.
5. Store the suspended plasmid at -20°C. The DNA is stable for at least one year from date of shipping when stored at -20°C.

**RefSeq:** [NM\\_014515.7](#)

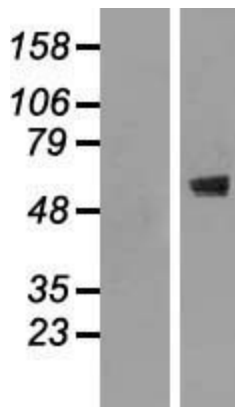
RefSeq Size:	3293 bp
RefSeq ORF:	1623 bp
Locus ID:	4848
UniProt ID:	<a href="#">Q9NZN8</a>
Cytogenetics:	12q15
Domains:	NOT
Protein Families:	Transcription Factors
Protein Pathways:	RNA degradation
MW:	59.7 kDa
Gene Summary:	This gene encodes a subunit of the multi-component CCR4-NOT complex. The CCR4-NOT complex regulates mRNA synthesis and degradation and is also thought to be involved in mRNA splicing, transport and localization. The encoded protein interacts with histone deacetylases and functions as a repressor of polymerase II transcription. Alternatively spliced transcript variants have been observed for this gene. [provided by RefSeq, Dec 2010]

**Product images:**


Circular map for RC204121



HEK293T cells were transfected with the pCMV6-ENTRY control (Cat# [PS100001], Left lane) or pCMV6-ENTRY CNOT2 (Cat# RC204121, Right lane) cDNA for 48 hrs and lysed. Equivalent amounts of cell lysates (5 ug per lane) were separated by SDS-PAGE and immunoblotted with anti-CNOT2 (Cat# [TA808626])(1:2000). Positive lysates [LY415217] (100ug) and [LC415217] (20ug) can be purchased separately from OriGene.



Western blot validation of overexpression lysate (Cat# [LY415217]) using anti-DDK antibody (Cat# [TA50011-100]). Left: Cell lysates from untransfected HEK293T cells; Right: Cell lysates from HEK293T cells transfected with RC204121 using transfection reagent MegaTran 2.0 (Cat# [TT210002]).