

## Product datasheet for **RC204119**

### PTCD3 (NM\_017952) Human Tagged ORF Clone

#### Product data:

Product Type:	Expression Plasmids
Product Name:	PTCD3 (NM_017952) Human Tagged ORF Clone
Tag:	Myc-DDK
Symbol:	PTCD3
Synonyms:	MRP-S39
Mammalian Cell Selection:	Neomycin
Vector:	pCMV6-Entry (PS100001)
E. coli Selection:	Kanamycin (25 ug/mL)



[View online »](#)

ORF Nucleotide  
Sequence:

>RC204119 representing NM\_017952  
 Red=Cloning site Blue=ORF Green=Tags(s)

TTTTGTAATACGACTCACTATAGGGCGGCCGGGAATTCGTCGACTGGATCCGGTACCGAGGAGATCTGCC  
 GCC**CGGATCGCC**

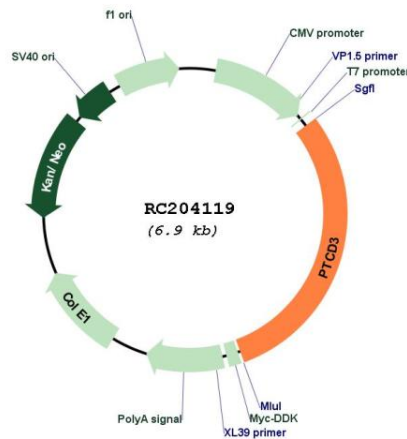
ATGGCGGTTGATCTGCTGTTTCGCTGGCTGGCCCTCCGCAGCAGGCTTGGCCAGCCGCTGACGGGTGCGC  
 GGGCGGGTTTGTGTGAACAGGCACGCAGCTGCAGATTTTATTCTGGTAGTGCAACCCTCTCAAAGGTTGA  
 AGGAACTGATGTAACAGGGATTGAAGAAGTAGTAATTCAAAAAGAAAACCTGGGATAAAGTAGCCGTT  
 CTTCAGGCACTTGCATCCACAGTAAACAGGGATACCACAGCTGTGCCTTATGTGTTTCAAGATGATCCTT  
 ACCTTATGCCAGCATCATCTTTGGAATCTCGTTCAATTTTACTGGCAAAGAAATCCGGGGAGAATGTGGC  
 CAAGTTTATTATTAATTCATACCCCAAATATTTTCAGAAGGACATAGCTGAACCTCATATACCGTGTTTA  
 ATGCCTGAGTACTTTGAACCTCAGATCAAAGACATAAGTGAAGCCGCCCTGAAGGAACGAATTGAGCTCA  
 GAAAAGTCAAAGCCTCTGTGGACATGTTTGATCAGCTTTTGAAGCAGGAACCACTGTGTCTCTTGAAC  
 AACAAATAGTCTCTTGGATTTATTGTGTTACTATGGTGACCAGGAGCCCTCAACTGATTACCATTTTCAA  
 CAAACTGGACAGTCAGAAGCATTGGAAGAGGAAAATGATGAGACATCTAGGAGGAAAAGCTGGTCATCAGT  
 TTGGAGTTACATGGCGAGCAAAAAACAACGCTGAGAGAATCTTTTCTCTAATGCCAGAGAAAAATGAACA  
 TTCTATTGCACAATGATCCGAGGAATGGTGAAGCACCGAGCTTATGAGCAGGCATTAAACTTGTACACT  
 GAGTTACTAAACAACAGACTCCATGCTGATGTATACACATTTAATGCATTGATTGAAGCAACAGTATGTG  
 CGATAAATGAGAAATTTGAGGAAAAATGGAGTAAAATACTGGAGCTGCTAAGACACATGGTTGCACAGAA  
 GGTGAAACCAAATCTTCAGACTTTAATACCATTCTGAAATGTCTCCGAAGATTTTATGTGTTTGAAGA  
 TCGCCAGCCTTACAGGTTTTACGTGAAATGAAAGCCATTGGAATAGAACCCTCGCTTGAACATATCACC  
 ATATTATTCGCTGTTTGTGATCAACCTGGAGACCCTTTAAAGAGATCATCCTTCATATTTATGATATAAT  
 GAATGAATTAATGGGAAAAGAGATTTTCTCAAAGGACCCGGATGATGATAAGTTTTTTTCAGTCAGCCATG  
 AGCATATGCTCATCTCTCAGAGATCTAGAACTGCCTACCAAGTACATGGCCTTTTAAAAACCGGAGACA  
 ACTGGAATTCATTGGACCTGATCAACATCGTAATTTCTATTATTCGAAGTTCTTCGATTGATTGTCT  
 AATGGAACAAATGATGTTACCTTGAAGTGGTATGAGGACCTGATACCTCAGCCTACTTTCCCACTCC  
 CAAACAATGATACATCTTCTCAAGCATTGGATGTGGCCAATCGGCTAGAAGTATTCTAAAATTTGGA  
 AAGATAGTAAAGAATATGGTCATACTTTCCGCAGTGACCTGAGAGAAGAGATCCTGATGCTCATGGCAAG  
 GGACAAGCACCCACCAGAGCTTCAGGTGGCATTGCTGACTGTGCTGCTGATATCAAATCTGCGTATGAA  
 AGCCAACCCATCAGACAGACTGCTCAGGATTGGCCAGCCACCTCTCAACTGTATAGCTATCCTCTTTT  
 TAAGGGCTGGGAGAACTCAGGAAGCCTGGAAAATGTTGGGGCTTTTCAGGAAGCATAATAAGATTCTTAG  
 AAGTGAGTTGCTGAATGAGCTTATGGACAGTGCAAAGTGTCTAACAGCCCTTCCAGGCCATTGAAGTA  
 GTAGAGCTGGCAAGTGCCTTCAGCTTACCTATTTGTGAGGGCCTCACCCAGAGAGTAATGAGTGATTTTG  
 CAATCAACCAGGAACAAAAGGAAGCCCTAAGTAATCTAACTGCATTGACCAGTGACAGTGATACTGACAG  
 CAGCAGTGACAGCGACAGTGACACCAGTGAAGGCAAA

**ACGCGT**ACGCGGGCCGCTCGAGCAGAAACTCATCTCAGAAGAGGATCTGGCAGCAAATGATATCCTGGATT  
 ACAAGGATGACGACGATAAAGTTTAA

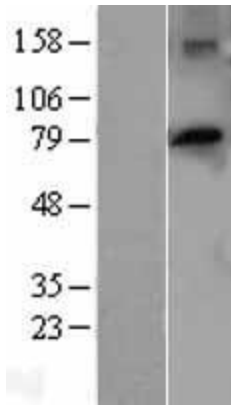


- Components:** The ORF clone is ion-exchange column purified and shipped in a 2D barcoded Matrix tube containing 10ug of transfection-ready, dried plasmid DNA (reconstitute with 100 ul of water).
- Reconstitution Method:**
1. Centrifuge at 5,000xg for 5min.
  2. Carefully open the tube and add 100ul of sterile water to dissolve the DNA.
  3. Close the tube and incubate for 10 minutes at room temperature.
  4. Briefly vortex the tube and then do a quick spin (less than 5000xg) to concentrate the liquid at the bottom.
  5. Store the suspended plasmid at -20°C. The DNA is stable for at least one year from date of shipping when stored at -20°C.
- Note:** Plasmids are not sterile. For experiments where strict sterility is required, filtration with 0.22um filter is required.
- RefSeq:** [NM\\_017952.6](#)
- RefSeq Size:** 6708 bp
- RefSeq ORF:** 2070 bp
- Locus ID:** 55037
- UniProt ID:** [Q96EY7](#)
- Cytogenetics:** 2p11.2
- Domains:** PPR
- MW:** 78.4 kDa
- Gene Summary:** Mitochondrial RNA-binding protein that has a role in mitochondrial translation. [UniProtKB/Swiss-Prot Function]

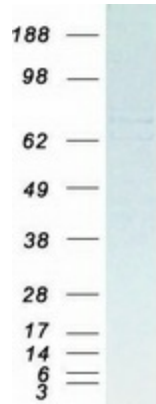
**Product images:**



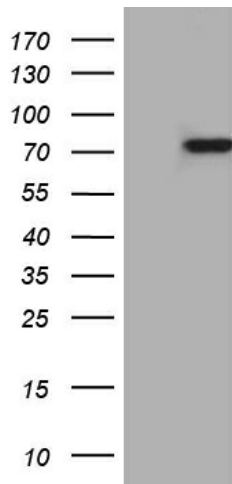
Circular map for RC204119



Western blot validation of overexpression lysate (Cat# [LY402633]) using anti-DDK antibody (Cat# [TA50011-100]). Left: Cell lysates from untransfected HEK293T cells; Right: Cell lysates from HEK293T cells transfected with RC204119 using transfection reagent MegaTran 2.0 (Cat# [TT210002]).



Coomassie blue staining of purified PTCD3 protein (Cat# [TP304119]). The protein was produced from HEK293T cells transfected with PTCD3 cDNA clone (Cat# RC204119) using MegaTran 2.0 (Cat# [TT210002]).



HEK293T cells were transfected with the pCMV6-ENTRY control (Cat# [PS100001], Left lane) or pCMV6-ENTRY PTCD3 (Cat# RC204119, Right lane) cDNA for 48 hrs and lysed. Equivalent amounts of cell lysates (5 ug per lane) were separated by SDS-PAGE and immunoblotted with anti-PTCD3 (Cat# [TA810262]). Positive lysates [LY402633] (100ug) and [LC402633] (20ug) can be purchased separately from OriGene.