

Product datasheet for **RC204118**

PLEKHB2 (NM_017958) Human Tagged ORF Clone

Product data:

Product Type:	Expression Plasmids
Product Name:	PLEKHB2 (NM_017958) Human Tagged ORF Clone
Tag:	Myc-DDK
Symbol:	PLEKHB2
Synonyms:	EVT2
Mammalian Cell Selection:	Neomycin
Vector:	pCMV6-Entry (PS100001)
E. coli Selection:	Kanamycin (25 ug/mL)
ORF Nucleotide Sequence:	>RC204118 ORF sequence Red=Cloning site Blue=ORF Green=Tags(s)

TTTTGTAATACGACTCACTATAGGGCGCCGGGAATTCGTCGACTGGATCCGGTACCGAGGAGATCTGCC
GCC**CGATCGCC**

ATGGCGTTTGTGAAGAGTGGCTGGTTGCTGCGACAGAGTACTATTTTGAAGCGCTGGAAGAAGAACTGGT
TTGATCTGTGGTCGGATGGTCACCTGATCTATTATGATGACCAGACTCGGCAGAATATCGAGGATAAGGT
CCACATGCCAATGGACTGCATCAACATCCGCACGGGGCAGGAATGTCGGGATACTAGCCCCGGATGGA
AAGTCAAAGACTGCATGCTCCAGATTGTTTGTGCGAGATGGGAAAACAATTAGTCTTTGTGCAGAAAAGCA
CAGATGATTGCTTGGCCTGGAAATTTACTCTCAAGATTCTAGGACAAACACAGCGTATGTGGGCTCTGC
AGTCATGACCGATGAGACATCCGTGGTTTCCTCACCTCCACCATACACGGCTATGCTGCACCGGCCCT
GAGCAGGCTTATGGCTATGGGCCATACGGTGGTGCGTACCGCCAGGAACTCAAGTTGTCTACGCTGCGA
ATGGGCAGGCGTATGCCGTGCCCTACCAAGTACCATATGCAGGACTTTATGGACAGCAGCCTGCTAACCA
AGTCATCATTCGAGAGCGCTATCGAGACAACGACAGCGACCTGGCACTGGGCATGCTGGCAGGAGCAGCC
ACGGCATGGCCTTAGGGTCTCTATTTTGGGTCTTC

ACGCGTACGCGGGCCGCTCGAGCAGAACTCATCTCAGAAGAGGATCTGGCAGCAAATGATATCCTGGATT
ACAAGGATGACGACGATAAGGTTTAA



[View online »](#)

Protein Sequence: >RC204118 protein sequence
Red=Cloning site Green=Tags(s)

MAFVKSGWLLRQSTILKRWKNWFDLWSDGHLIYYDDQTRQNIEDKVHMPMDCINIRTGQECRDTQPPDG
 KSKDCMLQIVCRDGKTIISLCAESTDDCLAWKFTLQDSRTNTAYVGSVMTDETSVSSPPPYTAYAAPAP
 EQAYGYGPYGGAYPPGTQVYYAANGQAYAVPYQYPYAGLYGQQPANQVIIRERYRDNDSDLALGMLAGAA
 TGMALGSLFWVF

TRTRPLEQKLISEEDLAANDILDYKDDDDKV

Chromatograms: https://cdn.origene.com/chromatograms/mk6568_d10.zip

Restriction Sites: SgfI-MluI

Cloning Scheme:



ACCN: NM_017958

ORF Size: 666 bp

OTI Disclaimer: The molecular sequence of this clone aligns with the gene accession number as a point of reference only. However, individual transcript sequences of the same gene can differ through naturally occurring variations (e.g. polymorphisms), each with its own valid existence. This clone is substantially in agreement with the reference, but a complete review of all prevailing variants is recommended prior to use. [More info](#)

OTI Annotation: This clone was engineered to express the complete ORF with an expression tag. Expression varies depending on the nature of the gene.

Components: The ORF clone is ion-exchange column purified and shipped in a 2D barcoded Matrix tube containing 10ug of transfection-ready, dried plasmid DNA (reconstitute with 100 ul of water).

Reconstitution Method:

1. Centrifuge at 5,000xg for 5min.
2. Carefully open the tube and add 100ul of sterile water to dissolve the DNA.
3. Close the tube and incubate for 10 minutes at room temperature.
4. Briefly vortex the tube and then do a quick spin (less than 5000xg) to concentrate the liquid at the bottom.
5. Store the suspended plasmid at -20°C. The DNA is stable for at least one year from date of shipping when stored at -20°C.

RefSeq: [NM_017958.2](#)

RefSeq Size: 4323 bp

RefSeq ORF: 666 bp

Locus ID: 55041

UniProt ID: [Q96CS7](#)

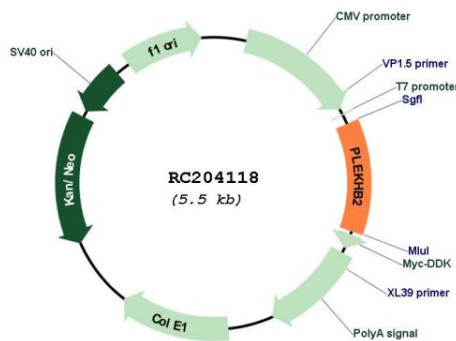
Cytogenetics: 2q21.1

Domains: PH

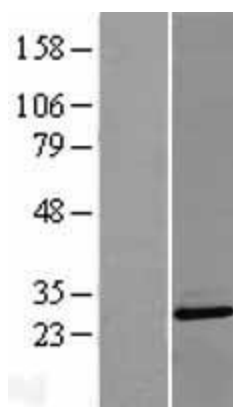
MW: 24.7 kDa

Gene Summary: Involved in retrograde transport of recycling endosomes.[UniProtKB/Swiss-Prot Function]

Product images:



Circular map for RC204118



Western blot validation of overexpression lysate (Cat# [LY413400]) using anti-DDK antibody (Cat# [TA50011-100]). Left: Cell lysates from untransfected HEK293T cells; Right: Cell lysates from HEK293T cells transfected with RC204118 using transfection reagent MegaTran 2.0 (Cat# [TT210002]).