

Product datasheet for **RC204114**

NLE1 (NM_018096) Human Tagged ORF Clone

Product data:

Product Type:	Expression Plasmids
Product Name:	NLE1 (NM_018096) Human Tagged ORF Clone
Tag:	Myc-DDK
Symbol:	NLE1
Synonyms:	NLE
Mammalian Cell Selection:	Neomycin
Vector:	pCMV6-Entry (PS100001)
E. coli Selection:	Kanamycin (25 ug/mL)



[View online »](#)

ORF Nucleotide Sequence:

>RC204114 ORF sequence
 Red=Cloning site Blue=ORF Green=Tags(s)

TTTTGTAATACGACTCACTATAGGGCGGCCGGAATTCGTCGACTGGATCCGGTACCGAGGAGATCTGCC
 GCC**GCGATCGCC**

ATGGCGGCAGCAGTGGCGGACGAGGCGGTGGCGCGCATGTGCAGCGTTGCTAGTGCAGTTCAGGATG
 AGGGCGGCAGCTGCTGGTTCCCCGTTTCGACGTGCCCGTGGACATCACCCCGGACAGGCTGCAGCTCGT
 GTGCAACGCGCTACTGGCCAGGAGGATCCCCTGCCACTGGCTTTCTTTGTCCACAGTGTGAGATCGTC
 TCCTCACTGGGAAGACGTTGGAGTCCCAGGCAGTGGAGACAGAGAAGGTCTAGACATCATCTACCAGC
 CACAGGCTATCTTCAGAGTCCGGCTGTGACTCGCTGCACCAGCTCCTTGGAGGGTACAGTGGGCAGT
 CATTCTGTGGCCTTCAGCCCTACGGGAAAGTACCTGGCCAGTGGCTCTGGAGACACCACCGTGCCTTC
 TGGGATCTCAGCACAGACACCACATTCACATGCAAGGGACACAGACTGGGTCCTTAGTATATCCT
 GGTCTCCAGATGGCAAGAAGCTGGCCTCAGGCTGCAAGAATGGCCAGATTCTCCTCTGGACCCAAGCAC
 AGGAAGCAGGTGGCAGGACCCTCGCTGGCCACAGCAAGTGGATCACAGCCTGAGCTGGGAGCCCTC
 CATGCGAACCCCTGAGTGCCTATGTGGCCAGCAGCTCCAAGGATGGCAGTGTGCGGATCTGGGACAAA
 CTGCAGGCCGCTGTGAGCGCATCCTCACCGGGCACCCAGTCCGTACCTGTCTCCGGTGGGGAGGGGA
 CGGGCTTCTACTCTGCCTCCCAGGACCCACCATCAAAGTCTGGAGAGCTCATGACGGTGTGCTGTGC
 CGGACTCTGCAAGGCCACGGCCACTGGGTGAACACCATGGCCCTCAGCACTGACTATGCCCTGCGCACTG
 GGGCCTTTGAACCTGTGAGGCCTCAGTTAATCCCAAGACCTCCAAGGATCCTTGCAAGGAGTTGAAGGA
 GAGGGCTCTGAGCCGATAACAACCTCGTGGGGGCCAGGGTCCAGAGAGGCTGGTGTCTGGCTCCGACGAC
 TTCACCTTATTCCTGTGGTCCCCAGCAGAGGACAAAAAGCCTCTCACTCGGATGACAGGACACCAAGCTC
 TCATCAACCAGGTGCTCTTCTCTCTGACTCCCGCATCGTGGCTAGTGCCTCCTTTGACAAGTCCATCAA
 GCTGTGGGATGGCAGGACGGGCAAGTACCTGGCTTCCCTACGCGGCCACGTGGCTGCCGTGACCCAGATT
 CGTGGTGTGAGTGTGAGTGTGAGTGTGAGTGTGAGTGTGAGTGTGAGTGTGAGTGTGAGTGTGAGTGTGAG
 AGGCCAGAAGCTGGCCATGGACCTGCCCGGCCACGCGGATGAGGTATATGCTGTTGACTGGAGTCCAGA
 TGGCCAGAGAGTGGCAAGTGGTGGGAAGGACAAATGCCTCCGGATATGGAGGAGA

ACGCGTACGCGGCCGCTCGAGCAGAACTCATCTCAGAAGAGGATCTGGCAGCAATGATATCCTGGATT
 ACAAGGATGACGACGATAAGGTTTAA

Protein Sequence:

>RC204114 protein sequence
 Red=Cloning site Green=Tags(s)

MAAAVADEAVARDVQRLLVQFQDEGGQLLGSPFDVVDITPDRLQLVCNALLAQEDPLPLAFFVHDAEIV
 SSLGKTLSEQAVETEKVLDIIYQPQAI FRVRAVTRCTSSLEGHSEAVISVAFSPTGKYLASGSGDITVRF
 WDLSTETPHFTCKGHRHWVLSISWSPDGKKLASGCKNGQILLWDPSTGKQVGRTLAGHSKWTGLSWEPL
 HANPECRYVASSSKDGSVRIWDTTAGRCERILTGHTQSVTCLRWGGDGLLYSASQDRTIKVWRAHDGVL
 RTLQGHGHVNTMALSTDYALRTGAFEPAEASVNPQDLQGSLLQELKERALSRYNLVRGQGERLVS
 GSDDFTLFLWSPAEDKKPLTRMTGHQALINQVLFSPDSRIVASASFDKSIKLWDGRTGKYLASLRGH
 VAAVYQI AWSADSRLLVSGSSDSTLKVWDVKAQKLAAMDLPGHAEVYAVDWSPDGQRVASGGKDKCLRIWRR

TRTRPLEQKLI SEEDLAANDILDYKDDDDKV

Chromatograms:

https://cdn.origene.com/chromatograms/mk6567_f10.zip

Restriction Sites:

SgfI-MluI

Cloning Scheme:

Cloning sites used for ORF Shutting:



* The last codon before the Stop codon of the ORF

ACCN: NM_018096

ORF Size: 1455 bp

OTI Disclaimer: The molecular sequence of this clone aligns with the gene accession number as a point of reference only. However, individual transcript sequences of the same gene can differ through naturally occurring variations (e.g. polymorphisms), each with its own valid existence. This clone is substantially in agreement with the reference, but a complete review of all prevailing variants is recommended prior to use. [More info](#)

OTI Annotation: This clone was engineered to express the complete ORF with an expression tag. Expression varies depending on the nature of the gene.

Components: The ORF clone is ion-exchange column purified and shipped in a 2D barcoded Matrix tube containing 10ug of transfection-ready, dried plasmid DNA (reconstitute with 100 ul of water).

Reconstitution Method:

1. Centrifuge at 5,000xg for 5min.
2. Carefully open the tube and add 100ul of sterile water to dissolve the DNA.
3. Close the tube and incubate for 10 minutes at room temperature.
4. Briefly vortex the tube and then do a quick spin (less than 5000xg) to concentrate the liquid at the bottom.
5. Store the suspended plasmid at -20°C. The DNA is stable for at least one year from date of shipping when stored at -20°C.

RefSeq: [NM_018096.2](#)
RefSeq Size: 2627 bp

RefSeq ORF: 1458 bp

Locus ID: 54475

UniProt ID: [Q9NVX2](#)
Cytogenetics: 17q12

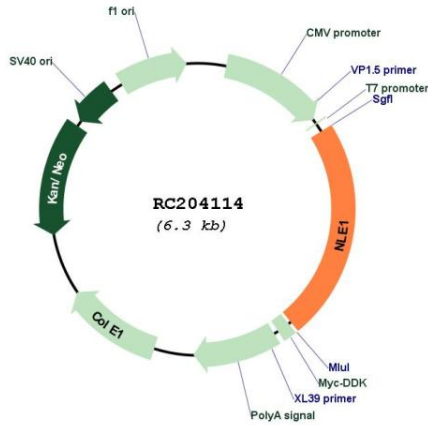
Domains: WD40

Protein Families: Druggable Genome, Stem cell - Pluripotency

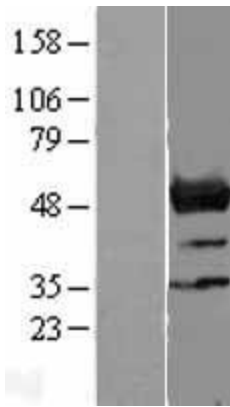
MW: 53.3 kDa

Gene Summary: Plays a role in regulating Notch activity. Plays a role in regulating the expression of CDKN1A and several members of the Wnt pathway, probably via its effects on Notch activity. Required during embryogenesis for inner mass cell survival (By similarity).[UniProtKB/Swiss-Prot Function]

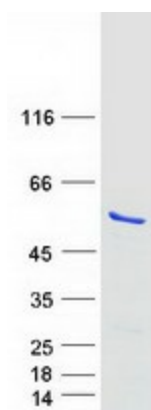
Product images:



Circular map for RC204114



Western blot validation of overexpression lysate (Cat# [LY413312]) using anti-DDK antibody (Cat# [TA50011-100]). Left: Cell lysates from untransfected HEK293T cells; Right: Cell lysates from HEK293T cells transfected with RC204114 using transfection reagent MegaTran 2.0 (Cat# [TT210002]).



Coomassie blue staining of purified NLE1 protein (Cat# [TP304114]). The protein was produced from HEK293T cells transfected with NLE1 cDNA clone (Cat# RC204114) using MegaTran 2.0 (Cat# [TT210002]).