

Product datasheet for **RC204112**

TEM8 (ANTXR1) (NM_018153) Human Tagged ORF Clone

Product data:

Product Type:	Expression Plasmids
Product Name:	TEM8 (ANTXR1) (NM_018153) Human Tagged ORF Clone
Tag:	Myc-DDK
Symbol:	TEM8
Synonyms:	ATR; GAPO; TEM8
Mammalian Cell Selection:	Neomycin
Vector:	pCMV6-Entry (PS100001)
E. coli Selection:	Kanamycin (25 ug/mL)
ORF Nucleotide Sequence:	>RC204112 ORF sequence Red=Cloning site Blue=ORF Green=Tags(s)

TTTTGTAATACGACTCACTATAGGGCGGCCGGAATTCGTCGACTGGATCCGGTACCGAGGAGATCTGCC
GCC**CGATCGCC**

ATGGCCACGGCGGAGCGGAGAGCCCTCGGCATCGGCTTCCAGTGGCTCTCTTTGGCCACTCTGGTGTCTCA
TCTGCGCCGGCAAGGGGACGCAGGGAGGATGGGGTCCAGCCTGCTACGGCGGATTTGACCTGTACTT
CATTTTGGACAAATCAGGAAGTGTGCTGCACCACTGGAATGAAATCTATTACTTTGTGGAACAGTTGGCT
CACAAATTCATCAGCCACAGTTGAGAATGTCCTTTATTGTTTTCTCCACCCGAGGAACAACCTTAATGA
AACTGACAGAAGACAGAGAACAATCCGTCAAGGCCTAGAAGAACTCCAGAAAGTTCTGCCAGGAGGAGA
CACTTACATGCATGAAGGATTTGAAAGGCCAGTGAGCAGATTTATTATGAAAACAGACAAGGGTACAGG
ACAGCCAGCGTCATCATTGCTTTGACTGATGGAGAACTCCATGAAGATCTCTTTTCTATTTCAGAGAGGG
AGGCTAATAGGTCTCGAGATCTTGGTGAATTGTTTACTGTGTTGGTGTGAAAGATTTCAATGAGACACA
GCTGGCCCGGATTGCGGACAGTAAGGATCATGTGTTTCCCGTGAATGACGGCTTTCAGGCTCTGCAAGGC
ATCATCCACTCAATTTGAAGAAGTCTGCATCGAAATTTAGCAGCTGAACCATCCACCATATGTGCAG
GAGAGTCAATTTCAAGTTGTCGTGAGAGGAAACGGCTTCCGACATGCCCGCAACGTGGACAGGGTCCCTCTG
CAGCTTCAAGATCAATGACTCGGTCACACTCAATGAGAAGCCCTTTTCTGTGGAAGATACTTATTTACTG
TGTCAGCGCCTATCTTAAAAGAAGTTGGCATGAAAGCTGCACTCCAGGTCAGCATGAACGATGGCCTCT
CTTTTATCTCCAGTTCTGTCATCATCACCACCACACTGTAGCCTCCACAAAATTGCATCAGGCCCCAC
AACAGCTGCTTGCATGGAA

ACGCGTACGCGGCCGCTCGAGCAGAAACTCATCTCAGAAGAGGATCTGGCAGCAAATGATATCCTGGATT
ACAAGGATGACGACGATAAGGTTTAA



[View online »](#)

Protein Sequence: >RC204112 protein sequence
Red=Cloning site Green=Tags(s)

MATAERRALGIGFQWLSLATLVLICAGQGGREDGGPACYGGFDLYFILDKSGSVLHHWNEIYYFVEQLA
 HKFISPQLRMSFIVFSTRGTTMLKLTEDREQIRQGLEELQKVLPGDGYMHEGFERASEQIYYENRQGYR
 TASVIIALTDGELHEDLFFYSEREANRSRDLGAIYYCVGVKDFNETQLARIADSKDHVFPVNDGFQALQG
 IIHSILKKSCIEILAAEPSTICAGESFQVVVRNGFRHARNVDRVLCFSKINDSVTLNEKPFVSDETYLL
 CPAPILKEVGMKAALQVSMNDGLSFISVVIIITTHCSLHKIASGPTTAACME

TRTRPLEQKLISEEDLANDILDYKDDDDKV

Chromatograms: https://cdn.origene.com/chromatograms/mk6060_f03.zip

Restriction Sites: SgfI-MluI

Cloning Scheme:



ACCN: NM_018153

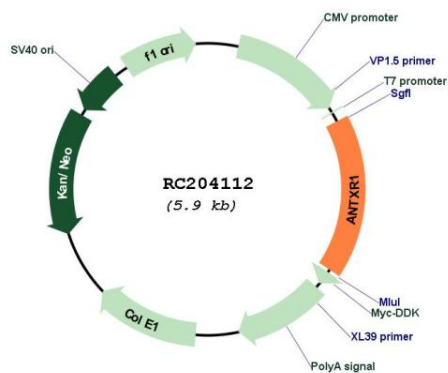
ORF Size: 999 bp

OTI Disclaimer: Due to the inherent nature of this plasmid, standard methods to replicate additional amounts of DNA in E. coli are highly likely to result in mutations and/or rearrangements. Therefore, OriGene does not guarantee the capability to replicate this plasmid DNA. Additional amounts of DNA can be purchased from OriGene with batch-specific, full-sequence verification at a reduced cost. Please contact our customer care team at custsupport@origene.com or by calling 301.340.3188 option 3 for pricing and delivery.

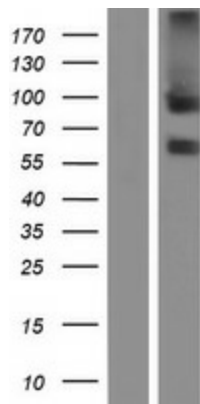
The molecular sequence of this clone aligns with the gene accession number as a point of reference only. However, individual transcript sequences of the same gene can differ through naturally occurring variations (e.g. polymorphisms), each with its own valid existence. This clone is substantially in agreement with the reference, but a complete review of all prevailing variants is recommended prior to use. [More info](#)

OTI Annotation:	This clone was engineered to express the complete ORF with an expression tag. Expression varies depending on the nature of the gene.
Components:	The ORF clone is ion-exchange column purified and shipped in a 2D barcoded Matrix tube containing 10ug of transfection-ready, dried plasmid DNA (reconstitute with 100 ul of water).
Reconstitution Method:	<ol style="list-style-type: none">1. Centrifuge at 5,000xg for 5min.2. Carefully open the tube and add 100ul of sterile water to dissolve the DNA.3. Close the tube and incubate for 10 minutes at room temperature.4. Briefly vortex the tube and then do a quick spin (less than 5000xg) to concentrate the liquid at the bottom.5. Store the suspended plasmid at -20°C. The DNA is stable for at least one year from date of shipping when stored at -20°C.
RefSeq:	NM_018153.3
RefSeq Size:	2360 bp
RefSeq ORF:	1002 bp
Locus ID:	84168
UniProt ID:	Q9H6X2
Cytogenetics:	2p13.3
Domains:	VWA
Protein Families:	Druggable Genome, Transmembrane
MW:	37.1 kDa
Gene Summary:	This gene encodes a type I transmembrane protein and is a tumor-specific endothelial marker that has been implicated in colorectal cancer. The encoded protein has been shown to also be a docking protein or receptor for Bacillus anthracis toxin, the causative agent of the disease, anthrax. The binding of the protective antigen (PA) component, of the tripartite anthrax toxin, to this receptor protein mediates delivery of toxin components to the cytosol of cells. Once inside the cell, the other two components of anthrax toxin, edema factor (EF) and lethal factor (LF) disrupt normal cellular processes. Three alternatively spliced variants that encode different protein isoforms have been described. [provided by RefSeq, Oct 2008]

Product images:



Circular map for RC204112



Western blot validation of overexpression lysate (Cat# [LY413252]) using anti-DDK antibody (Cat# [TA50011-100]). Left: Cell lysates from untransfected HEK293T cells; Right: Cell lysates from HEK293T cells transfected with RC204112 using transfection reagent MegaTran 2.0 (Cat# [TT210002]).



Coomassie blue staining of purified ANXR1 protein (Cat# [TP304112]). The protein was produced from HEK293T cells transfected with ANXR1 cDNA clone (Cat# RC204112) using MegaTran 2.0 (Cat# [TT210002]).