

## Product datasheet for **RC204103**

### **PACSIN3 (NM\_016223) Human Tagged ORF Clone**

#### **Product data:**

Product Type:	Expression Plasmids
Product Name:	PACSIN3 (NM_016223) Human Tagged ORF Clone
Tag:	Myc-DDK
Symbol:	PACSIN3
Synonyms:	SDPIII
Mammalian Cell Selection:	Neomycin
Vector:	pCMV6-Entry (PS100001)
E. coli Selection:	Kanamycin (25 ug/mL)



[View online »](#)

**ORF Nucleotide Sequence:**

>RC204103 ORF sequence  
 Red=Cloning site Blue=ORF Green=Tags(s)

TTTTGTAATACGACTCACTATAGGGCGGCCGGAATTCGTCGACTGGATCCGGTACCGAGGAGATCTGCC  
 GCC**CGGATCGCC**

ATGGCTCCAGAAGAGGACGCTGGAGGGGAGGCCTTAGGGGACAGTTTCTGGGAGGCTGGCAACTACAGGC  
 GCACGGTACAGCGGGTGGAGGACGGGCACCGGCTGTGCGGGACCTGGTACAGCTGCTTCCAGGAGCGCGC  
 CCGCATCGAGAAGGCTTATGCCAGCAGTTGGCTGACTGGGCCGAAAGTGGAGGGGACCGTGGAGAAG  
 GGCCCCAGTATGGCACACTGGAGAAGGCTGGCATGCCTTTTTACGGCGGCTGAGCGGCTGAGCGCGC  
 TGCACCTGGAGGTGCGGGAGAAGCTGCAAGGGCAGGACAGTGAAGCGGCTGCGCGCTGGCAGCGGGGGC  
 TTTCCACCGGCTGTGCTGGGCGGCTCCGCGAGAGCCGGGCGGCGGAGGACGGCTCCGCAAGGCCAG  
 AAGCCCTGGTGAAGAGGCTGAAGGAGTTGAGGCTTCCAAGAAAAGCTACCACGCAGCCCGAAGGATG  
 AGAAGACCGCCAGACGAGGGAGAGCCACGAAAGGCAGACAGCGCGTCTCCAGGAGCAGCTGCGCAA  
 ACTGCAGGAACGGGTGGAACGCTGTGCCAAGGAGGCCGAGAAGACAAAAGCTCAGTATGAGCAGACGCTG  
 GCAGAGCTGCATCGCTACACTCCAGCTACATGGAGGACATGGAACAGGCCCTTTGAGACCTGCCAGGCCG  
 CCGAGCGCCAGCGGCTTCTTTTCTCAAGGATATGCTGCTCACCTTACACCAGCACCTGGACCTTCCAG  
 CAGTGAGAAGTTCATGAACTCCACCGTGAATTGCACCAGGGCATTGAGGCAGCCAGTGACGAAGAGGAT  
 CTGCGCTGGTGGCGCAGCACCCACGGGCCAGGCATGGCCATGAATGGCCACAGTTCGAGGAGTGGTCTT  
 TGGACACACAGAGGACAATCAGCCGAAAGAGAAGGTTGGCCGGAGCCCTGATGAGGTTACCCTGACCAG  
 CATTGTGCTACAAGAGATGGCACCGCACCCCAAGTCCCGGGTCCCGAGGCAGGGGACAGGAT  
 GAGGAGTGGTCAAGAGAGTCCCGGAAGGCTGCCACCGGGTTCGGGTGAGGGCACTCTATGACT  
 ACGCTGGCCAGGAAGCTGATGAGCTGAGCTTCCGAGCAGGGGAGGAGCTGCTGAAGATGAGTGAGGAGGA  
 CGAGCAGGGCTGGTGCCAAGGCCAGTTGCAGAGTGGCCGATTGGCTGTACCCTGCCAACTACGTGGAG  
 TGTGTGGGCGCC

**ACGCGT**ACGCGGCGGCTCGAGCAGAACTCATCTCAGAAGAGGATCTGGCAGCAAATGATATCCTGGATT  
 ACAAGGATGACGACGATAAGGTTTAA

**Protein Sequence:**

>RC204103 protein sequence  
 Red=Cloning site Green=Tags(s)

MAPEEDAGGEALGGSFWEAGNYRRTVQRVEDGHRLCGDLVSCFQERARIEKAYAQLADWARKWRGTVEK  
 GPQYGTLEKAWHAFFTAERLSALHLEVREKLQGDSEVRVWQRFHFRPVLGGFRESRAAEDGFRKAQ  
 KPWLKRLKEVEASKKSYHAARKDEKTAQTRESHAKADSAVSQEQLRKLQERVERCAKEAEKTKAQYEQTL  
 AELHRYTPRYMEDMEQAFETCQAAERQRLFFKDMLLTLHQHLDLSSSEKFHELHRDLHQGIEAASDEED  
 LRWWRSTHGPGMAMNWPQFEWSLDQRTISRKEKGGSPDEVTLTIVPTRDGTAPPPQSPGSPGTGQD  
 EEWSDEESPRKAATGVRVRALYDYAGQEDELFRAGEELLKMSEEDEQWQCQQLQSGRIGLYPANYVE  
 CVGA

**TR**TRPLEQKLISEEDLAANDILDYKDDDDKV

**Chromatograms:**

[https://cdn.origene.com/chromatograms/mk6058\\_c12.zip](https://cdn.origene.com/chromatograms/mk6058_c12.zip)

**Restriction Sites:**

Sgfl-Mlul

**Cloning Scheme:**


**ACCN:** NM\_016223

**ORF Size:** 1272 bp

**OTI Disclaimer:** The molecular sequence of this clone aligns with the gene accession number as a point of reference only. However, individual transcript sequences of the same gene can differ through naturally occurring variations (e.g. polymorphisms), each with its own valid existence. This clone is substantially in agreement with the reference, but a complete review of all prevailing variants is recommended prior to use. [More info](#)

**OTI Annotation:** This clone was engineered to express the complete ORF with an expression tag. Expression varies depending on the nature of the gene.

**Components:** The ORF clone is ion-exchange column purified and shipped in a 2D barcoded Matrix tube containing 10ug of transfection-ready, dried plasmid DNA (reconstitute with 100 ul of water).

**Reconstitution Method:**

1. Centrifuge at 5,000xg for 5min.
2. Carefully open the tube and add 100ul of sterile water to dissolve the DNA.
3. Close the tube and incubate for 10 minutes at room temperature.
4. Briefly vortex the tube and then do a quick spin (less than 5000xg) to concentrate the liquid at the bottom.
5. Store the suspended plasmid at -20°C. The DNA is stable for at least one year from date of shipping when stored at -20°C.

**RefSeq:** [NM\\_016223.5](#)

**RefSeq Size:** 1917 bp

**RefSeq ORF:** 1275 bp

**Locus ID:** 29763

**UniProt ID:** [Q9UKS6](#)

**Cytogenetics:** 11p11.2

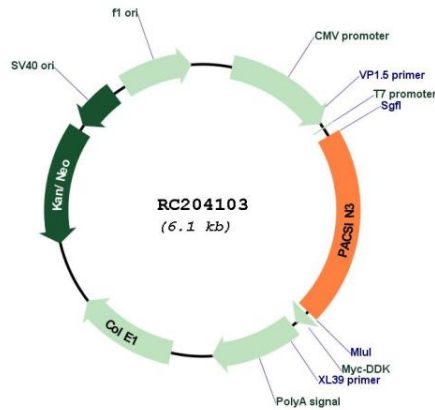
**Domains:** FCH, SH3

**Protein Families:** Druggable Genome

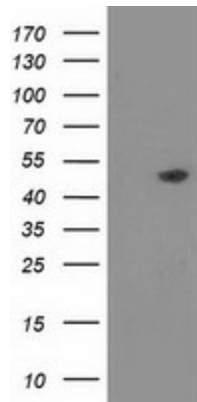
**MW:** 48.5 kDa

**Gene Summary:** This gene is a member of the protein kinase C and casein kinase substrate in neurons family. The encoded protein is involved in linking the actin cytoskeleton with vesicle formation. Alternative splicing results in multiple transcript variants. [provided by RefSeq, May 2010]

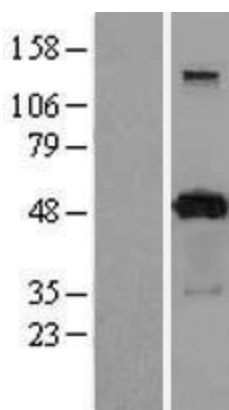
**Product images:**



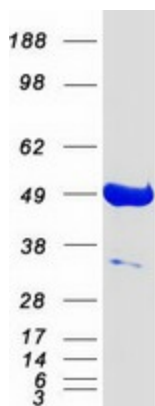
Circular map for RC204103



HEK293T cells were transfected with the pCMV6-ENTRY control (Cat# [PS100001], Left lane) or pCMV6-ENTRY PACSIN3 (Cat# RC204103, Right lane) cDNA for 48 hrs and lysed. Equivalent amounts of cell lysates (5 ug per lane) were separated by SDS-PAGE and immunoblotted with anti-PACSIN3 (Cat# [TA502249]). Positive lysates [LY414084] (100ug) and [LC414084] (20ug) can be purchased separately from OriGene.



Western blot validation of overexpression lysate (Cat# [LY414084]) using anti-DDK antibody (Cat# [TA50011-100]). Left: Cell lysates from untransfected HEK293T cells; Right: Cell lysates from HEK293T cells transfected with RC204103 using transfection reagent MegaTran 2.0 (Cat# [TT210002]).



Coomassie blue staining of purified PACSIN3 protein (Cat# [TP304103]). The protein was produced from HEK293T cells transfected with PACSIN3 cDNA clone (Cat# RC204103) using MegaTran 2.0 (Cat# [TT210002]).