

Product datasheet for **RC204098**

NDUFA4L2 (NM_020142) Human Tagged ORF Clone

Product data:

Product Type: Expression Plasmids
Product Name: NDUFA4L2 (NM_020142) Human Tagged ORF Clone

Tag: Myc-DDK

Symbol: NDUFA4L2

Synonyms: COXFA4L2; NUOMS

Vector: pCMV6-Entry (PS100001)

E. coli Selection: Kanamycin (25 ug/mL)

Cell Selection: Neomycin

ORF Nucleotide Sequence: >RC204098 ORF sequence
Red=Cloning site Blue=ORF Green=Tags(s)

TTTTGTAATACGACTCACTATAGGGCGCCGGAATTCGTCGACTGGATCCGGTACCGAGGAGATCTGCC
GCC**GCGATCGCC**

ATGGCAGGAGCCAGTCTTGGGGCCGTTCTACCGGCAGATCAAAGACATCCGGGGATCATCCCGATGA
TCGGCTTAATCTGCCTGGGCATGGGCAGCGCTGCGCTTTACTTGCTGCGACTCGCCCTTCGCAGCCCCGA
CGTCTGCTGGGACAGAAAGAACAACCCGGAGCCCTGGAACCGCTGAGCCCAATGACCAATACAAGTTC
CTTGCAAGTTCCACTGACTATAAGAAGCTGAAGAAGGACCGCCAGACTTC

ACGCGTACGCGGCCGCTCGAGCAGAAACTCATCTCAGAAGAGGATCTGGCAGCAAATGATATCCTGGATT
ACAAGGATGACGACGATAAGGTTTAA

Protein Sequence: >RC204098 protein sequence
Red=Cloning site Green=Tags(s)

MAGASLGARFYRQIKRHPGIIPMIGLICLGMGSAALYLLRLALRSPDVCWDRKNNPEPWNRSPNDQYKF
LAVSTDYKLLKDRPDF

TRTRPLEQKLISEEDLAANDILDYKDDDDKV

Chromatograms: https://cdn.origene.com/chromatograms/mk6059_e01.zip

Restriction Sites: SgfI-MluI

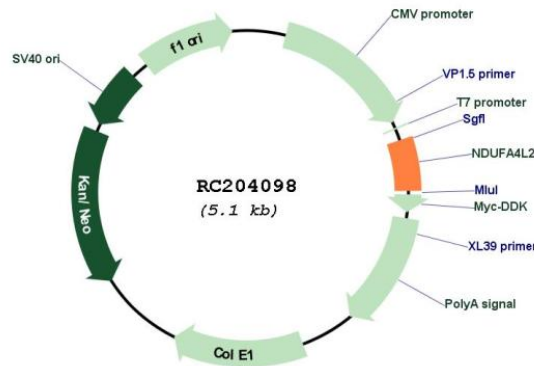


[View online »](#)

Cloning Scheme:



Plasmid Map:



ACCN:

NM_020142

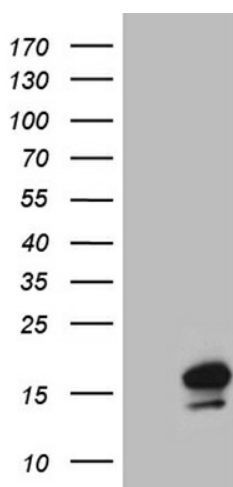
ORF Size:

261 bp

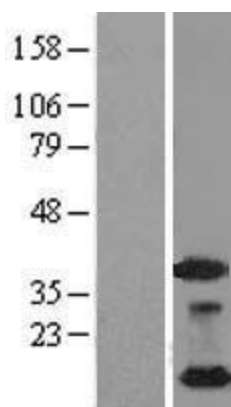
OTI Disclaimer:

The molecular sequence of this clone aligns with the gene accession number as a point of reference only. However, individual transcript sequences of the same gene can differ through naturally occurring variations (e.g. polymorphisms), each with its own valid existence. This clone is substantially in agreement with the reference, but a complete review of all prevailing variants is recommended prior to use. [More info](#)

OTI Annotation:	This clone was engineered to express the complete ORF with an expression tag. Expression varies depending on the nature of the gene.
Components:	The ORF clone is ion-exchange column purified and shipped in a 2D barcoded Matrix tube containing 10ug of transfection-ready, dried plasmid DNA (reconstitute with 100 ul of water).
Reconstitution Method:	<ol style="list-style-type: none">1. Centrifuge at 5,000xg for 5min.2. Carefully open the tube and add 100ul of sterile water to dissolve the DNA.3. Close the tube and incubate for 10 minutes at room temperature.4. Briefly vortex the tube and then do a quick spin (less than 5000xg) to concentrate the liquid at the bottom.5. Store the suspended plasmid at -20°C. The DNA is stable for at least one year from date of shipping when stored at -20°C.
RefSeq:	<u>NM_020142.3, NP_064527.1</u>
RefSeq Size:	1275 bp
RefSeq ORF:	264 bp
Locus ID:	56901
UniProt ID:	<u>Q9NRX3</u>
Cytogenetics:	12q13.3
Protein Families:	Transmembrane
Protein Pathways:	Alzheimer's disease, Huntington's disease, Metabolic pathways, Oxidative phosphorylation, Parkinson's disease
MW:	10 kDa

Product images:

HEK293T cells were transfected with the pCMV6-ENTRY control (Cat# [PS100001], Left lane) or pCMV6-ENTRY NDUFA4L2 (Cat# RC204098, Right lane) cDNA for 48 hrs and lysed. Equivalent amounts of cell lysates (5 ug per lane) were separated by SDS-PAGE and immunoblotted with anti-NDUFA4L2 (1:2000) (Cat# [TA810602]). Positive lysates [LY412631] (100ug) and [LC412631] (20ug) can be purchased separately from OriGene.



Western blot validation of overexpression lysate (Cat# [LY412631]) using anti-DDK antibody (Cat# [TA50011-100]). Left: Cell lysates from untransfected HEK293T cells; Right: Cell lysates from HEK293T cells transfected with RC204098 using transfection reagent MegaTran 2.0 (Cat# [TT210002]).