

Product datasheet for **RC204095**

SURF2 (NM_017503) Human Tagged ORF Clone

Product data:

Product Type:	Expression Plasmids
Product Name:	SURF2 (NM_017503) Human Tagged ORF Clone
Tag:	Myc-DDK
Symbol:	SURF2
Synonyms:	SURF-2
Mammalian Cell Selection:	Neomycin
Vector:	pCMV6-Entry (PS100001)
E. coli Selection:	Kanamycin (25 ug/mL)
ORF Nucleotide Sequence:	>RC204095 ORF sequence Red=Cloning site Blue=ORF Green=Tags(s)

TTTTGTAATACGACTCACTATAGGGCGGCCGGAATTCGTCGACTGGATCCGGTACCGAGGAGATCTGCC
GCC**CGATCGC**C

ATGAGCGAGTTGCCGGGCGACGTGCGGGCGTTTCTGCGGGAGCACCCGAGCCTGCGGCTCCAGACGGACG
CCCGCAAGGTGAGGTGCATCCTGACAGGTACGAGCTGCCCTGCCGCTGCCGGAGCTCCAGGTCTACAC
CCGCGGCAAAAAGTACCAGCGGCTGGTCCGCGCCTCCCCGGCCTTCGACTATGCAGAGTTCGAGCCGCAC
ATCGTGCCAGCACCAAGAACCAGCAGTTGTTCTGCAAACCTACCCTGCGGCACATCAACAAGTGCC
CAGAACACGTGCTGAGGCACACCAGGGCCGGCGGTACCAGCGAGCTCTGTGTAATATGAAGAATGTCA
GAAGCAAGGGGTGGAGTACGTGCCTGCCTGCCTGGTGCACCGGAGGAGGAGGAGGAGGACCAGATGGAC
GGTGACGGGCTCGCCCGCGGAAGCCTTCTGGGAGCCACATCCAGTGATGAGGGGGAGCTGCAAGTG
ATGACAGCATGACAGACCTGTACCCACCTGAGCTATTCACCAGAAAGGACCTTGGAAAGCAGGAGGATGG
GGATGGCACTGATGACTTTTGGACAGACAAAGAGGATGAGAAGGCAAAGCCCCAAGAGAGAAGGCCACT
GATGAGGGCAGGAGAGACGACCGTGTACCGAGGGCTGGTCCAGAAGCGCGGAAGAAGCAGTTGGGCT
CGTTGAAAAGAAGTTCAAGAGTCATCACCGCAAACCAAGAGCTTCAGCTCCTGTAACAGCCAGGT

ACGCGTACGCGGCCGCTCGAGCAGAACTCATCTCAGAAGAGGATCTGGCAGCAAATGATATCCTGGATT
ACAAGGATGACGACGATAAGGTTTAA



[View online »](#)

Protein Sequence: >RC204095 protein sequence
Red=Cloning site Green=Tags(s)

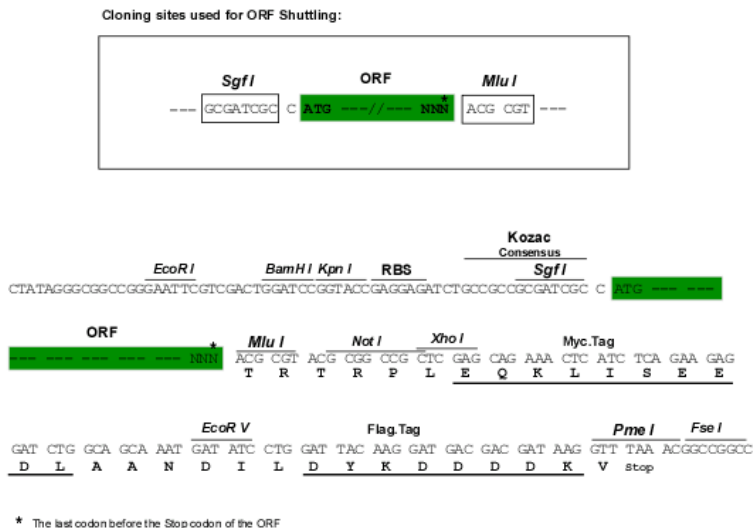
MSELPGDVRAFLREHPSLRLQTDARKVRCILTGHELPCRLPELQVYTRGKKYQRLVRASPAFDYAEFEPH
 IVPSTKNPHQLFCKLTLRHINKCPEHVL RHTQGRRYQRALCKYEECQKQVEYVPAQLVHRRRRRREDQMD
 GDGPRPREAFWEPTSSDEGGAASDDSM TDLYPPEL FTRKDLGSTEDGDGTD DDFLTDKEDEKAKPPREKAT
 DEGRRETTVYRGLVQKRGGKQLGSLKKKFKSHHRKPKSFSSCKQPG

TRTRPLEQKLISEEDLAANDILDYKDDDDKV

Chromatograms: https://cdn.origene.com/chromatograms/mk6431_b04.zip

Restriction Sites: SgfI-MluI

Cloning Scheme:



ACCN: NM_017503

ORF Size: 768 bp

OTI Disclaimer: The molecular sequence of this clone aligns with the gene accession number as a point of reference only. However, individual transcript sequences of the same gene can differ through naturally occurring variations (e.g. polymorphisms), each with its own valid existence. This clone is substantially in agreement with the reference, but a complete review of all prevailing variants is recommended prior to use. [More info](#)

OTI Annotation: This clone was engineered to express the complete ORF with an expression tag. Expression varies depending on the nature of the gene.

Components: The ORF clone is ion-exchange column purified and shipped in a 2D barcoded Matrix tube containing 10ug of transfection-ready, dried plasmid DNA (reconstitute with 100 ul of water).

Reconstitution Method:

1. Centrifuge at 5,000xg for 5min.
2. Carefully open the tube and add 100ul of sterile water to dissolve the DNA.
3. Close the tube and incubate for 10 minutes at room temperature.
4. Briefly vortex the tube and then do a quick spin (less than 5000xg) to concentrate the liquid at the bottom.
5. Store the suspended plasmid at -20°C. The DNA is stable for at least one year from date of shipping when stored at -20°C.

RefSeq: [NM_017503.5](#)

RefSeq Size: 851 bp

RefSeq ORF: 771 bp

Locus ID: 6835

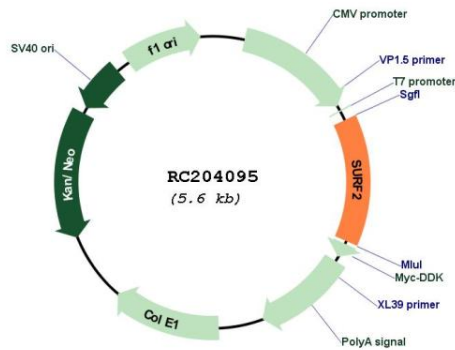
UniProt ID: [Q15527](#)

Cytogenetics: 9q34.2

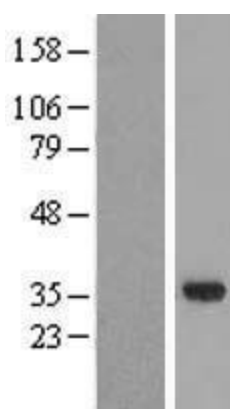
MW: 29.6 kDa

Gene Summary: This gene shares a bidirectional promoter with surfet 1 (SURF1; GeneID: 6834), which is located on the opposite strand. It encodes a conserved protein that is expressed in a variety of tissues. [provided by RefSeq, Jul 2013]

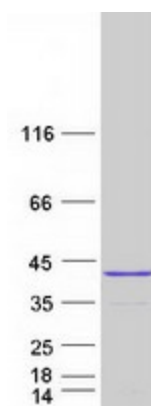
Product images:



Circular map for RC204095



Western blot validation of overexpression lysate (Cat# [LY413741]) using anti-DDK antibody (Cat# [TA50011-100]). Left: Cell lysates from untransfected HEK293T cells; Right: Cell lysates from HEK293T cells transfected with RC204095 using transfection reagent MegaTran 2.0 (Cat# [TT210002]).



Coomassie blue staining of purified SURF2 protein (Cat# [TP304095]). The protein was produced from HEK293T cells transfected with SURF2 cDNA clone (Cat# RC204095) using MegaTran 2.0 (Cat# [TT210002]).