

Product datasheet for RC204092

TIMMDC1 (NM_016589) Human Tagged ORF Clone

Product data:

Product Type:	Expression Plasmids
Product Name:	TIMMDC1 (NM_016589) Human Tagged ORF Clone
Tag:	Myc-DDK
Symbol:	TIMMDC1
Synonyms:	C3orf1; MC1DN31
Mammalian Cell Selection:	Neomycin
Vector:	pCMV6-Entry (PS100001)
E. coli Selection:	Kanamycin (25 ug/mL)
ORF Nucleotide Sequence:	>RC204092 ORF sequence Red=Cloning site Blue=ORF Green=Tags(s)

TTTTGTAATACGACTCACTATAGGGCGGCCGGAATTCGTCGACTGGATCCGGTACCGAGGAGATCTGCCGCCCGATCGCC

ATGGAGGTGCCGCCACCGCCACCGCGGAGCTTTCTGTAGAGCATTGTGCCTATTTCCCGAGTCTTTGCTGCCGAAGCTGTGACTGCCGATTCGGAAGTCCTTGAGGAGCGTCAGAAGCGGCTTCCCTACGTCCCAGAGCCCTATTACCCGGAATCTGGATGGGACCGCTCCGGGAGCTGTTGGCAAAGATGAACAGCAGAGAATTCAAAGGACCTTGCTAATCTGTAAGACGGCAGCTACAGCAGGCATCATTGGCTGGGTGTATGGGGGAAATACCAGCTTTTATTCATGCTAAACAACAATACATTGAGCAGAGCCAGGCAGAAATTTATCATAACCGGTTGATGCTGTGCAATCTGCACATCGTGCTGCCACACGAGGCTTCATTTCGTTATGGCTGGCGCTGGGGTTGAGAAGTGCAGTGTGTTGTGACTATATTCAACACAGTGAACACTAGTCTGAATGTATACCGAAATAAAGATGCCCTAAGCCATTTTGAATTCAGGAGCTGTACCGGGAAGTCTTTTTAGGATAAACGTAGGCCTGCGTGGCCTGGTGGCTGGTGGCATAATTGGAGCCTGTGGGCACTCCTGTAGGAGGCTGCTGATGGCATTTCAGAAGTACTCTGGTGGAGCTGTTTCAGGAAAGAAAACAGAAGGATCGAAAGGCACTCCATGAGCTAAAAGTGAAGTGGAAAGGCAGACTACAAGTTACTGAGCACCTCCCTGAGAAAATTGAAAGTAGTTTACAGGAAGATGAACCTGAGAATGATGCTAAGAAAATTGAAGCACTGCTAAACCTTCTAGAAACCTTCAGTAATAGATAACAAGACAAGGAC

ACGCGTACGCGGCCGCTCGAGCAGAAACTCATCTCAGAAGAGGATCTGGCAGCAAATGATATCCTGGATTACAAGGATGACGACGATAAGGTTTAA



[View online »](#)

Protein Sequence: >RC204092 protein sequence
Red=Cloning site Green=Tags(s)

MEVPPPAPRSFLCRALCLFPRVFAAEAVTADSEVLEERQKRLPYVPEPYPEESGWDRLRELFQKDEQQRI
 SKDLANICKTAATAGIIGWVYGGIPAFIHAKQQYIEQSQAIEIYHNRFDAVQSAHRAATRGFIRYGWRWGW
 RTAVFVTIFNTVNTSLNVYRNKDALSHFVIAGAVTGSLFRINVGLRGLVAGGIIGALLGTPVGGLLMAFQ
 KYSGETVQERKQKDRKALHELKLEEWKGRQLQVTEHLPEKIESSLQEDEPENDAKKIEALLNLPNPSVID
 KQDKD

TRTRPLEQKLISEEDLAANDILDYKDDDDKV

Chromatograms: https://cdn.origene.com/chromatograms/mk6430_c04.zip

Restriction Sites: SgfI-MluI

Cloning Scheme:



ACCN: NM_016589

ORF Size: 855 bp

OTI Disclaimer: The molecular sequence of this clone aligns with the gene accession number as a point of reference only. However, individual transcript sequences of the same gene can differ through naturally occurring variations (e.g. polymorphisms), each with its own valid existence. This clone is substantially in agreement with the reference, but a complete review of all prevailing variants is recommended prior to use. [More info](#)

OTI Annotation: This clone was engineered to express the complete ORF with an expression tag. Expression varies depending on the nature of the gene.

Components: The ORF clone is ion-exchange column purified and shipped in a 2D barcoded Matrix tube containing 10ug of transfection-ready, dried plasmid DNA (reconstitute with 100 ul of water).

Reconstitution Method:

1. Centrifuge at 5,000xg for 5min.
2. Carefully open the tube and add 100ul of sterile water to dissolve the DNA.
3. Close the tube and incubate for 10 minutes at room temperature.
4. Briefly vortex the tube and then do a quick spin (less than 5000xg) to concentrate the liquid at the bottom.
5. Store the suspended plasmid at -20°C. The DNA is stable for at least one year from date of shipping when stored at -20°C.

RefSeq: [NM_016589.4](#)

RefSeq Size: 1596 bp

RefSeq ORF: 858 bp

Locus ID: 51300

UniProt ID: [Q9NPL8](#)

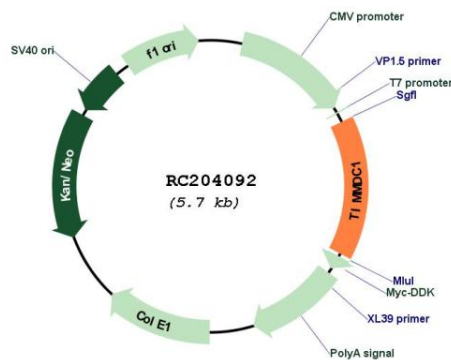
Cytogenetics: 3q13.33

Protein Families: Transmembrane

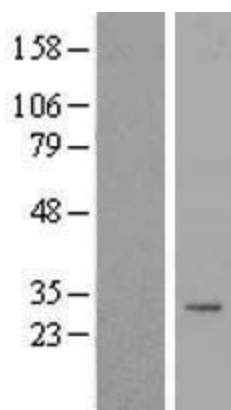
MW: 32.2 kDa

Gene Summary: Chaperone protein involved in the assembly of the mitochondrial NADH:ubiquinone oxidoreductase complex (complex I). Participates in constructing the membrane arm of complex I.[UniProtKB/Swiss-Prot Function]

Product images:



Circular map for RC204092



Western blot validation of overexpression lysate (Cat# [LY413839]) using anti-DDK antibody (Cat# [TA50011-100]). Left: Cell lysates from untransfected HEK293T cells; Right: Cell lysates from HEK293T cells transfected with RC204092 using transfection reagent MegaTran 2.0 (Cat# [TT210002]).