

## Product datasheet for **RC204088**

### **MAGED1 (NM\_001005333) Human Tagged ORF Clone**

#### **Product data:**

Product Type:	Expression Plasmids
Product Name:	MAGED1 (NM_001005333) Human Tagged ORF Clone
Tag:	Myc-DDK
Symbol:	MAGED1
Synonyms:	DLXIN-1; NRAGE
Mammalian Cell Selection:	Neomycin
Vector:	pCMV6-Entry (PS100001)
E. coli Selection:	Kanamycin (25 ug/mL)



[View online »](#)

**ORF Nucleotide Sequence:**

>RC204088 ORF sequence  
 Red=Cloning site Blue=ORF Green=Tags(s)

TTTTGTAATACGACTCACTATAGGGCGGCCGGAATTCGTCGACTGGATCCGGTACCGAGGAGATCTGCC  
 GCC**CGGATCGCC**

ATGGCTCAGAAAAATGGACTGTGGTGCGGCCCTCTCGGCTTCCAGAATCCTGACGCTTGTAGAGCAGTCT  
 GTCACCCCTCCCCAGCCTCCTGCCTCCACCCTCCCTCTTTCTGCATCCCCACTCTGTGCGACCCCC  
 TTATTCTCAACTCCGCGATCCGCTGCCGTCTGAGCTGCTACTGCACGCCTCTTGGAGCGTCCCCGGCT  
 CCTGCTGAGGCCTCCGTAGAAGACAGCGCCTTGCTTATGCAGACCTTGATGGAGGCCATCCAGATCTCAG  
 AGGCTCCACCTACTAACCAGGCCACCGCAGCTGCTAGTCCCAGAGTTACAGCCCCCAACTGCCAATGA  
 GATGGCTGACATTCAGGTTTCAGCAGCTGCCGCTAGGCCCTAAGTCAGCCTTTAAAGTCCAGAATGCCACC  
 ACAAAGGCCCAAATGGTGTCTATGATTTCTCTCAGGCTCATAATGCCAAGGATGTGCCAACACGCAGC  
 CCAAGGCAGCCTTAAGTCCCAAATGCTACCCCAAAGGGTCAAATGCTGCCTATGATTTTTCCAGGC  
 AGCAACCACTGGTGAGTTAGCTGCTAACAAGTCTGAGATGGCCTTCAAGGCCAGAAATGCCACTACTAAA  
 GTGGGCCCAAATGCCACCTACAATTTCTCTCAGTCTCTCAATGCCAATGACCTGGCCAACAGCAGGCCTA  
 AGACCCCTTTCAAGGCTTGAATGATACCACTAAGGCCCAACAGCTGATACCCAGACCCAGAATGTAAA  
 TCAGGCCAAAAATGGCCACTTCCCAGGCTGACATAGAGACCGACCCAGGTATCTCTGAACCTGACGGTGCA  
 ACTGCACAGACATCAGCAGATGGTTCCCAGGCTCAGAATCTGGAGTCCCGGACAAATAATTCGGGGCAAGA  
 GGACCCGCAAGATTAATAACTTGAATGTTGAAGAGAACAGCAGTGGGGATCAGAGGCGGGCCCCACTGGC  
 TGCAGGGACCTGGAGGTGTCACCAGTTCAGTGACCACTCAGAACCCACCTGGCGCACCCCAATGTG  
 CTCTGGCAGAGCCATTGGCTTGGCAGAACCCTCAGGCTGGCAAACCAGACAGCCAGGCAGACCCCAAC  
 CAGCACGTCAGAGCCCTCCAGCTAGGCAGACCCACAGCCTGGCAGAACCAGTCGCTTGGCAGAACC  
 AGTGATTTGGCCAAACCCAGTAATCTGGCAGAACCAGTATCTGGCCAAACCCATTGTCTGGCCCGGC  
 CCTGTTGTCTGGCCGAATCCACTGGCCTGGCAGAATCCACCTGGATGGCAGACTCCACCTGGATGGCAGA  
 CCCCACGGGCTGGCAGGCTCCTCCAGACTGGCAAGTCTCCTGACTGGCCGCTACCACCCGACTGGCC  
 ACTGCCACCTGATTGGCCACTTCCCAGTACTGGCCACTACCACCTGACTGGATCCCCGCTGATTGGCCA  
 ATTCCACCTGACTGGCAGAACCTGCGCCCTCGCCTAACCTGCGCCCTTCTCCAACTCGCGTGCCTCAC  
 AGAACCCAGGTGCTGCACAGCCCCGAGATGTGGCCCTTCTCAGGAAAGAGCAAATAAGTTGGTCAAGTA  
 CTTGATGCTTAAGGACTACACAAAGGTGCCATCAAGCGCTCAGAAATGCTGAGAGATATCATCCGTGAA  
 TACACTGATGTTATCCAGAAATCATTGAACGTGCATGCTTTGCTCCTAGAGAAGAAATTTGGGATCAAC  
 TGAAGAAATTGACAAAGAAGAACACCTGTATATTCTCATCAGTACCCCGAGTCCCTGGCTGGCATACT  
 GGGAACGACCAAAGACACACCCAAGCTCGGTCTCCTCTTGGTATTCTGGGTGCATCTTCATGAATGGC  
 AACCGTGCCAGTGAGGCTGTCCTCTGGGAGGCACTACGCAAGATGGGACTGCGTCTGGGGTGAGACATC  
 CCCTCCTTGGAGATCTAAGGAACTTCTCACCTATGAGTTTGAAGCAGAAATACCTGGACTACAGACG  
 AGTGCCCAACAGCAACCCCGGAGTATGAGTTCTCTGGGGCTCCGTTCTACCATGAGACTAGCAAG  
 ATGAAAGTGTGAGATTCATTGCAGAGGTTAGAAAAGAGACCCTCGTACTGGACTGCACAGTTCATGG  
 AGGCTGCAGATGAGGCCCTGGATGCTCTGGATGCTGCTGCAGCTGAGGCCGAAGCCCGGGCTGAAGCAAG  
 AACCCGCATGGGAATTGGAGATGAGGCTGTGCTGGGCCCTGGAGCTGGGATGACATTGAGTTTGAGCTG  
 CTGACCTGGGATGAGGAAGGAGATTTTGGAGATCCCTGGTCCAGAATTCATTTACCTTCTGGGCCAGAT  
 ACCACCAGAATGCCCGCTCCAGATTCCTCAGACCTTTGCCGGTCCCATTATTGGTCTGTGGTACAGC  
 CAGTGCCAACTTCGCTGCCAACTTTGGTCCATTGGTTTCTTCTGGGTTGAG

**ACGCGT**ACGCGGCCGCTCGAGCAGAACTCATCTCAGAAGAGGATCTGGCAGCAAATGATATCCTGGATT  
 ACAAGGATGACGACGATAAGGTTTAA

**Protein Sequence:** >RC204088 protein sequence  
Red=Cloning site Green=Tags(s)

MAQKMDCGAGLLGFQNPDACRAVCHPLPQPPASTLPLSAFPTLCDPPYSQLRDPPAVLSCYCTPLGASPA  
PAEASVEDSALLMQTLMEAIQISEAPPTNQATAAASPQSSQPPTANEMADIQVSAARPKSAFKVQAT  
TKGPNGVYDFSQAHNAKDVNTQPKAAFKSQNATPKGPNAAYDFQAATTGELAANKSEMAFKAQNATTK  
VGP NATYNFSQLNANDLANSRPKTPFKAWNDTTKAPTADTQTQNVNQAKMATSQADIETDPGISEPDGA  
TAQTSADGSQAQNLERSIIIRGKRTRKINNLNVEENSSGDQRRAPLAAGTWRSAPVPTTQNP PGAPPNV  
LWQTPLAWQNP SGWQNQTARQTTPARQSPPARQTPPAWQNPVAVQNPVIWPNPVIWQNPVIWPNPVIWPG  
PVVWPNPLAWQNP PGWQTPPGWQTPPGWQGPDPWPLPPDWPLPPDWPLPTDWPLPPDWIPADWP  
IPPDWQNL RPSNLRPSNRSRASNPGAAQPRDVALLQERANKLVKYLMLKDYTKVPIKRSEMLRDIIRE  
YTDVYPEI IERACFVLEKKFGIQLKEIDKEEHL YILISTPESLAGILGTTKDTPKLGLLLVILGVIFMNG  
NRASEAVLWEALRKMGLRPGVRHPLLGDRLKLLTYEFVKQKYLDRRVPNSNPPEYEF LWLRSYHETSK  
MKVLRFIAEVQKRDPDWT AQFMEAADEALDALAAAAEAEARAEARTRMGIGDEAVSGPWSWDDIEFEL  
LTWDEEGDFGDPWSRIPFTFWARYHQNARSFPQTFAGPIIGPGGTASANFAANFGAIGFFWVE

TRTRPLEQKLI SEEDLAANDILDYKDDDDKV

**Chromatograms:** [https://cdn.origene.com/chromatograms/mk6751\\_c08.zip](https://cdn.origene.com/chromatograms/mk6751_c08.zip)

**Restriction Sites:** Sgfl-Mlul

**Cloning Scheme:**


**ACCN:** NM\_001005333

**ORF Size:** 2502 bp

**OTI Disclaimer:** The molecular sequence of this clone aligns with the gene accession number as a point of reference only. However, individual transcript sequences of the same gene can differ through naturally occurring variations (e.g. polymorphisms), each with its own valid existence. This clone is substantially in agreement with the reference, but a complete review of all prevailing variants is recommended prior to use. [More info](#)

**OTI Annotation:** This clone was engineered to express the complete ORF with an expression tag. Expression varies depending on the nature of the gene.

**Components:** The ORF clone is ion-exchange column purified and shipped in a 2D barcoded Matrix tube containing 10ug of transfection-ready, dried plasmid DNA (reconstitute with 100 ul of water).

**Reconstitution Method:**

1. Centrifuge at 5,000xg for 5min.
2. Carefully open the tube and add 100ul of sterile water to dissolve the DNA.
3. Close the tube and incubate for 10 minutes at room temperature.
4. Briefly vortex the tube and then do a quick spin (less than 5000xg) to concentrate the liquid at the bottom.
5. Store the suspended plasmid at -20°C. The DNA is stable for at least one year from date of shipping when stored at -20°C.

**RefSeq:** [NM\\_001005333.2](#)

**RefSeq Size:** 2928 bp

**RefSeq ORF:** 2505 bp

**Locus ID:** 9500

**UniProt ID:** [Q9Y5V3](#)

**Cytogenetics:** Xp11.22

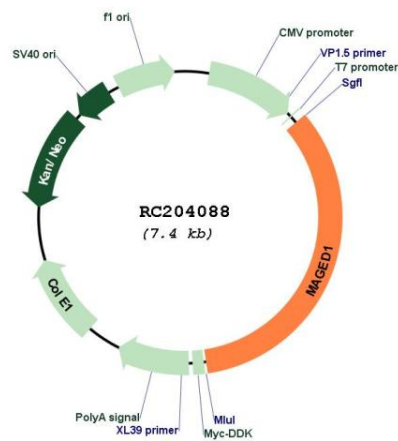
**Protein Families:** Druggable Genome

**Protein Pathways:** Neurotrophin signaling pathway

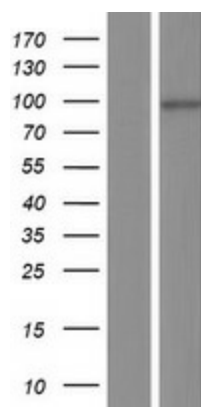
**MW:** 92 kDa

**Gene Summary:** This gene is a member of the melanoma antigen gene (MAGE) family. Most of the genes of this family encode tumor specific antigens that are not expressed in normal adult tissues except testis. Although the protein encoded by this gene shares strong homology with members of the MAGE family, it is expressed in almost all normal adult tissues. This gene has been demonstrated to be involved in the p75 neurotrophin receptor mediated programmed cell death pathway. Three transcript variants encoding two different isoforms have been found for this gene. [provided by RefSeq, Jul 2008]

### Product images:



Circular map for RC204088



Western blot validation of overexpression lysate (Cat# [LY423859]) using anti-DDK antibody (Cat# [TA50011-100]). Left: Cell lysates from untransfected HEK293T cells; Right: Cell lysates from HEK293T cells transfected with RC204088 using transfection reagent MegaTran 2.0 (Cat# [TT210002]).