

Product datasheet for **RC204086**

GNB1L (NM_053004) Human Tagged ORF Clone

Product data:

Product Type: Expression Plasmids
Product Name: GNB1L (NM_053004) Human Tagged ORF Clone
Tag: Myc-DDK
Symbol: GNB1L
Synonyms: DGCRK3; FKSG1; GY2; WDR14; WDVCF
Mammalian Cell Selection: Neomycin
Vector: pCMV6-Entry (PS100001)
E. coli Selection: Kanamycin (25 ug/mL)
ORF Nucleotide Sequence: >RC204086 representing NM_053004
 Red=Cloning site Blue=ORF Green=Tags(s)

TTTTGTAATACGACTCACTATAGGGCGCCGGGAATTCGTCGACTGGATCCGGTACCGAGGAGATCTGCC
 GCC**CGATCGCC**

ATGACGGCCCCCTGCCCGCCACCTCCAGACCCCCAGTTTGTCTCCGAGGCACCCAGTCACCGGTGC
 ATGCGTGCACCTTCTGCGAAGGAGCCCAGGCTCAGGGGCGCCGCTCCTTCTCAGGGTCTCAGAGTGG
 CCTGGTACACATCTGGAGCCTGCAGACGCGGAGAGCGTTACCACCCTGGATGGCCACGGCGCCAGTGT
 GTGACCTGGCTGCAGACGCTGCCCCAGGGGCGCCAGCTCCTCAGTCAGGGCCGGGACCTGAAGCTGTGCC
 TGTGGGACCTCGCGGAGGGCAGGAGCGCTGTCGTGGACTCCGTGTGCTTGGAGAGTGTGGGCTTCTGCCG
 GAGCAGCATCCTGGCCGGGGGCCAGCCACGCTGGACGCTTGGCCGTGCCAGGGAGGGGCAGCGACGAGGTT
 CAGATTCTGGAGATGCCCTCCAAGACGTCAAGTGTGCGCCCTGAAGCCGAAGGCAGATGCCAAGCTGGGCA
 TGCCCATGTGCCTGCGGCTGTGGCAGGCCGACTGCAGCTCCCGCCACTCCTTCTGGCCGGCTATGAGGA
 TGGATCGGTGGTCTGTGGGACGTCTCTGAGCAGAAGGTGTGCAGCCGCATCGCCTGCCATGAGGAGCCC
 GTCATGGACCTTGACTTTGACTCCCAGAAGGCCAGGGGCATCTCAGGCTCCGCGGGGAAGGGCTGGCTG
 TCTGGAGCCTGGACTGGCAGCAGGCCCTGCAGGTGCGTGGGACTCATGAACTCACCAATCCCGGGATCGC
 CGAGGTACGATCCGGCCAGATCGAAGATCCTGGCCACCGCAGGCTGGGACCACCGCATCCGCGTGTTC
 CACTGGCGGACGATGCAGCCACTGGCCGTGCTGGCCTTCCACAGCGCCGCTGTCCAGTGCCTGGCCTTCA
 CCGCCGATGGCTTGTCTGGCCGCGGGCTCCAAGGATCAGCGGATCAGCCTCTGGTCACTCTACCCACGCGC
 A

ACGCGTACGCGGCCGCTCGAGCAGAACTCATCTCAGAAGAGGATCTGGCAGCAAATGATATCCTGGATT
 ACAAGGATGACGACGATAAGGTTTAA



[View online »](#)

Reconstitution Method:

1. Centrifuge at 5,000xg for 5min.
2. Carefully open the tube and add 100ul of sterile water to dissolve the DNA.
3. Close the tube and incubate for 10 minutes at room temperature.
4. Briefly vortex the tube and then do a quick spin (less than 5000xg) to concentrate the liquid at the bottom.
5. Store the suspended plasmid at -20°C. The DNA is stable for at least one year from date of shipping when stored at -20°C.

RefSeq: [NM_053004.3](#)

RefSeq Size: 1537 bp

RefSeq ORF: 984 bp

Locus ID: 54584

UniProt ID: [Q9BYB4](#)

Cytogenetics: 22q11.21

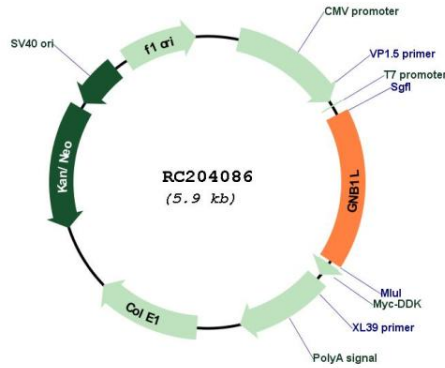
Domains: WD40

Protein Families: Druggable Genome

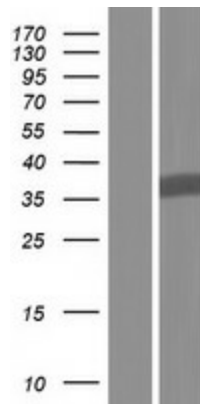
MW: 35.4 kDa

Gene Summary: This gene encodes a G-protein beta-subunit-like polypeptide which is a member of the WD repeat protein family. WD repeats are minimally conserved regions of approximately 40 amino acids typically bracketed by gly-his and trp-asp (GH-WD), which may facilitate formation of heterotrimeric or multiprotein complexes. Members of this family are involved in a variety of cellular processes, including cell cycle progression, signal transduction, apoptosis, and gene regulation. This protein contains 6 WD repeats and is highly expressed in the heart. The gene maps to the region on chromosome 22q11, which is deleted in DiGeorge syndrome, trisomic in derivative 22 syndrome and tetrasomic in cat-eye syndrome. Therefore, this gene may contribute to the etiology of those disorders. Transcripts from this gene share exons with some transcripts from the C22orf29 gene. [provided by RefSeq, Jul 2008]

Product images:



Circular map for RC204086



Western blot validation of overexpression lysate (Cat# [LY409356]) using anti-DDK antibody (Cat# [TA50011-100]). Left: Cell lysates from untransfected HEK293T cells; Right: Cell lysates from HEK293T cells transfected with RC204086 using transfection reagent MegaTran 2.0 (Cat# [TT210002]).