

## Product datasheet for **RC204083**

### SMOC1 (NM\_001034852) Human Tagged ORF Clone

#### Product data:

Product Type:	Expression Plasmids
Product Name:	SMOC1 (NM_001034852) Human Tagged ORF Clone
Tag:	Myc-DDK
Symbol:	SMOC1
Synonyms:	OAS
Mammalian Cell Selection:	Neomycin
Vector:	pCMV6-Entry (PS100001)
E. coli Selection:	Kanamycin (25 ug/mL)



[View online »](#)

**ORF Nucleotide Sequence:**

>RC204083 ORF sequence  
 Red=Cloning site Blue=ORF Green=Tags(s)

TTTTGTAATACGACTCACTATAGGGCGGCCGGAATTCGTCGACTGGATCCGGTACCGAGGAGATCTGCC  
 GCC**CGGATCGCC**

ATGCTGCCCGCGCTGCGCCCGCTGCTCAGCCCCACTTGCTGCTGGTGTGGTGCAGCTGTCCCTG  
 CTGCGGGCCACCCACACAGGCCCCAGGTTTCTAATAAGTGACCGTGACCCACAGTGCAACCTCCACTG  
 CTCAGGACTCAACCCAAACCATCTGTGCCTCTGATGGCAGGTCTACGAGTCCATGTGTGAGTACCAG  
 CGAGCCAAGTGCCGAGACCCGACCTGGGCGTGGTGCATCGAGGTAGATGCAAAGATGCTGGCCAGAGCA  
 AGTGTGCGCTGGAGCGGGCTCAAGCCCTGGAGCAAGCCAAGAAGCCTCAGGAAGCTGTGTTTGTCCAGA  
 GTGTGGCAGGATGGCTCCTTTACCCAGGTGCAGTGCCATACTTACACTGGTACTGCTGGTGTGCACC  
 CCGGATGGGAAGCCCATCAGTGGCTCTTCTGTGCAGAATAAACTCCTGTATGTTCAAGTTCAGTACCCG  
 ACAAGCCCTTGAGCCAGGTAACCTCAGGAAGGAAAGATGACGGGTCTAAGCCGACACCCACGATGGAGAC  
 CCAGCCGGTGTTCGATGGAGATGAAATCACAGCCCAACTCTATGGATTAACACTTGGTGTCAAGGAC  
 TCCAAACTGAACAACACCAACATAAGAAATTCAGAGAAAGTCTATTCGTGTGACCAAGGAGAGGCAGAGTG  
 CCCTGGAAGAGGCCAGCAGAATCCCGTGAGGGTATTGTCATCCCTGAATGTGCCCTGGGGACTCTA  
 TAAGCCAGTGCAATGCCACCACTGACTGGCTACTGCTGGTGTGTGCTGGTGGACACAGGGCGCCCGCTG  
 CCTGGGACCTCCACACGCTACGTGATGCCAGTTGTGAGAGCGACGCCAGGGCCAAGACTACAGAGGCGG  
 ATGACCCCTTCAAGGACAGGGAGCTACCAGGCTGTCCAGAAGGGAAGAAAATGGAGTTTATCACCAGCCT  
 ACTGGATGCTCTCACCCTGACATGGTTTCAAGCCATTAACCTCAGCAGCGCCACTGGAGGTGGGAGGTTT  
 TCAGAGCCAGACCCAGCCACACCCTGGAGGAGCGGGTAGTGCAGTGGTATTTTCAAGCAGCTGGACAGCA  
 ATAGCAGCAACGACATTAACAAGCGGGAGATGAAGCCCTTCAAGCGCTACGTGAAGAAGAAGCCAAGCC  
 CAAGAAATGTGCCCGCGCTTTCACCGACTACTGTGACCTGAACAAAGACAAGGTCAATTTCACTGCCTGAG  
 CTGAAGGCTGCCTGGGTGTAGCAAAGAAGTAGGACGCCTCGTC

**ACGCGT**ACGCGGCCGCTCGAGCAGAACTCATCTCAGAAGAGGATCTGGCAGCAATGATATCCTGGATT  
 ACAAGGATGACGACGATAAGGTTTAA

**Protein Sequence:**

>RC204083 protein sequence  
 Red=Cloning site Green=Tags(s)

MLPARCARLLTPHLLLVLVQLSPARGHRTTGPRFLISDRDPQCNLHCSRTQPKPICASDGRSYESMCEYQ  
 RAKCRDPTLGVVHRGRCKDAGQSKRLERAQALEQAKKPQEAQVPECGEDGSFTQVQCHTYTGYCWCVT  
 PDGKPI SGSSVQNKTPVCSGSVTDKPLSQGNSGRKDDGSKPTPTMETQPVFDGDEITAPTLWIKHLVIKD  
 SKLNNTNIRNSEKVYSCDQERQSALEEAQNPREGIVIPCAPGGLYKPVQCHQSTGYCWCVLVDTGRPL  
 PGTSTRYVMPSCESDARAKTTEADDPFKDRELPGCPEGKKMEFITSLLDALTTDMVQAINSAAPTGGGRF  
 SEPDPSTLEERVVHWYFSQLDSNSNDINKREMKPFKRYVKKKAKPKKARRFTDYCDLNKDKVISLPE  
 LKGLGVSKEVGRLV

**TR**TRPLEQKLISEEDLAANDILDYKDDDDKV

**Chromatograms:**

[https://cdn.origene.com/chromatograms/mk6174\\_c05.zip](https://cdn.origene.com/chromatograms/mk6174_c05.zip)

**Restriction Sites:**

SgfI-MluI

**Cloning Scheme:**


**ACCN:** NM\_001034852

**ORF Size:** 1305 bp

**OTI Disclaimer:** The molecular sequence of this clone aligns with the gene accession number as a point of reference only. However, individual transcript sequences of the same gene can differ through naturally occurring variations (e.g. polymorphisms), each with its own valid existence. This clone is substantially in agreement with the reference, but a complete review of all prevailing variants is recommended prior to use. [More info](#)

**OTI Annotation:** This clone was engineered to express the complete ORF with an expression tag. Expression varies depending on the nature of the gene.

**Components:** The ORF clone is ion-exchange column purified and shipped in a 2D barcoded Matrix tube containing 10ug of transfection-ready, dried plasmid DNA (reconstitute with 100 ul of water).

**Reconstitution Method:**

1. Centrifuge at 5,000xg for 5min.
2. Carefully open the tube and add 100ul of sterile water to dissolve the DNA.
3. Close the tube and incubate for 10 minutes at room temperature.
4. Briefly vortex the tube and then do a quick spin (less than 5000xg) to concentrate the liquid at the bottom.
5. Store the suspended plasmid at -20°C. The DNA is stable for at least one year from date of shipping when stored at -20°C.

**RefSeq:** [NM\\_001034852.3](#)

**RefSeq Size:** 3716 bp

**RefSeq ORF:** 1308 bp

**Locus ID:** 64093

**UniProt ID:** [Q9H4F8](#)

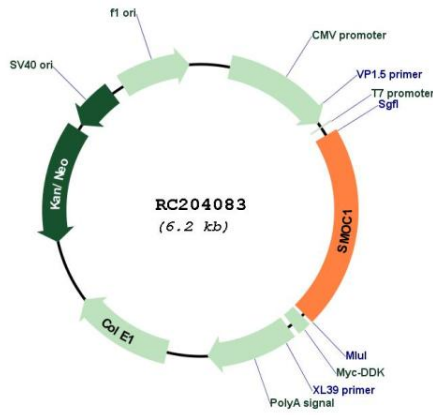
**Cytogenetics:** 14q24.2

**Protein Families:** Secreted Protein

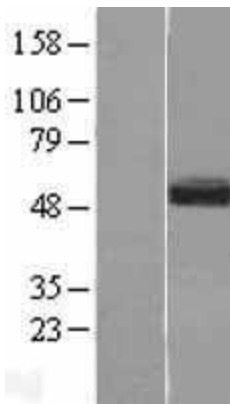
**MW:** 48.3 kDa

**Gene Summary:** This gene encodes a multi-domain secreted protein that may have a critical role in ocular and limb development. Mutations in this gene are associated with microphthalmia and limb anomalies. Alternatively spliced transcript variants encoding different isoforms have been found for this gene. [provided by RefSeq, Mar 2011]

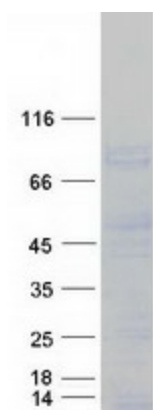
**Product images:**



Circular map for RC204083



Western blot validation of overexpression lysate (Cat# [LY400412]) using anti-DDK antibody (Cat# [TA50011-100]). Left: Cell lysates from untransfected HEK293T cells; Right: Cell lysates from HEK293T cells transfected with RC204083 using transfection reagent MegaTran 2.0 (Cat# [TT210002]).



Coomassie blue staining of purified SMOC1 protein (Cat# [TP304083]). The protein was produced from HEK293T cells transfected with SMOC1 cDNA clone (Cat# RC204083) using MegaTran 2.0 (Cat# [TT210002]).