

Product datasheet for RC204082

TAZ (WWTR1) (NM_015472) Human Tagged ORF Clone

Product data:

Product Type:	Expression Plasmids
Product Name:	TAZ (WWTR1) (NM_015472) Human Tagged ORF Clone
Tag:	Myc-DDK
Symbol:	TAZ
Synonyms:	TAZ
Mammalian Cell Selection:	Neomycin
Vector:	pCMV6-Entry (PS100001)
E. coli Selection:	Kanamycin (25 ug/mL)
ORF Nucleotide Sequence:	>RC204082 ORF sequence Red=Cloning site Blue=ORF Green=Tags(s)

TTTTGTAATACGACTCACTATAGGGCGCCGGGAATTCGTCGACTGGATCCGGTACCGAGGAGATCTGCC
GCC**CGATCGCC**

ATGAATCCGGCCTCGGCGCCCCCTCCGCTCCCGCCGCTGGGCAGCAAGTGATCCACGTACGCAGGACC
TAGACACAGACCTCGAAGCCCTTTCAACTCTGTCATGAATCCGAAGCCTAGCTCGTGGCGGAAGAAGAT
CCTGCCGAGTCTTTCTTAAGGAGCCTGATTCGGGCTCGCACTCGGCCAGTCCAGCACCGACTCGTCCG
GGCGGCCACCCGGGGCCTCGACTGGCTGGGGGTGCCAGCATGTCGGCTCGCACTCGTCCGCCGCTCCC
TGCAGCTGGGCACCGGCGGGTCTGCGGGTAGCCCCGCGCAGCAGCACGCGCACCTCCGCCAGCAGTC
CTACGAGTGACCGACGAGCTGCCACTGCCCCCGGGCTGGGAGATGACCTTCACGGCCACTGGCCAGAGG
TACTTCTCAATCACATAGAAAAATCACACATGGCAAGACCCTAGGAAGGCGATGAATCAGCCTCTGA
ATCATATGAACCTCCACCTGCCGTGAGTTCACACCAAGTGCCTCAGAGGTCCATGGCAGTATCCCAGCC
AAATCTCGTGATGAATCACCAACACCAGCAGCAGATGGCCCCAGTACCCTGAGCCAGCAGAACCACCCC
ACTCAGAACCCACCCGAGGGCTCATGAGTATGCCCAATGCGCTGACCACTCAGCAGCAGCAGCAGAGA
AACTGCGGCTTCAGAGAATCCAGATGGAGAGAGAAAGGATTGCAATGCGCAAGAGGAGCTCATGAGGCA
GGAAGCTGCCCTCTGTCGACAGCTCCCCATGGAAGCTGAGACTCTTCCCCAGTTCAGGCTGTCTCAAC
CCACCCACGATGACCCAGACATGAGATCCATCACTAATAATAGCTCAGATCCTTTCCTCAATGGAGGGC
CATATCATTGAGGGAGCAGAGCACTGACAGTGGCCTGGGGTTAGGGTGCTACAGTGTCCCAACTCC
GGAGGACTTCTCAGCAATGTGGATGAGATGGATACAGGAGAAAAACGAGGACAAACACCCATGAACATC
AATCCCCAACAGACCCGTTTCCCTGATTTCTTGACTGTCTTCCAGGAACAAACGTTGACTTAGGAACCT
TGAATCTGAAGACCTGATCCCCCTTCAATGATGTAGAGTCTGCTCTGAACAAAAGTGAGCCCTTTCT
AACCTGGCTG

ACGCGTACGCGGCGGCTCGAGCAGAAACTCATCTCAGAAGAGGATCTGGCAGCAAATGATATCCTGGATT
ACAAGGATGACGACGATAAGGTTTAA



[View online »](#)

Reconstitution Method:

1. Centrifuge at 5,000xg for 5min.
2. Carefully open the tube and add 100ul of sterile water to dissolve the DNA.
3. Close the tube and incubate for 10 minutes at room temperature.
4. Briefly vortex the tube and then do a quick spin (less than 5000xg) to concentrate the liquid at the bottom.
5. Store the suspended plasmid at -20°C. The DNA is stable for at least one year from date of shipping when stored at -20°C.

Note: Plasmids are not sterile. For experiments where strict sterility is required, filtration with 0.22um filter is required.

RefSeq: [NM_015472.6](#)

RefSeq Size: 5135 bp

RefSeq ORF: 1203 bp

Locus ID: 25937

UniProt ID: [Q9GZV5](#)

Cytogenetics: 3q25.1

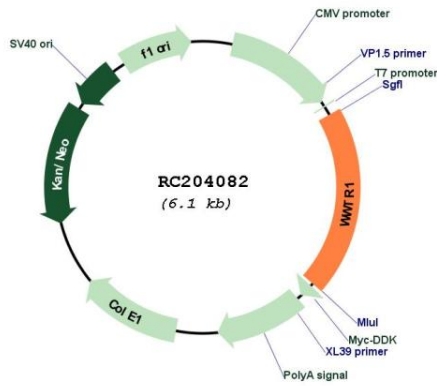
Domains: WW

Protein Families: Druggable Genome, Transcription Factors

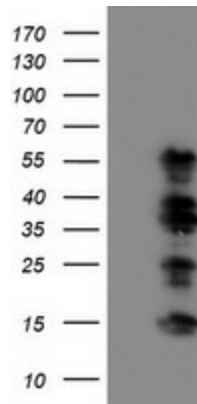
MW: 44.1 kDa

Gene Summary: Transcriptional coactivator which acts as a downstream regulatory target in the Hippo signaling pathway that plays a pivotal role in organ size control and tumor suppression by restricting proliferation and promoting apoptosis. The core of this pathway is composed of a kinase cascade wherein STK3/MST2 and STK4/MST1, in complex with its regulatory protein SAV1, phosphorylates and activates LATS1/2 in complex with its regulatory protein MOB1, which in turn phosphorylates and inactivates YAP1 oncoprotein and WWTR1/TAZ. WWTR1 enhances PAX8 and NKX2-1/TTF1-dependent gene activation. Regulates the nuclear accumulation of SMADS and has a key role in coupling them to the transcriptional machinery such as the mediator complex. Regulates embryonic stem-cell self-renewal, promotes cell proliferation and epithelial-mesenchymal transition.[UniProtKB/Swiss-Prot Function]

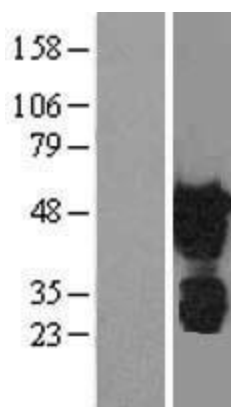
Product images:



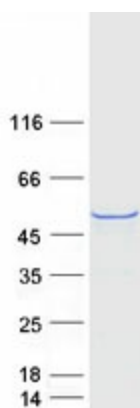
Circular map for RC204082



HEK293T cells were transfected with the pCMV6-ENTRY control (Cat# [PS100001], Left lane) or pCMV6-ENTRY WWTR1 (Cat# RC204082, Right lane) cDNA for 48 hrs and lysed. Equivalent amounts of cell lysates (5 ug per lane) were separated by SDS-PAGE and immunoblotted with anti-WWTR1(Cat# [TA503538]). Positive lysates [LY414524] (100ug) and [LC414524] (20ug) can be purchased separately from OriGene.



Western blot validation of overexpression lysate (Cat# [LY414524]) using anti-DDK antibody (Cat# [TA50011-100]). Left: Cell lysates from untransfected HEK293T cells; Right: Cell lysates from HEK293T cells transfected with RC204082 using transfection reagent MegaTran 2.0 (Cat# [TT210002]).



Coomassie blue staining of purified WWTR1 protein (Cat# [TP304082]). The protein was produced from HEK293T cells transfected with WWTR1 cDNA clone (Cat# RC204082) using MegaTran 2.0 (Cat# [TT210002]).